

**Tender  
for  
INTERIOR WORKS – EMPLOYEE WORKSTATIONS**

Tender No: CDACH/PUR/26/Interior-HWP  
Date: May 14, 2026



इलेक्ट्रॉनिकी और सूचना प्रौद्योगिकी मंत्रालय  
की वैज्ञानिक संस्था, भारत सरकार  
A Scientific Society of Ministry of  
Electronics and Information Technology  
Government of India

Plot No 6&7, Hardware Park, Sy No. 1/1, Srisailam Highway,  
Pahadi Shareef via, Keshavgiri (Post), Hyderabad - 501510.

[www.cdac.in](http://www.cdac.in)

**C-DAC invites ONLINE bids for Interior Works -Setting Up of Employee Workstation at Hardware Park Campus.**

Prospective Bidders may download the Tender Document from [www.cdac.in](http://www.cdac.in) / <https://eprocure.gov.in/eprocure/app>. Bidders are advised to go through instructions provided at 'Instructions for online Bid Submission' and submit duly filled bids online on the website <https://eprocure.gov.in/eprocure/app> as per the schedule given in the Tender Document; along with a Tender document fee of Rs. 2,360/- (non-refundable) payable through NEFT to CDAC, Hyderabad and EMD of Rs 2,55,000/- through NEFT/FDR/Bank Guarantee in favour of **CENTRE FOR DEVELOPMENT OF ADVANCED COMPUTING, HYDERABAD.**

**Tender Fee and EMD in the form of DD/CASH will not be accepted.**

**TENDER SCHEDULE**  
**Tender No: CDACH/PUR/26/INTERIOR-HWP**

Name of the Institute	Centre for Development of Advanced Computing, Hyderabad
Work Site	Centre for Development of Advanced Computing, Plot No. 6 and 7, Hardware Park, Srisailam Highway, Hyderabad - 501510
Date of Release of Tender	May 14, 2026
Pre-Bid Meeting	May 22, 2026 at 11.00 AM
Pre Bid Meeting Place	Centre for Development of Advanced Computing, Plot No. 6 & 7, Hardware Park, Srisailam Highway, Hyderabad
Last date of submission of bids	June 04, 2026 @ 15:00 Hrs
Date of opening of Technical bids	June 05, 2026 @ 16:00 Hrs
Place of opening of technical bids	C-DAC, Hyderabad (Hardware Park campus).
Estimate Value of the Works	85 Lakhs

- **Bank Details for payments through NEFT are mentioned in Annexure**

## **INSTRUCTION FOR ONLINE BID SUBMISSION:**

The bidders are required to submit soft copies of their bids electronically through the CENTRAL PUBLIC PROCUREMENT PORTAL ([www.eprocure.gov.in](http://www.eprocure.gov.in)), using valid Digital Signature Certificates. The instructions given below are meant to assist the bidders in registering on the CPP Portal, prepare their bids in accordance with the requirements and submitting their bids online on the CPP Portal. More information useful for submitting online bids on the CPP Portal may be obtained at: <https://eprocure.gov.in/eprocure/app>.

### **REGISTRATION:**

- Bidders are required to enrol on the e-Procurement module of the Central Public Procurement Portal (url: <https://eprocure.gov.in/eprocure/app>) by clicking on the link 'Click here to Enrol'.

Enrolment on the CPP Portal is free of charge.

- As part of the enrolment process, the bidders will be required to choose a unique username and assign a password for their accounts.
- Bidders are advised to register their valid email address and mobile numbers as part of the registration process. These would be used for any communication from the CPP Portal.
- Upon enrolment, the bidders will be required to register their valid Digital Signature Certificate (Class II or Class III Certificates with signing key usage) issued by any Certifying Authority recognized by CCA India with their profile.
- Only one valid DSC should be registered by a bidder. Please note that the bidders are responsible to ensure that they do not lend their DSCs to others, which may lead to misuse.
- Bidder then logs into the site through the secured login by entering their userID / password and the password of the DSC / eToken.
- There are various search options built in the CPP Portal, to facilitate bidders to search active tenders by several parameters. These parameters could include Tender ID, organization name, location, date, value, etc. There is also an option of advanced search for tenders, wherein the bidders may combine a number of search parameters such as organization name, form of contract, location, date, other keywords etc. to search for a tender published on the CPP Portal.
- Once the bidders have selected the tenders they are interested in, they may download the required documents / tender schedules. These tenders can be moved to the respective 'My Tenders' folder.

This would enable the CPP Portal to intimate the bidders through SMS / E-mail in case there is any corrigendum issued to the tender document.

- The bidder should make a note of the unique Tender ID assigned to each tender, in case they want to obtain any clarification / help from the Helpdesk.
- Bidder should take into account any corrigendum published on the tender document before submitting their bids.
- Please go through the tender advertisement and the tender document carefully to understand the documents required to be submitted as part of the bid. Please note the number of covers in which the bid documents have to be submitted, the number of documents – including the names and content of each of the document that need to be submitted. Any deviations from these may lead to rejection of the bid.
- Bidder, in advance, should get ready the bid documents to be submitted as indicated in the tender document / schedule and generally, they can be in PDF / XLS / RAR / DWF formats. Bid documents may be scanned with 100dpi with black and white option.
- To avoid the time and effort required in uploading the same set of standard documents which are required to be submitted as a part of every bid, a provision of uploading such standard

documents (e.g. PAN card copy, annual reports, auditor certificates etc.) has been provided to the bidders. Bidders can use 'My Space' area available to them to upload such documents. These documents

may be directly submitted from the 'My Space' area while submitting a bid, and need not be uploaded repeatedly. This will lead to a reduction in the time required for bid submission process.

- Bidder should log into the site well in advance for bid submission so that he/she upload the bid in time i.e. on or before the bid submission time. Bidder will be responsible for any delay due to other issues.
  - The bidder has to digitally sign and upload the required bid documents one by one as indicated in the tender document.
  - Bidder has to select the payment option as 'offline' to pay the tender fee / EMD as applicable and enter details of the instrument(s).
  - Financial bids to be submitted in PDF format.
  - The server time (which is displayed on the bidders' dashboard) will be considered as the standard time for referencing the deadlines for submission of the bids by the bidders, opening of bids etc. The bidders should follow this time during bid submission,
  - All the documents being submitted by the bidders would be encrypted using PKI encryption techniques to ensure the secrecy of the data. The data entered cannot be viewed by unauthorized persons until the time of bid opening. The confidentiality of the bids is maintained using the secured Socket Layer 128 bid encryption technology. Data storage encryption of sensitive fields is done.
  - The uploaded tender documents become readable only after the tender opening by the authorized bid openers.
  - Upon the successful and timely submission of bids, the portal will give a successful bid submission message and a bid summary will be displayed with the bid no. and the date & time of submission of the bid with all other relevant details.
1. Any queries relating to the tender document and the terms and conditions contained therein should be addressed to the Tender Inviting Authority for a tender or the relevant contact person indicated in the Tender.

Any queries relating to the process of online bid submission or queries relating to CPP Portal in general may be directed to the 24\*7 CPP Portal Helpdesk. The contact number for the helpdesk are 0120-4200 462, 0120-4001 002, 0120-4001 005, 0120-6277 787,

e-mail for Technical - support-eproc@nic.in.

- The tenders will be received online through portal <https://eprocure.gov.in/eprocure/app>. In the Technical Bids, the bidders are required to upload all the documents in .pdf format.
- Possession of Valid Class II/III Digital Signature Certificate (DSC) in the form of smart card/ e-Token in the company's name is a prerequisite for registration and participating in the bid submission activities through <https://eprocure.gov.in/eprocure/app>. Digital Signature Certificates can be obtained from the authorized certifying agencies, details of which are available in the web site <https://eprocure.gov.in/eprocure/app> under the link 'Information about DSC'.

Tenderers are advised to follow the instructions provided in the 'Instructions to the Tenderers for the e-Submission of the bids online through the Central Public Procurement Portal for e-Procurement at <https://eprocure.gov.in/eprocure/app>.

## SECTION I: INVITATION FOR BIDS (IFB)

### 1. Introduction:

Centre for Development of Advanced Computing (C-DAC) is a Scientific Society of the Ministry of Electronics & Information Technology (MeitY), Government of India. It is proposed to Set-Up Employee Workstations in 2<sup>nd</sup> Floor of Hostel Building at

**Centre for Development of Advanced Computing  
Plot No. 6 and 7, Hardware Park,  
Srisaillam Highway, Hyderabad – 501510.**

For the proposed works, C-DAC invites online bids through Central Public Procurement Portal (<https://eprocure.gov.in/>) in **two bid system** from approved, eligible and reputed contractors/firms registered with CPWD, PWD, MES, PSUs, BSNL, Railways and Telangana State PWD (R&B) and State government's Organizations, dealing with Interior works (Partitions, Workstations, False-roofing, Electrical, Fire Safety, Furniture) for the following composite works of the C-DAC:

Prospective Bidders may download the Tender Document from [www.cdac.in](http://www.cdac.in) / <https://eprocure.gov.in/eprocure/app> . Bidders are advised to go through instructions provided at 'Instructions for online Bid Submission' and submit duly filled bids online on the website <https://eprocure.gov.in/eprocure/app> as per the schedule given in the Tender Document.

S. No.	Name of Work	Earnest Money (In lacs)	Last Date of Submission of Tender	Date of Opening of Technical Bid
1	<b>Interior Works -Setting Up of Employee Workstation at Hardware Park Campus as per the Layout Drawings and BOQ provided in Scope of Work</b>	2.55 lakhs	<b>04.06.2026 15.00 Hrs</b>	<b>05.06.2026 16.00 Hrs</b>

**The time of completion of work is 45 (Forty-Five) Days.**

### 2. Contact information:

**Purchase Department  
Centre for Development of Advanced Computing  
Plot No. 6 & 7, Hardware Park,  
Srisaillam Highway, Via Pahadi Shareef,  
Hyderabad - 501510  
E-mail: [purchase-hyd@cdac.in](mailto:purchase-hyd@cdac.in)**

### 3. Pre-Bid Meeting

In case of any doubts and/or queries pertaining to technical solution, specifications terms and conditions of the bid, prospective bidder may send their queries in writing through e-mail. (Refer point 2 mentioned above for contact details). The queries, requests for clarifications etc. must be sent at least two days prior to the date of pre-bid meeting. The bidders are requested to go through the entire bid document thoroughly, before raising any query. The pre-bid meeting will be held at C-DAC, Hyderabad (*Hardware Park Campus*) as given in schedule, to address the queries raised by the bidders. C-DAC will try to sort out the queries during the meeting, as far as possible. The replies to queries would be made available on [www.eprocure.gov.in](http://www.eprocure.gov.in) in due course of time. All the queries, doubts, clarifications etc. must be submitted on or before 17.00 hrs of 21.05.2026 in xls format only.

Name of the bidder				
Sl.No.	Section / Page No	Clause Reference	Query from bidder	C-DAC Response

### 4. Two bid System – Online submission through

<https://www.eprocure.gov.in/eprocure/app>:

The Two-e-bid system will be followed for this tender. In this system, bidder must submit their offer - online in e-packets as explained below:

#### Online - Envelope No. 1: "Technical eBid" shall contain: (PDF format only)

- i. Covering letter, as per Annexure – A.
- ii. Authorization letter (on bidder's letterhead) issued by the competent authority of bidder, authorizing the signatory to sign on behalf of the bidder, as per Annexure – B
- iii. Scanned copy of UTR/Transaction proof towards tender fee of Rs. 2,360/- (Rupees Two Thousand Three Hundred and Sixty Only) paid through NEFT to CDAC, Hyderabad.
- iv. Scanned copy of UTR/Transaction proof towards EMD of Rs. 2,55,000/- (Rupees Two Lakhs Fifty-Five Thousand Only) paid through NEFT to CDAC, Hyderabad. (The proof of remittance/transaction slip or supporting documents, exempting the bidder to submit the EMD, must be uploaded along with the other documents on or before the Due Date & Time of the Tender). The document submitted for claiming exemption of EMD should clearly indicate the appropriate category matching the Item Description. The offer without the receipt for EMD shall not be considered. The EMD shall bear no interest. EMD will not be accepted in the form of cash /cheque
- v. A copy of Certificate of Incorporation, Partnership Deed / Memorandum and Articles of Association / any other equivalent document showing date and place of incorporation, as applicable, in support of eligibility criteria.

- vi. Bidder should have minimum annual sales turnover of 42 Lakhs for each of last three financial years. The copy of the certificate from a Chartered Accountant for the financial year 2022-2023, 2023-2024, 2024-25 indicating the annual sales turnover of the bidder.
- vii. The detailed technical specification, make, model, part number & **compliance of each item offered** supported by the printed catalogue / leaflet published by the Principal Manufacturer, should be provided in the **Compliance Table** as per format given in **Annexure G**.
- viii. Copy of supply order / installation reports in the name of bidder indicating that the bidder has satisfactorily completed at least -
- three works of similar nature each costing not less than 40% of the estimated cost  
OR  
completed at least two works of similar nature each costing not less than 50% of the estimated cost  
OR  
completed at least one works of similar nature costing not less than 80% of the estimated cost with any Central Government or State Government or Organisations of Central/State government. The successful completion certificate issued by client not below the rank of Executive Engineer should contain date of start, date of completion, value on completion etc.
- (Note: Similar Works means interior works or restoration work or renovation works (consisting of the Partitions, Workstations, False-roofing, Electrical, Fire-safety, HVAC and Furniture)
- ix. Only the principal manufacturers or their authorised system integrators are allowed to bid for the items as mentioned in the tender document. The specific authorisation letter from Principal/s clearly indicating that the bidder is competent to sell & provide services for the items mentioned in the Scope of Supply given in this tender document. The undertaking on the letterhead of Principal Manufacturer as per format given in **Annexure - C** must be submitted.
- x. Undertaking from the OEM to the effect that the products offered are not nearing end-of-life / end-of-support three years down the line from the date of bidding.
- xi. Undertaking to the effect that a Security Deposit of 5% of the order value will be submitted in case C- DAC decides to place the Purchase Order.
- xii. A photo copy of the commercial bid without prices (**prices blocked**) and copy of commercial terms & conditions (in details) as included in the Financial bid. C-DAC reserves the right to reject the bid in case of discrepancy observed in the un-priced Financial Bid and the actual Financial bid.
- xiii. All the Commercial Terms (Applicable Taxes, Delivery Period, Transportation etc) of the Bid, should explicitly mentioned in the Technical Bid.
- xiv. Undertaking to the effect that the terms and conditions, clauses etc. stipulated in this tender are acceptable as per **Annexure- E** attached.
- xv. Duly filled Technical Bid with proper seal and signature of the authorised person (with name, designation, email id & contact no.) The authority letter, as per the format attached at **Annexure – B**

- xvi. Other documents necessary in support of eligibility criteria, product catalogues, brochures etc.

**NOTE: C-DAC RESERVES THE RIGHT TO REJECT THE BID IF ANY OF THE ABOVE LISTED DOCUMENT/S IS NOT SUBMITTED.**

**5. Online - Envelope 2: “Financial eBid” shall contain: (PDF format only)**

The Financial Bid along with detailed terms and conditions, complete in all respects with proper seal and signature of authorised person with name, designation, email id and contact no.

**6. Both the Technical bid and Financial bid should be addressed to:**

**Purchase Department  
Centre for Development of Advanced Computing  
Plot No. 6 & 7, Hardware Park,  
Srisailam Highway, Hyderabad – 501510**

**Date of submission/Due Date of bids and opening of the Technical bids – Online.**

Last date for uploading the ebids is on **June 04, 2026** up to **15:00 Hrs** through [www.eprocure.gov.in/eprocure/app](http://www.eprocure.gov.in/eprocure/app) portal:

**7. Technical ebids will be opened - online on June 05, 2026 at 16:00 Hrs through [www.eprocure.gov.in/eprocure/app](http://www.eprocure.gov.in/eprocure/app) portal at:**

Centre for Development of Advanced Computing (C-DAC)  
Plot No. 6 & 7, Hardware Park, Srisailam Highway, Hyderabad – 501510  
Email: [purchase-hyd@cdac.in](mailto:purchase-hyd@cdac.in)

The bids must be submitted on-line. The representatives (maximum two) of bidders are welcome to attend the opening of the `online` technical ebids.

**In case bidder requires any clarifications / information, they may contact C-DAC address given in Clause 2 of Section I. / at email id [purchase-hyd@cdac.in](mailto:purchase-hyd@cdac.in), on or before 21.05.2026 – 17:00 Hrs.**

**Note:** Please do not include Financial details/Prices in the technical bid. If the price quoted is submitted / leaked with technical bid, the tender will be rejected at the sole discretion of C-DAC.

**8. Opening of Financial ebids – online through [www.eprocure.gov.in/eprocure/app](http://www.eprocure.gov.in/eprocure/app):**

Financial ebids of the qualified bidders will be opened, in the presence of the bidders or their authorized representative of the bidders, who choose to attend, at the time place and date to be informed later. The authorized representative of bidders, present at the time of opening of the bids shall be required to sign an attendance register as a proof of having attended the commercial bid opening.

The bidder's name, bid prices, discounts and other appropriate details will be displayed at the time of the opening of the commercial bids.

*(END OF SECTION I)*

## SECTION II: GENERAL CONDITIONS OF CONTRACT (GCC)

### 1. Locations for the Supply and Installation

The works as described in Schedule of Requirements must be Supplied, Installed, Commissioned, and Executed at:

**Centre for Development of Advanced Computing (C-DAC)  
Plot No. 6 & 7, Hardware Park, Srisailam Highway,  
Hyderabad - 501510**

### 2. Delivery Period:

The works as described in the Schedule of Requirements (Section – IV) must be executed/completed within **6 weeks** from the date of placement of order. This includes the Work Completion, Site Inspection, Handing Over the site along with issuance of Satisfactory Work Completion.

### 3. Order Placements:

The Supply Order shall be released by:  
**Centre for Development of Advanced Computing (C-DAC)  
Plot No. 6 & 7, Hardware Park, Srisailam Highway  
Hyderabad 501510, Telangana, INDIA.**

The payments shall be released by:  
**Centre for Development of Advanced Computing (C-DAC)  
Hardware Park, Srisailam Highway, Hyderabad**

### 4. Eligibility Criteria:

- i. Should have satisfactorily completed at least -
- ii. Three works of similar nature each costing not less than 40% of the estimated cost  
OR
- iii. Completed at least two works of similar nature each costing not less than 50% of the estimated cost  
OR
- iv. Completed at least one works of similar nature costing not less than 80% of the estimated cost with any Central Government or State Government or Organisations of Central/State government. The successful completion certificate issued by client not below the rank of Executive Engineer should contain date of start, date of completion, value on completion etc.  
  
(Note: Similar Works means interior works or restoration work or renovation works (consisting of the Partitions, Workstations, False-roofing, Electrical, Fire-safety, HVAC and Furniture)
- v. Should have valid Commercial Tax/GST/EPF/PAN Number. Should furnish proof of submission of latest Income Tax return.
- vi. Should have valid company/firm/partnership registration.

- vii. Should be registered with any of the CPWD, PWD, MES, PSUs, BSNL, Railways and State government's Organization.
- viii. Should have an annual average turnover equal to the 50% of estimated cost of the respective work during the last three Financial Years
- ix. Latest Bank solvency certificate for amount of at least 50% of estimated cost from bank issued in financial year 2024-25 or 2025-26.
  - x. Since this is a composite tender, the bidders should submit Authorisation Certificate(s) from the manufacturers wherever necessary. These certificates should be submitted as part of the Technical bid.
  - xi. The furniture to be supplied by the bidder should meet all quality standards and manufactured in a plant having facilities like robotic welding, panel cutting and sizing, anti-rust treatment facility and also should be having fully automated power coating booth, router machine, edge-binder machine, and hot-press machine along with the in-house testing facilities for establishing the performance standards of the products.
  - xii. The bidder should be willing to get the manufacturing/production capabilities inspected by the C-DAC to judge the level of competency for undertaking the Project.
  - xiii. The defects liability period is 1 year from the date of completion. The bidder should be in a position to provide annual maintenance contract for a minimum period of 3 years.
  - xiv. The bidder should not be under a declaration of ineligibility for corrupt and/or fraudulent Practices issued by any Government entity.
  - xv. The bidders should not have been blacklisted by any Government / Semi Government Organization, unless such blacklisting has been cancelled/ removed.
  - xvi. Local Office & Experience Requirement: The contractor shall have an established office and continuous business presence in Hyderabad. Supporting documentary evidence such as GST registration, incorporation certificate, trade license, or past work orders shall be submitted along with the bid.
  - xvii. Site Inspection: The intending bidder shall inspect the site and existing premises before submission of the tender to acquaint himself with site conditions, nature of work, dismantling of existing furniture, shifting requirements, approach, restrictions, and other factors affecting execution of the work. No claim whatsoever shall be entertained by the Department on account of ignorance of site conditions.
  - xviii. Dedicated Toll-Free Support: The Bidder/OEM shall have a dedicated toll-free telephone number for service support.
  - xix. Safety Measures & Personal Protective Equipment (PPE) The contractor shall be solely responsible for the safety of all persons employed at the work site. The contractor shall provide and ensure use of PPE such as safety helmets, safety shoes, gloves, reflective jackets, safety goggles, masks, and any other safety gear as required, at no extra cost. Any accident or mishap occurring due to negligence or non-compliance shall be the sole responsibility of the contractor.

- xx. Compliance with Labor Laws: The contractor shall comply with all applicable labor laws including Minimum Wages Act, EPF, ESI, Workmen Compensation Act, and other statutory provisions.
- xxi. Bidder or its OEM must have toll Free for Service Support. Documentary proof in this regard is to be attached.
- xxii. The Bidder or its OEM should have the following plant and machinery and testing equipment's in its factory / manufacturing unit: • Amada Turret Punch • Power Press Machine • Power Shearing Machine • Through feed edge banding Machine • Panel Saw Machine • MIG welding machine • Pipe Bending Machine • Pneumatic Drill Machine • Pre Heating Oven, Salt Spray Chamber • CNC Router • CNC Laser Cutting Machine The copies of invoices IN THE NAME OF THE OEM along with the photographs of machineries should be enclosed with the tender.
- xxiii. A valid Inspection report/ feasibility report of the above required plant and machinery /testing equipment's issued by third party agency like IRS/SGS/RITES to be submitted for this prospect or any other prospect (report should not be older than 3 years.
- xxiv. The bidder or its OEM should have both BIFMA Membership and IGBC Membership since last 3 years or more continuously. Copies of Certificates should be enclosed.
- xxv. The Bidder or its OEM must have successfully completed at least one single order of 80% of estimated bid quantity of the primary category product (Workstation/Computer Table) or more in of the any last three years i.e. (2023-2024,2024-2025 and 2025-2026) to any Central / State Govt Organization / PSU /Govt Educational Institutes or Universities. Copy of the work order and completion certificate to be submitted along with Bid. Non-Compliance of this shall result in rejection of this bid.
- xxvi. The bidder or its OEM must have following ISO Certificates and the same should be accredited form NABCB accredited agencies: -

xxvii.	ISO 9001:2015
xxviii.	ISO 13485:2016
xxix.	ISO 14001:2015
xxx.	ISO 45001:2018
xxxi.	ISO 50001:2018

- xxxii. The bidder or is OEM must submit Green Co Gold CII, GRIHA and SVAGRIHA Certificate. Copy of the certificate is to be uploaded with the bid documents.

**Note:** The bidders should provide sufficient documentary evidence to support the eligibility criteria. C-DAC reserves the right to reject any bid not fulfilling the eligibility criteria.

## 5. Exemptions:

If in the view of bidder, any exemption / relaxation are applicable to them from any of the eligibility requirements, under any Rules, process, Guidelines, Directives of Government of India, bidder may submit their claim for the applicable exemption /relaxation, quoting the valid Rule, process, Guidelines or Directives. In this case the bidder must submit necessary and sufficient valid documents along with the technical bid, in support of their claim. The relevant and valid certificates in support of claim of exemption must be submitted.

## 6. Amendment to Bidding Documents

- i. At any time prior to the deadline for submission of bids, C-DAC may, for any reason, whether on its own initiative or in response to the clarification request by a prospective bidder, modify the bid document.
- ii. The amendments to the tender documents, if any, will be notified by release of Corrigendum Notice on [www.eprocure.gov.in/eprocure/app](http://www.eprocure.gov.in/eprocure/app) / [www.cdac.in/tender](http://www.cdac.in/tender) against this tender. The amendments/ modifications will be binding on the bidders.
- iii. C-DAC at its discretion may extend the deadline for the submission of bids if it thinks necessary to do so or if the bid document undergoes changes during the bidding period, in order to give prospective bidders time to take into consideration the amendments while preparing their bids.

## 7. Preparation of Bids

Bidder should avoid, as far as possible, corrections, overwriting, erasures or postscripts in the bid documents. In case however, any corrections, overwriting, erasures or postscripts have to be made in the bids, they should be supported by dated signatures of the same authorized person signing the bid documents. However, bidder shall not be entitled to amend/ add/ delete/ correct the clauses mentioned in the entire tender document.

## 8. Earnest Money Deposit (EMD)

- i. The Earnest Money Deposit (EMD) must be submitted prior to the DUE DATE & TIME of submission of the online technical bid. The EMD is required to be paid through NEFT to C-DAC Hyderabad for an amount of Rs. 2,55,000/- (Rupees Two Lakhs Fifty-Five Thousand Only).
- ii. The EMD will be returned to the bidder(s) whose offer is not accepted, within 30 days from the date of opening of Financial bid(s). In case of the bidder whose offer is accepted, the EMD will be returned on submission of Security Deposit (Refer Clause 2 of Section III). However, if the return of EMD is delayed for any reason, no interest/ penalty shall be payable to the bidder.
- iii. The successful bidder, on award of contract / order, must send the contract/ order acceptance in writing, within 14 days of award of contract/ order, failing which the EMD will be forfeited and the order will be cancelled.
- iv. The EMD may be forfeited:
  - o If the bidder withdraws the bid during the period of bid validity specified in the tender.

- In case a successful bidder, fails to furnish the Performance Bank Guarantee (Refer Clause 4 of Section III).
- If the bidder fails to furnish the acceptance in writing, within 14 days of award of contract/ order.

## 9. Period of validity of bids

- i. Bids shall be valid for minimum 180 days from the date of submission. A bid valid for a shorter period shall stand rejected.
- ii. C-DAC may ask for the bidder's consent to extend the period of validity. Such request and the response shall be made in writing only. The bidder is free not to accept such request without forfeiting the EMD/BG. A bidder agreeing to the request for extension will not be permitted to modify his bid.

### 1. Submission of Bids- Online PDF format only.

The Bid documents shall be neatly arranged. They should not contain any terms and conditions, printed or otherwise, which are not applicable to the Bid. **The conditional bid will be summarily rejected.** Insertions, postscripts, additions and alterations shall not be recognized, unless confirmed by bidder's signature.

## 10. Deadline for Submission of Bids – Online Only.

Bids must be uploaded in the portal before the due date and time.

- i. C-DAC will not be responsible for any issues arising/pertaining with the eprocure.gov.in/eprocure/app portal for non-submission, failure in submission of ebids online.
- ii. C-DAC may extend this deadline for submission of bids by amending the bid documents and the same shall be suitably notified in the media.
- iii. C-DAC shall not be responsible and liable for the delay in receiving the bid for whatsoever reason.

## 11. Clarifications on Bid

CDAC, Hyderabad shall hold a pre-bid meeting with the prospective bidders for any clarifications regarding RFP technical specifications and RFP terms & conditions. Queries received, from the bidders, prior to the pre-bid meeting shall be addressed. All clarifications/queries on the technical specifications, tender terms and conditions, etc.; should be requested in writing by email on or before: 21.05.2026 (17.00 hrs.). Clarifications/queries from bidder shall be accompanied by Section no....., page no..... and clause no. ....of tender document. CDAC, Hyderabad reserves all rights to clarify any queries received after the above mentioned date. CDAC, Hyderabad shall publish all clarifications as corrigendum in CPP portal by: 25.05.2026 (17.00hrs). Individual mails on the clarifications to the queries raised will not be sent to any of the bidders. CDAC, Hyderabad will not be bound to clarify any query received after the stipulated date and time for submission of queries.

## 12. Bid Opening & Evaluation of Bids

- i. The technical bids will be evaluated in two steps.
  - The bids will be examined based on eligibility criteria stipulated at Para 4 of Section – II to shortlist the eligible bidders.
  - The technical bids of only the short-listed eligible bidders shall be evaluated based on technical specifications stipulated at Section – IV.

- ii. The bidders whose technical bid is found to meet both the requirements as specified above will qualify for opening of the commercial bid and will be informed about the date and time of the opening of the commercial bid.
- iii. The duly constituted Tender Evaluation Committee (TEC) shall evaluate the bids. The TEC shall be empowered to take appropriate decisions on minor deviations, if any.
- iv. The bidder's name, bid prices, discounts and such other details considered as appropriate by C-DAC, will be announced at the time of opening of the Financial bids.

### **13. Comparison of Bids**

- i. Only the short-listed bids from the technical evaluation shall be considered for Financial comparison.
- ii. For the purpose of comparison All Inclusive Prices shall be considered for the purpose of comparison.

### **14. Award of Contract**

- i. C-DAC shall award the contract to the eligible bidder whose technical bid has been accepted and determined as the lowest evaluated Financial bid based on the Grand Total calculated of all items + taxes etc. of the Financial Bids. However, C-DAC reserves the right and has sole discretion to reject the lowest evaluated bid.
- ii. If more than one bidder happens to quote the same lowest price, C-DAC reserves the right to decide the criteria and further process for awarding the contract, decision of C-DAC shall be final for awarding the contract.

### **15. End User Certificate (if applicable):**

C-DAC can provide end user certificate in advance in order to save on time/ delivery period. However, this does not mean that the order shall be placed on the same bidder. The bidder may submit the format of end user certificate at the earliest, preferably along with the technical bid.

### **16. Purchaser's Right to amend / cancel**

- i. C-DAC reserves the right to amend the eligibility criteria, commercial terms & conditions, Scope of Supply, technical specifications etc.
- ii. C-DAC reserves the right to cancel the entire tender without assigning any reasons thereof.

### **17. Corrupt or Fraudulent Practices**

- i. It is expected that the bidders who wish to bid for this project have highest standards of ethics.
- ii. C-DAC will reject bid if it determines that the bidder recommended for award has engaged in corrupt or fraudulent practices while competing for this contract;
- iii. C-DAC may declare a vendor ineligible, either indefinitely or for a stated duration, to be awarded a contract if it at any time determines that the vendor has engaged in corrupt and fraudulent practices during the award / execution of contract.

### **18. Interpretation of the clauses in the Tender Document / Contract Document**

In case of any ambiguity/ dispute in the interpretation of any of the clauses in this Tender Document, the interpretation of the clauses by Director General, C-DAC shall be final and binding on all parties.

Except where provided for in the description of the individual items in the schedule of quantities and in the specifications and conditions laid down hereinafter and, in the Drawings, the work shall be carried out as per standard specifications and under the direction of the Employer / Consultant.

## 19. INTERPRETATION

In construing these conditions, the specifications, the schedule of quantities, tender and Agreement, the following words shall have the meaning herein assigned to them except where the subject or context otherwise requires:

- i) **Employer:** The term Employer shall denote C-DAC having their Building at Hardware Park, Srisailam Road, Hyderabad and any of its employees / representatives authorized on their behalf.
- ii) **Contractor:** The Contractor shall mean the individual or firm or company whether incorporated or not, undertaking the work and shall include legal representative(s) of such individual or persons composing such firm or company or successors of such firm or company as the case may be and permitted assigns of such individual or firm or company.
- iii) **Site:** The site shall mean the site where the work are to be executed as shown within the boundary in red border on the site plan including any building and erections thereon allotted by the Employer for the Contractors use.
- iv) **Site Engineer / Project Management Consultant (PMC):** The Site Engineer shall be appointed by the Employer. The Employer may also appoint the Project Management Consultant (PMC).
- v) **Drawings:** The work is to be carried out in accordance with drawings, specifications, the schedule of quantities and any further drawings which may be supplied or any other instruction, which may be given by the Employer / Consultant during the execution of the work.

All drawings relating to work given to the Contractor together with a copy of schedule of quantities are to be kept at site and the Employer/ Consultant shall be given access to such drawings or schedule of quantities whenever necessary.

The Contractor shall ask in writing for all clarifications on matters occurring anywhere in drawings, specifications and schedule of quantities or to additional instructions at least 20 days ahead from the time when it is required for implementation so that the Employer / Consultant may be able to give decision thereon.

- vi) **“The Work”** shall mean the work to be executed or done under this contract.
- vii) **“Act of Insolvency”** shall mean any act as such as defined by the presidency Towns Insolvency Act or in Provincial Insolvency Act or any amending statues.
- viii) **“The Schedule of Quantities”** shall mean the schedule of quantities as specified and forming Part of this contract.

- ix) **“Priced Schedule of Quantities”** shall mean the schedule of quantities duly priced with the accepted quoted rates of the Contractor.

## 20. SCOPE

The work consists of **Interior Work – Setting Up of Employee Workstation** in accordance with the drawings and “Schedule of items and quantities”. It includes furnishing all materials, labour, tools and equipment and management necessary for and incidental to the construction and completion of the work. All work, during its progress and upon completion, shall conform to the lines, elevations and grades as shown on the drawings furnished by the Employer / Consultant. Should any detail, essential for efficient completion of the work be omitted from the drawings and specifications it shall be the responsibility of the Contractor to inform the Employer / Consultant and to furnish and install such detail with Employers’ / Consultant’s concurrence, so that upon completion of the proposed work the same will be acceptable and ready for use.

Employer / Consultant may in their absolute discretion issue further drawings and/or written instructions, details, directions and explanations, which are, here after collectively referred to as “The Employer’s / Consultant’s instructions” in regard to :

- a) The variation on modification of the design, quality or quantity of work or the addition or omission or substitution of any work.
- b) Any discrepancy in the drawings or between the schedule of quantities and/or drawings and / or specification.
- c) The removal from the site of any defective material brought thereon by the Contractor and the substitution of any other material thereof.
- d) The opening up for inspection of any work covered up.
- e) The rectification and making good of any defects under clauses hereinafter mentioned and those arising during the Defect Liability period.

The contractor shall forthwith comply with and duly execute any work comprised in such Employer’s / Consultant’s instructions, provided always that verbal instructions, directions and explanations given to the Contractor or his representative upon the work by the Employer / Consultant shall if involving a variation be confirmed in writing to the contractor within seven days. No work for which rates are not specifically mentioned in the priced schedule of quantities shall be taken up without written permission of the Employer / Consultant. Rates of items not mentioned in the priced schedule of quantities shall be fixed by the Employer in consultation with the Consultant as provided in clause “variation”.

## 21. DETAILED DRAWING AND INSTRUCTIONS

The Employer through its Consultant shall furnish with reasonable promptness additional instructions by means of drawings or otherwise necessary for the proper execution of the work. All such drawings and instructions shall be consistent with the Contract Documents, true developments thereof, and reasonably inferable there from.

The work shall be executed in conformity therewith and the Contractor shall not work without proper drawings and instructions.

Immediately after receipt of the work order of the contract the contractor shall prepare a detailed progress schedule and submit the same to the Employer through the Consultant for approval which shall indicate the dates for the starting and completion of the various stages of constructions.

### **COPIES FURNISHED**

The Contractor on the signing hereof shall be furnished by the Employer through its Consultant free of charge with a copy of the priced schedule of quantities / rates, two copies of each of the said drawings and one copy of specifications and two copies of all further drawings issued during the progress of the work. Any further copies of such drawings required by the Contractor shall be supplied on payment of the charges thereof by the contractor.

### **OWNERSHIP OF DRAWING**

All drawings, specifications and copies thereof furnished by the Employer through its Consultants are the property of the Employer. They are not to be used on other work, and with the exception of the signed contract set, are to be returned to the Employer on request at the completion of the work.

## **22. FAILURE BY CONTRACTORS TO COMPLY WITH EMPLOYER'S / CONSULTANT'S INSTRUCTONS**

If the contractor after receipt of written notice from the Employer and/or the Consultant requiring compliance of any instructions within ten days fails to comply with such further drawings and/or Employer's / Consultant's instructions, the Employer through the Consultant or other person, may employ other person to execute any such work whatsoever that may be necessary to give effect thereto and pay all cost incurred in connection therewith and same shall be recoverable from the contractor by the Employer on the certificate of the Consultant as a debt or shall have right to deduct same from any moneys due or to become due to the contractor.

## **23. BIDDER SHALL VISIT THE SITE**

Intending tendered shall visit the site and make himself thoroughly acquainted with the local site condition, nature and requirements of the work, facilities of transport condition, effective labour and materials, access and storage for materials and removal of rubbish. The Bidder shall provide in their tender for cost of carriage, freight and other charges as also for any special difficulties and including police restriction for transport etc for proper execution of work as indicated in the drawings. The successful Bidder will not be entitled to any claim of compensation for difficulties faced or losses incurred on account of any site condition which existed before the commencement of the work or which in the opinion of the Employer / Consultant might be deemed to have reasonably been inferred to be so existing before commencement of work.

## **24. AGREEMENT**

The successful Contractor shall sign the agreement as per draft agreement annexed within 15 days from the date of issue of formal work order and he shall pay for all stamps and legal expenses incidental thereto. However, the written acceptance of the Bidder by the Employer / Consultant on behalf of Employer will constitute a binding contract between the Employer and the person so tendering whether such formal agreement is or not subsequently executed.

## **25. ROYALTIES & PATENTS**

The contractor shall pay all royalties and license fees. He shall defend all suits or claims for infringement of any patent rights and shall save the Employer harmless from loss on account thereof.

## **26. PERMITS AND LICENCES**

Permits and licenses for release of materials which are under Government control will be arranged by the contractor. The Employer will render necessary assistance, sign any forms or applications that may be necessary.

## **27. GOVERNMENT AND LOCAL RULES**

The Contractor shall conform to the provisions of all local Bylaws and Acts relating to the work and to the Regulations etc. of the Government and Local Authorities and of any company with whose system the structure is proposed to be connected. The Contractor shall give all notices required by the said Act, Rules, Regulations and Bylaws etc and pay all fees payable to such authority / authorities for execution of the work involved. The cost, if any, shall be deemed to have been included in his quoted rates, taking into account all liabilities for licenses, fees for footpath encroachment and restorations etc. and shall indemnify the Employer against such liabilities and shall defend all actions arising from such claims or liabilities.

## **28. TAXES AND DUTIES**

The Bidders must include in their tender prices quoted for all duties, royalties, cess, excise, GST or any other taxes or local charges if applicable. No extra claim on this account will in any case be entertained. Payment of service tax if applicable shall be the sole responsibility of the contractor and the rate quoted by the contractor shall be deemed to be inclusive GST. No extra claim for service tax shall be payable to the contractor. C-DAC will not provide Form C or any such concessional form for relaxation of Taxes/ Octroi etc.

## **29. PROVISIONAL SUMS (P.S)**

All provisional sum described in the schedule of quantities as P.S shall be exclusively allotted to the purchase of materials & not for any handling & fixing with profit (or transportation charges where and if required) which shall be separately included in the contract price and described in the schedule of quantities. The disposal of the amounts covered under this head will be absolutely at the discretion of the Employer. Contractor is to make payments for these materials to the suppliers on certificate or order issued by the Employer / Consultant and release them through his bills from the Employer.

## **30. QUANTITY OF WORK TO BE EXECUTED**

The Quantities shown in the Schedule of quantities are intended to part the entire new structure indicated in the drawings but the Employer reserves the right to execute only a part or the whole or any excess thereof without assigning any reason therefore. If at any time after the commencement of the work, the Employer / Consultant shall for any reason whatsoever not require the whole work thereof as specified in the tender to be carried out, the Consultant / Employer shall give notice in writing of the fact to the contractor who shall have no claim to any payment or compensation whatsoever on account of any profit or advantage with which he might have derived from the execution of the work in full, but which he did not derive in consequence of the full amount of the work not having been carried out; neither shall he have any claim for compensation by reason of any alterations having been made in the original

specification, drawing, designs and instructions which shall involve any curtailment of the work as originally contemplated.

### 31. OTHER PERSONS ENGAGED BY THE EMPLOYER

The Employer reserves the right to execute any Part of the work included in this contract or any work which is not included in this contract by other Agency or persons and the Contractor shall allow all reasonable facilities and use of his scaffolding for the execution of such work. The General building Contractor shall extend all co-operation in this regard.

### 32. CONTRACTOR TO PROVIDE EVERYTHING NECESSARY

The Contractor shall provide everything necessary for the proper execution of the work according to the intent and meaning of the drawings schedule of quantities and specifications taken together whether the same or may not be particularly shown or described therein provided that the same can reasonably be inferred there from and if the Contractor finds any discrepancies therein he shall immediately and in writing refer the same to the Employer / Consultant whose decision shall be final and binding. The Contractor shall provide himself for fresh and tested water for carrying out the work at his own cost. **The Employer shall on no account be responsible for the expenses incurred by the Contractor for hired ground or fresh water obtained from elsewhere. Single point electricity will be provided by C-DAC with sub-meter and contractor will bear the electricity charges as per sub-meter reading.**

The rates quoted against individual items will be inclusive of everything necessary to complete the said items of work within the contemplation of the contract and beyond the unit price no extra payment will be allowed for incidental or contingent work, labour and / or materials inclusive of all taxes and duties whatsoever except for specific items, if any stipulated in the tender documents.

The Contractor shall supply, fix and maintain at his own cost, for the execution of any work, all tools, tackles, machineries and equipments and all the necessary centering, scaffolding, staging, planking, timbering, strutting, shoring, pumping, fencing, boarding, watching and lighting by night as well as by day required not only for the proper execution and protection of the said work but also for the protection of the public and safety of any adjacent roads, streets, walls, houses, buildings, all other erections, matters and things and the Contractor shall take down and remove any or all such centering, scaffolding, planking, timbering, strutting, shoring, etc., as occasion requires or when ordered so to do and shall fully reinstate and make good all matters and things disturbed during the execution of work to the satisfaction of the Employer / Consultant.

The Contractor shall also provide such temporary road on site as may be necessary for the proper performance of the contract, and for his own convenience but not otherwise. Upon completion, such road shall be broken up and leveled where so required by the drawings unless the Employer shall otherwise direct.

The Contractor shall at all times give access to workers employed by the Employer or any men employed on the buildings and to provide such parties with proper sufficient and if required, special scaffolding, hoists and ladders and provide them with water and lighting and leave or make any holes, grooves etc. in any work, where directed by the Employer as may be required to enable such workmen to lay or fix pipes, electrical and telephone conduit laying, special fittings, etc. The quoted rates of the tenderes shall accordingly include all these above mentioned contingent work.

### 33. TIME OF COMPLETION, EXTENSION OF TIME AND PROGRESS CHART

a) Time of Completion:

The entire work is to be completed in all respects within the stipulated period of 90 days. The work shall be deemed to be commenced from the date of issue of formal work order or the date on which the Contractor is instructed to take possession of the site whichever is later. Time is the essence of the Contractor and shall be strictly adhered to by the Contractor.

The work shall not be considered as complete until the Employer / Consultant have certified in writing that this has been completed and the Defects Liability Period shall commence from the date of such certificate.

b) Extension of Time:

If in the opinion of the Employer / Consultant the work be delayed (a) by reason of any exceptionally inclement weather, or (b) by reason of instructions from the Employer / Consultant in consequence of proceedings taken or threatened by or disputes, with adjoining or neighboring owners or (c) by the work, or delay, of other contractors or tradesmen engaged or nominated by the Employer / Consultant and not referred to in the specification or (d) by reason of authorized extra and additions or (e) by reason of any combination of workmen or strike or lock-out affecting any of the building trades or (f) from other causes which the Employer / Consultant may consider are beyond the control of the Contractor, the Employer at the completion of the time allowed for the contract shall make fair and reasonable extension of time for completion in respect therefore. In the event of the Employer failing to give possession of the site upon the day specified above the time of completion shall be extended suitably.

In case of such strikes or lock-outs, as are referred to above, the Contractor shall, immediately give the Employer, written notice thereof. Nevertheless, the Contractor shall use his best endeavors to prevent delay, and shall do all that may be reasonably required, to the satisfaction of the Employer / Consultant to proceed with the work and on his doing so that it will be ground of consideration by the Employer / Consultant for an extension of time as above provided. The decision of the Employer as to the period to be allowed for an extension of time for completion hereunder (which decision shall be final and binding on the Contractor) shall be promulgated at the conclusion of such strike or lock-out and the Employer shall then, in the event of extension being granted, determine and declare the final completion date. The provision in Clause 20 with respect to payment of liquidated damages shall in such case, be read and construed as if the extended date fixed by the Employer were substituted for and the damage shall be deducted accordingly.

Hindrance Register in the approved format shall be maintained and proper record of hindrances arisen and solved with the dates to be recorded in the register by the Employer's Site Engineer / Consultant's Site Engineer and Contractor's authorized representative so that extension of time to be granted can be derived from the register and recommended by the Consultant and approved by the Employer.

c) Progress of work / work programme:

During the period of construction/execution of work, the Contractor shall maintain proportionate progress on the basis of the Programme Chart submitted by the Contractor immediately before commencement of work and agreed to by the Employer / Consultant. Contractor should also include planning for procurement for scarce materials well in advance

and reflect the same in the Programme Chart so that there is no delay in completion of the project.

#### **34. LIQUIDATED DAMAGES**

Should the work be not completed to the satisfaction of the Employer / Consultant within the stipulated period, the Contractor shall be bound to pay to the Employer a sum calculated @ 0.5% of the accepted contract sum per week of delay subject to a maximum of 5% of the accepted contract value by way of liquidated damages and not as penalty during which the work remains un-commenced or unfinished after the expiry of the completion date.

#### **35. ACTIONS WHEN WHOLE OF SECURITY DEPOSIT IS FORFEITED**

In any case in which under any clause or clauses of this contract, the contractor shall have rendered himself liable to pay liquidated damages amounting to the whole of his security deposit (whether paid in one sum or deducted by installments) the Employer shall have power to adopt any of the following courses as they may deem best suited to the interest of the Employer :-

- a. To rescind the contract (of which rescission notice in writing to the contractor under hand of the Employer shall be conclusive evidence), and in which case the security deposit of the contractor shall stand forfeited and be absolutely at the disposal of the Employer.
- b. To employ labour by the Employer and to supply materials to carry out the work, or any part of the work, debiting the contractor with the cost of the labour and price of material (of amount of which cost and price of a certificate of the Consultant shall be final and conclusive against the contractor) and crediting him with the value of the work done, in all respects in the same manner and at the same rates as if it had been carried out by all contractor under the terms of this contract the certificate of the Employer as to the value of the work done, shall be final and conclusive against the contractor.
- c. To measure up the work of the contractor, and to take such part thereof as shall be unexecuted, out of his hands, and to give it to another contractor to complete in which any expenses which may be incurred in excess of the sum which would have been paid to the original contractor, if the whole work had been executed by him (of the amount of which excess the certificates in writing of the Consultant shall be final and conclusive) shall be borne and paid by the original contractor and may be deducted from any money due to him by the Employer under the contract or otherwise, or from his security deposit or the proceeds of sale thereof or a sufficient part thereof.

In the event of any of the above courses being adopted by the Employer / Consultant the contractor shall have no claim to compensation for any loss sustained by him by reasons of his having purchased or procured any materials or entered into any engagements, or make any advances on account of the contract. And in case the contract shall be rescinded under the provision aforesaid, the contractor shall not be entitled to recover or be paid any sum for any work thereto for actually performed under this contract unless and until the Employer / Consultant will have certified in writing the performance of such work and the value payable in respect thereof , and he shall only be entitled to be paid the value so certified.

#### **36. TOOLS, STORAGE OF MATERIALS, PROTECTIVE WORKS AND SITE OFFICE REQUIREMENTS**

The contractor shall provide, fix up and maintain in an approved position proper office accommodation for the Contractor's representative and staff, which offices shall be open at all reasonable hours to receive instruction notices or communications and clear away on completion of the work and make good all work distributed.

All drawings maintained on the site are to be carefully mounted on boards of appropriate size. They are to be protected from ravages of termites, ants and other insects.

The Contractor shall provide at his own cost all artificial light required for the work and to enable other contractors and sub-contractors to complete the work within the specified time.

The Contractor shall provide a suitable temporary hut for the watchmen and clear away the same when no longer required and to provide all necessary attendance, lights etc, required.

The Contractor shall arrange for temporary latrines for the use of workers and field staff and keep the same in a clean and sanitary condition to the satisfaction of the Public Health Authorities and shall cause such latrines and soil to be cleared away whenever necessary and shall make good all the work disturbed by these conveniences.

Every precaution shall be taken by the Contractor to prevent the breeding of mosquitoes on the work during the construction and all receptacles, cisterns, water tanks etc. used for storage of water must be suitably protected against breeding of mosquitoes. The contractor shall indemnify the Employer against any each of rules in respect of anti-malarial measures.

The Contractor shall not fix or place any placards or advertisement of any description or permit the same to be fixed or placed in or upon any boarding gantry, building structure other than those approved by the Employer.

### **37. PROTECTIVE MEASURES**

The Contractor from the time of being placed in possession of the site must make suitable arrangements for watching, lighting and protecting the work, the site and surrounding property by day, by night, on Sundays and other holidays.

The Contractor shall indemnify the Employer against any possible damage to the building, roads, or member of the public in course of execution of the work.

The Contractor shall provide necessary temporary enclosures, gates, entrances etc. for the protection of the work and materials and for altering and adopting the same as may be required and removing on completion of the work and making good all work undisturbed.

### **38. STORAGE OF MATERIALS**

The Contractor shall provide and maintain proper sheds for the proper storage and adequate protection of the materials etc. and work that may be executed on the site including the tools and materials of sub-contractors and remove same on completion. Sheds for storage of cement are to have pucca floor raised above the ground. Cement godown shall be constructed for storing about six weeks requirements of cement and stored as per norms with a stack of 10 bags each, two ft. opening all around with two ft. passage between each stack. Structure shall be waterproof from all the sides and top. Cement should be stored one ft. above the ground level and have pucca raised floor.

So also reinforcement bars are to be stored above the ground level to prevent the same from getting rusted.

**Tools**

All tools, equipment and instruments as instructed by the Employer / Consultant and considered necessary for the work shall be provided by the Contractor for the due performance of this contract.

All measuring tapes shall be of steel and suitable scaffolding and ladders that may be required for taking measurement shall be supplied by the Contractor.

The maestries and the supervisors on the work shall carry with them always an one metre or two metre steel tapes and a measuring tape of 30 metres, a spirit level, a plumb bob and a square and shall check the work to see that the work is being done according to the drawing and specifications. The Site Engineer will use any or all measuring instruments or tools belonging to the contractors as he chooses for checking the work executed or being executed on the contract.

The Contractor should cover in his rates for making provisions for all reasonable facilities for the use of his erected scaffolding, and / or tools and plant etc by sub-contractors for their work or for work to be carried out by other agencies employed by the Employer / Consultant.

The contractor is responsible for disposal of dismantled waste materials in disposal yard and also storing of serviceable materials in neat and organized pattern and location during dismantling/demolishing.

**39. NOTICE AND PATENTS OF APPROPRIATE AUTHORITY AND OWNERS**

The Contractor shall conform to the provisions of any Act of the Legislature relating to the work and to the Regulations and Bylaws of any authorities, and/or any water, lighting and work and to the Regulations and Bylaws of any authorities with whose systems the structure were proposed to have connection and shall before making any variations from the drawings or specification that may be associated to so conform, give the Employer / Consultant written notices specifying the variations proposed to be made and the reasons for making them and apply for instruction thereon. The Employer / Consultant on receipt of such intimation, shall give a decision within a reasonable time.

The Contractor/s shall arrange to give all notices required for by the said Acts. Regulations or Bylaws to be given to any authority, and to pay to such authority or to any public officer all fees that may be properly chargeable in respect of the work and lodge the receipts with the Employer.

The Contractor shall indemnify the Employer against all claims in respect of patents rights, royalties, damages to buildings, roads or member of public in course execution of work and shall defend all actions arising from such claims and shall keep the Employer saved harmless and indemnified in all respects from such actions, costs and expense.

**40. CLEARING SITE AND SETTING OUT WORKS**

The site shown on the plan be cleared of all obstructions, trees, bushes, shrubs, loose stone, and rubbish materials of all kinds. All holes or hollows whether originally existing or produced by removal or loose stone or materials shall be carefully filled up with earth well rammed and leveled off as directed at his own cost.

The Contractor shall set out the work and shall be responsible for the true and perfect setting out of the work and for the correctness of the positions, levels, dimensions and alignment of

all parts thereof. If at any time, any error shall appear during the progress of any part of the work, the Contractor shall at his own expenses rectify such error, if called upon to the satisfaction of the Employer / Consultant. The Contractor shall further set out the work to the alternative positions at the site until one is finally approved and the rates quoted in his tender should include for this and no extra on this account will be entertained.

#### **41. DATUM**

The 'datum' will be furnished by the Consultant / Employer in conformity with regulations of appropriate Authority. The contractor shall make arrangements for preserving the above datum till completion of the work. All levels shown in the drawings are to be strictly adhered to.

#### **42. BENCHES**

The Contractor is to construct and maintain proper benches of all the main walls, in order that the lines and levels may be accurately checked at all times.

These benches will consist of timber posts of adequate length and minimum diameter 75mm to be driven in the ground at suitable distance as directed encased with brick work. The wire nails will be driven on the top of wooden post on the center line of columns, walls, inside and outside faces of foundation trenches. Center line of walls, columns etc. may be clearly indicated so that checking may be done at any time, if it is so required.

#### **43. CONTRACTOR IMMEDIATELY REMOVE ALL OF OFFENSIVE MATTERS**

All soil, filth or other matters of any offensive nature taken out of any trench, sewer, drain, cesspool or other place shall not be deposited on the surface but shall be at once carted away by the Contractor to a safe place as per rules of the appropriate authorities.

The Contractor shall keep the foundations/site and work free from water and shall provide and maintain at his own expenses electrical or other power driven pumps and other plants to the satisfaction of the Employer for the purpose, until the building is handed over to the Employer.

The Contractor shall arrange for the disposal of the water and waste so accumulated to the satisfaction of the Employer and the local authority and no claims will be entertained afterwards if he does not include in his rates for the purpose.

#### **44. ACCESS**

Any authorized representative or the Employer / Consultant shall at all reasonable times have free access to the work and/or to the workshops, factories or other places where materials are being prepared or constructed for the work and also to any place where the materials are lying or from where they are being obtained, and the Contractor shall give every facility to the Employer or their representatives necessary for inspection and examination and test of the materials and workmanship. Except the representatives of the Employer and Consultant no person shall be allowed at any time without the written permission of the Employer.

#### **45. MATERIALS, WORKMANSHIP, SAMPLES, TESTING OF MATERIALS**

All the work specified and provided for in the specifications or which may be required to be done in order to perform and complete any part thereof shall be executed in the best and most workman like manner with materials of the approved quality of the respective kinds in accordance with the particulars contained in and implied by the specifications and as represented by the drawings or according to such other additional particulars, and instructions as may from time to time be given by the Employer / Consultant during the execution of the work, and to his entire satisfaction.

A list of Mandatory Tests is annexed (Appendix III) which is only indicative and not exhaustive. The contractor will have to carry out the tests at his own cost in any approved testing laboratory as necessary. Any other tests, special or routine, on any material or workmanship, if advised to be done by the Employer / Consultant for any reason whatsoever, shall be carried out by the Contractor for which no additional payment will be made.

A list of materials of approved make and brand is shown in the “Technical Specifications”. Materials are to be used from the annexed approved materials list. In case of non-availability of specified makes, alternative products of equivalent quality may be used with prior permission from the Employer / Consultant.

All the materials (except where otherwise described) stores and equipment required for the full performance of the work under the contract must be provided through normal channels and must include charges for all duties, sales tax, octroi and other charges legally payable and must be the best of their kind available and the Contractor/s must be entirely responsible for the proper and efficient carrying out of the work. The work must be done in the best workman like manner. Samples of all materials to be used must be submitted to the Employer / Consultant when so directed by the Employer / Consultant and written approval from Employer / Consultant and written approval from Employer / Consultant must be obtained prior to placement of order.

During the inclement weather, the Contractor shall suspend concreting and plastering for such time as the Employer / Consultant may direct and shall protect from injury all work during its course of execution. Any damage (during construction) to any part of the work for any reasons due to rain, storm or neglect of Contractor, shall be rectified by the Contractor in an approved manner at no extra cost.

Should the work be suspended by reason of rain, strike, lock-outs or any other cause, the Contractor shall take all precautions necessary for the protection of work and at his own expenses shall make good any damage arising from any of these causes.

The Contractor shall cover up and protect from damage, from any cause, all new work and supply all temporary doors, protection to window, and any other requisite protection from the execution of the work whether by himself or special tradesmen or sub-Contractor and any damage caused must be made good by the Contractor at his own expenses.

#### **46. REMOVAL OF IMPROPER WORK**

The Employer / Consultant shall during the progress of the work have power to order in writing from time to time the removal from the work within such reasonable time or times as may be specified in the order of any materials which in the opinion of the Employer / Consultant are not in accordance with specifications or instructions, the substitutions or proper re-execution of any work executed with materials or workmanship not in accordance with the drawings and specifications or instructions. In case the Contractor refuses to comply with the order the Employer / Consultant shall have the power to employ and pay other agencies to carry out the work and all expenses consequent thereon or incidental thereto as certified by the Employer / Consultant shall be borne by the Contractor or may be deducted from any money due to or that may become due to the Contractor. No certificate which may be given by the Consultant shall relieve the Contractor from his liability in respect of unsound work or bad materials.

#### **47. SITE ENGINEER / PROJECT MANAGEMENT CONSULTANTS (PMC)**

The term Site Engineer / Project Management Consultants (PMC) shall mean the person appointed and paid by the Employer to superintend the work. The Contractor shall afford

the Site Engineer / PMC every facility and assistance for examining the work and materials and for checking and measuring work and materials. The Site Engineer / PMC shall have no power to revoke, alter, enlarge or relax any requirements of the contract or to sanction any day work, additions, alterations, deviations, or omission or any extra work whatever, except in so far as such authority may be specially confirmed by a written order of the Employer.

The Site Engineer / PMC shall have power to give notice to be Contractor or to his foreman, of non-approval of any work or materials and such work shall be suspended or the use of such materials shall be discontinued until the decision of the Employer / Consultant is obtained. The work will from time to time be examined by the Consultant, Engineer of the Employer and the Site Engineer / PMC. But such examination shall not in way exonerate the Contractor from the obligation to remedy any defects which may be found to exist at any stage of the work or after the same is complete. Subject to the limitations of this clause the Contractor shall take instructions only from the Consultant / Employer.

#### 48. CONTRACTOR'S EMPLOYEES

The Contractor shall employ technically qualified and competent supervisors for the work who shall be available (by turn) throughout the working hours to receive and comply with instruction of the Employer / Consultant. The Contractor shall engage at least one experienced Engineer as Site Engineer for execution of the work. The Contractor shall employ in connection with the work persons having the appropriate skill or ability to perform their job efficiently.

The Contractor shall have to deploy supervisor, civil masons, mason labours, carpenters, carpenters helpers, Tile masons, tile labours, painters, painters helpers, licensed electricians and electrician helpers etc to carry out such work comfortably.

The Contractor shall employ local labourers on the work as far as possible.

No labourer below the age of 18(**Eighteen**) years and who is not an Indian National shall be employed on the work.

Any labourer supplied by the Contractor to be engaged on the work on day-work basis either wholly or partly under the direct order or control of the Employer or his representative shall be deemed to be a person employed by the contractor.

The Contractor shall comply with the provisions of all labour legislation including the requirements of –

- a: The Payment of Wages Act
- b: Employer's Liability Act
- c: Workmen's Compensation Act
- d: Contract Labour (Regulation and Abolition) Act, 1970 and Central Rules – 1971.
- e: Apprentices Act 1961
- f: Any other Act or enactment relating thereto and rules framed there under from time to time.

The Contractor shall keep the Employer saved harmless and indemnified against claims if any of the workmen and all costs and expenses as may be incurred by the Employer in connection with any claim that may be made by any workmen.

The Contractor shall comply at his cost with the order of requirement of any Health Officer of the State or any local authority or of the Employer regarding the maintenance of proper environmental sanitation of the area where the Contractor's labourers are housed or accommodated for the prevention of small pox, cholera, plague, typhoid, malaria and other contagious diseases. The Contractor shall provide, maintain and keep in good sanitary condition adequate sanitary accommodation and provide facilities for pure drinking water at all times for the use of men engaged on the work and shall remove and clear away the same on completion of the work. Adequate precautions shall be taken by the Contractor to prevent nuisance of any kind on the work or the lands adjoining the same.

The Contractor shall arrange to provide first-aid treatment to the labourers engaged on the work. He shall within 24 hours of the occurrence of any accident at or about the site or in connection with execution of the work, report such accident to the Consultant / Employer and also to the competent authority where such report is required by law.

#### **49. DISMISSAL OF WORKMEN**

The Contractor shall on the request of the Employer / Consultant immediately dismiss from work any person employed thereon by him, who may in the opinion of the Employer / Consultant be unsuitable or incompetent or who may misconduct himself. Such discharge shall not be the basis of any claim for compensation or damages against the Employer / Consultant or any of their officer or employee.

#### **50. ASSIGNMENT**

The whole of the work included in the contract shall be executed by the Contractor and the Contractor shall not directly or indirectly transfer, assign or underlet the contract or any part, share or interest therein nor, shall take a new partner, without written consent of the Employer and no subletting shall relieve the Contractor from the full and entire responsibility of the contract or from active superintendence of the work during their progress.

#### **51. NOMINATED SUB-CONTRACTOR**

All specialists, Merchants, Tradesmen and others executing any work or supply and fixing any goods for which prime cost prices or provisional sums are included in the Schedule of Quantities / Rates and / or specifications who may be nominated or selected by the Employer are hereby declared to be sub-contractors employed by the contractor and are herein referred to as nominated sub-contractors.

No nominated sub-contractor shall be employed on or in connection with the work against whom the contractor shall make reasonable objection or save where the Employer and contractor shall otherwise agree who will not enter into a contract provided:

- a. That the nominated sub-contractor shall indemnify the contractor against the same obligations in respect of the subcontract as the Contractor is under in respect of this contract.
- b. That the nominated sub-contractor shall indemnify the contractor against claims in respect of any negligence by the sub-contractor, his servants or agents or any misuse by him or them of any scaffolding or other plants the property of the contractor or under any Workman's compensation Act in force.
- c. Payment shall be made to the nominated sub-contractor by the contractor within fourteen days of his receipt of the Consultant's certificate provided that before any

certificate is issued the contractor shall upon request furnish to the Consultant proof that all nominated sub-contractor's accounts included in previous certification have been duly discharged, in default whereof the Employer may pay the same upon a certificate of the Consultant and deduct the amount thereof from any sums due to the contractor. The exercise of this power shall not create privity of contract between the Employer and the sub-contractor.

## **52. DAMAGE TO PERSONS AND PROPERTY, INSURANCE ETC.**

The Contractor shall be responsible for any injury to the work or workmen to persons, animals or things and for all damages to the structural and/or decorative part of property which may arise from the operations or neglect of himself or of any sub-Contractor or of any of his or a sub-Contractor's employees, whether such injury or damage arise from carelessness, accident or any other cause whatsoever in any way connected with the carrying out of this contract. The clause shall be held to include inter-alia, any damage to buildings whether immediately adjacent or otherwise, and any damage to roads, street, foot-paths or pathways as well as damage caused to the buildings and the work forming the subject of this contract by rain, wind or other inclemency of the weather. The Contractor shall indemnify and hold harmless the Employer in respect of all and any expenses arising from any such injury or damages to persons or property as aforesaid and also in respect of any claim made in respect of injury or damage under any acts of compensation or damage consequent upon such claim.

The Contractor shall reinstate all damage of every sort mentioned in this clause, so as to deliver the whole of the contract work complete and perfect in every respect and so as to make good or otherwise satisfy all claims for damages to the property or third parties.

## **53. INSURANCES**

The Contractor shall obtain a policy covering under Workmen Compensation Act, a third party Insurance as well as any other insurance and indemnity the Employer entirely from all responsibility in this respect. The insurance must be placed with a company approved by the employer.

Unless otherwise instructed the Contractor shall insure the work and keep them insured until the virtual completion of the contract against loss or damage by fire and/or earthquake, flood or damages from whatever cause by an "All Risk Insurance Policy" for the full value of the contract and workmen. The minimum limit of coverage for third party insurance shall be 0.5% (Zero point five percent) of the accepted contract sum per occasion and maximum four occurrences a year at any time of the contract period.

The insurance is to be at their own cost and must be placed with a company approved by the Employer, in the joint names of the Employer and the Contractor for such amount. For any further sum if called upon to do so by the Employer, the premium of such further sum being allowed to the Contractor as an authorized extra.

Moreover, the contractor will be required to obtain "Workmens Compensation Insurance" from an approved insurance company at his own cost.

The Contractor shall deposit the policy and receipt for premiums paid with the Employer within 21 (twenty one) days from the date of commencement of the work unless otherwise instructed. In default of the Contractor insuring as provided above, the Employer, on his behalf may so insure and may deduct the premiums paid from any money due, or which may become due to the contractor. The Contractor shall as soon as the claim under the policy is settled or

the work reinstated by the Insurance Company should they elect to do so, proceed with due diligence with the completion of work in the same manner as though the fire has not occurred and in all respects under the conditions of the contract. The Contractor in case of rebuilding or reinstatement after fire, shall be entitled to extension of time for completion as the Employer may deem fit.

Insurance is compulsory and must be effected from the very initial stage. The Contractor shall also be responsible for any thing which may be excluded from damage to any property arising out of incidents, negligence or defective carrying out of this contract.

The employer shall be at liberty and is hereby empowered to deduct the amount of any damages, compensations, costs, charges and expenses arising or accruing from or in respect of any such claim or damages from any sums due or to become due to the Contractor.

#### **54. ACCOUNTS RECEIPTS AND VOUCHERS**

The Contractor shall, upon the request of the Employer / Consultant furnish them all the invoices, accounts, receipts and other voucher that they may require in connection with the work under this contract.

If the Contractor shall use materials less than what he is required under the contract, the value of the difference in the quantity of the materials he was required to use and that he actually used shall be deducted from his dues. The decisions of the Employer shall be final and binding on the Contractor as to the amount of materials the Contractor is required to use for any work under this contract.

#### **55. MEASUREMENT OF WORK**

The Contractor will record the measurements in the approved printed measurement book available in the Consultant's office on payment and submit measurements for verification and endorsement of Project Management Consultant / Site Engineer and representatives of Consultant and Employer. The contractor should submit the bill with such endorsement.

The Consultant shall upon receipt of the bill intimate to the contractor that he requires the work to be measured, and the contractor shall forthwith attend or send a Qualified Agent to assist the Consultant or the Consultant's Representative / Employer's Representatives in taking such measurements and calculations and to furnish all particulars or to give all assistance required by either of them.

Should the Contractor not attend or neglect or omit to send such Agent then the measurement taken by the Consultant or a Representative approved by him shall be taken to be the correct measurement of the work.

The Contractor or his Agents may at the time of measurement take such notes and measurements as he may require. All authorized extra work, omissions and all variations made without the Consultant's knowledge, if subsequently sanctioned by him in writing, with the approval of the Employer shall be included in such measurements. The final measurement should be done within three months from the date of completion of work jointly by the Consultant and / or his Representative. If the contractor fails to comply, the measurements taken by the Consultant will be final.

#### **56. METHOD OF MEASUREMENT**

Unless otherwise mentioned elsewhere in the tender document, measurements will be done on the net quantities of work produced in accordance with upto date rules laid down by the Indian

Standard Institution. In the event of any dispute with regard to the measurement of the work executed, the decision of the Consultant / Employer shall be final and binding on the contractor.

#### **57. ACTION WHERE NO SPECIFICATION**

In the case of any class of work for which there is no such specification in Technical Specification, such work shall be carried out in accordance with the I.S. Specification and in the event of there being no I.S. Specification, then in such case the work shall be carried out in all respects in accordance with the instructions and requirements of the Consultant / Employer.

#### **58. CONTRACTOR NOT TO DEPOSIT MATERIALS IN A MANNER THAT MAY CAUSE INCONVENIENCE TO THE PUBLIC**

The contractor (s) shall not deposit materials on any site which will cause inconvenience to the public. The Employer / Consultant may require the contractor to remove any materials, which are considered by him to be a danger or inconvenience to the public or cause them to be removed at the contractors cost.

#### **59. PAYMENTS**

Based on certification by the PMC/Site Engineer, payment to contractor will be made on actual quantities consumed for the works:

The Consultant / Employer shall issue a certificate after due scrutiny of the Contractor's bill stating the amount due to the Contractor from the Employer and the Contractor shall be entitled to payment thereof

If the Employer has supplied any materials or goods to the Contractor, the cost of any such materials or goods will be progressively deducted from the amount due to the Contractor in accordance with the quantities consumed in the work.

The final bill shall be submitted by or of the date of certificate of completion furnished by the Consultant and payment shall be made by the Employer within three months from the date of receipt of the final bill duly verified & certified by the Consultant.

#### **FINAL PAYMENT**

The final bill shall be accompanied by a certificate of completion from the Consultant. Payment of final bill shall be made after deduction, if any. The acceptance of payment of the final bill by the Contractor would indicate that he will have no further claim in respect of the work executed.

#### **60. VARIATION / DEVIATION**

The Contractor may when authorized and shall when directed in writing by the Employer add and / or omit or vary the works shown in the drawings or described in the specifications or included in the Price Schedule of Quantities. The Contractor on his own accord shall make no addition, omission or variation without such authorization or direction by the Employer or his accredited representative shall when confirm correctly by the contractor in writing within 3 days shall be deemed to have been given in writing.

The price all of such non-tendered / substituted items will be worked out on the basis of rates quoted for similar items in the contract wherever existing or on Engineering rate analysis based on prevalent fair price of labour, materials at site of work and other components as required.

No claim for an extra shall be allowed unless it shall have been executed by the authorization of Employer / Consultant. No variation i.e. addition, omission or substitution shall vitiate the contract.

#### **61. SUBSTITUTION**

Should the Contractor desire to substitute any materials and workmanship, he/they must obtain the approval of the Employer / Consultant in writing for any such substitution well in advance of a minimum 15 days along with reasons & justification. For materials designated in this specifications by such term as “Equal” or “Other approved” etc. specific approval of the Employer / Consultant has to be obtained in writing.

#### **62. PREPARATION OF BUILDING WORKS FOR OCCUPATION AND USE ON COMPLETION**

The whole of the work will be thoroughly inspected by the Contractor and deficiencies and defects put right. On completion of such inspection, he shall inform the Consultant that he has completed the work and it is ready for inspection.

On completion, the Contractor shall clean all windows & doors including cleaning and oiling, if necessary, of all hardware, inside & outside, all floors, staircases and every part of the building. He will leave the entire building neat and clean and ready for immediate occupation and to the satisfaction of the Employer / Consultant.

#### **63. CLEARING SITE ON COMPLETION**

On completion of the work the Contractor shall clear away and remove from the site all constructional plant, surplus materials, rubbish and temporary work of every kind and leave the whole of the site and the work clean and in a workmanlike condition to the satisfaction of the Employer / Consultant.

#### **64. DEFECTS AFTER COMPLETION**

The Contractor shall make good at his own cost and to the satisfaction of the Employer / Consultant all defects, shrinkage, settlements or other faults which may appear within 12 months after completion of the work and considered as the “defect liability period”. In default the Employer may employ and pay other persons to amend and make good such damages, losses and expenses

Consequent thereon or incidental thereto shall be made good and borne by the Contractor and such damages, loss and expenses shall be recoverable from him by the Employer or may be deducted by the Employer, in lieu of such amending and making good by the Contractor, deduct from any money due to the Contractor a sum equivalent to the cost of amending such work and in the event of the amount retained being insufficient recover that balance from the Contractor from the amount retained under Clause No.17 together with any expenses the Employer may have incurred in connection therewith.

#### **65. CONCEALED WORK**

The Contractor shall give due notice to the Employer / Consultant whenever any work is to be buried in the earth, concrete or in the bodies of walls or otherwise becoming inaccessible later on in order that the work may be inspected and correct dimensions taken before such burial, in default whereof the same shall, at the opinion of the Employer / Consultant be either opened up for measurement at the Contractor’s expense or no payment be made for such materials. Should any dispute or difference arise after the execution of any work as to measurements etc.

or other matters which cannot be conveniently tested or checked, the notes of the Employer / Consultant shall be accepted as correct and binding on the Contractor.

#### **66. ESCALATION**

The rates quoted shall be firm throughout the tenure of the contract (including extension of time, if any, granted) and will not be subject to any fluctuation due to increase in cost of materials, labour, sales tax, octroi, etc. unless specifically provided in these documents.

#### **67. IDLE LABOUR**

Whatever the reasons may be, no claim for idle labour, additional establishment cost of hire and labour charges of tools and plants would be entertained under any circumstances.

#### **68. SUSPENSION**

If the Contractor except on account of any legal restraint upon the Employer preventing the continuance of the work or in the opinion of the Employer shall neglect or fail to proceed with due diligence in the performance of his part of the contract or if he shall more than once make default the Employer shall have the power to give notice in writing to the Contractor requiring the work be proceeded within a reasonable manner such notices purport to be a notice under this Clause.

After such notice shall have been given, the Contractor shall not be at liberty to remove from the site of the work or from any ground contiguous thereto, any plant or materials to subsist from the date of such notice being given until the notice shall have been complied with. If the

Contractor shall fail for 7 (Seven) days after such notice has been given to proceed with the work as therein prescribed, the Employer may proceed as provided in the Clause 54. (Termination of Contract by the Employer).

#### **69. TERMINATION OF CONTRACT BY EMPLOYER**

If the Contractor being a company go into liquidation whether voluntary or compulsory or being a firm shall be dissolved or being an individual shall be adjudicated insolvent or shall make an assignment or a composition for the benefit of the greater part, in number of amount of his creditors or shall enter into a Deed or arrangement with his creditors, or if the Official Assignee in insolvency, or the Receiver of the Contractor in insolvency, shall repudiate the contract, or if a Receiver of the Contractor's firm appointed by the court shall be unable, within fourteen days after notice to his requiring him to do so, to show to the reasonable satisfaction of the Employer that he is able to carry out and fulfill the contract and if so required by the Employer to give reasonable security there for, or if the Contractor shall suffer execution to be issued, or shall suffer any payment under this contract to be attached by or on behalf of and of the creditors of the contractor, or shall assign, charge or encumber this contract or any payments due or which may become due to the Contractor, there under, or shall neglect or fail to observe and perform all or any of the acts matters of thing by this contract, to be observed and performed by the Contractor in manner hereinafter mentioned requiring the Contractor to observe or perform the same or shall use improper materials or workmanship in carrying on the work, or shall in the opinion of the Employer not exercise such due time agreed upon and shall fail to proceed to the satisfaction of the Employer after three clear days notice requiring the Contractor so to do shall have been given to the Contractor as hereinafter mentioned, or shall abandon the contract, then and in any of the said cases, the Employer may not withstanding previous waiver determine the contract by a notice in writing to the effect as

hereinafter mentioned, but without thereby affecting the powers of the Employer of the obligations and liabilities of the Contractor the whole of which shall continue in force as fully as if the contract had not been so determined and as if the work subsequently executed had been executed by or on behalf of the Contractor (without thereby creating any trust in favour of the Contractor) further the Employer or his agent, or servants, may enter upon and take possession of the work and all plants, tools, scaffolding, sheds, machinery, steam and other power, utensils and materials lying upon premises or the adjoining lands or roads and sell the same as his own property or may employ the same by means of his own servants and workmen in carrying on and completing the work or by employing any other contractors or other persons or person to complete the work, and the Contractor shall not in any way interrupt or do any act, matter or thing to prevent or hinder such other contractors or other persons or person employed from completing and furnishing or using the materials and plants for the work when the work shall be completed, or as soon thereafter as conveniently may be the Employer shall give notice in writing to the Contractor to remove his surplus materials and plants and should the Contractor fail to do so within a period of 14 days after receipt by him the Employer may sell the same by Public Auction and shall give credit to the Contractor for the amount so realized. Any expenses or losses incurred by the Employer in getting the work carried out by other contractors shall be adjusted against the amount payable to the Contractor by way of selling his tools and plants or due on account of work carried out by the Contractor prior to engaging other contractors or against the Security Deposit.

## **70. ARBITRATION**

All disputes/claims of any kind arising out of Supply, Erection, Execution of Work, Warranty maintenance etc under this Contract, shall be referred by either party (C-DAC or the bidder) after issuance of 30 days notice in writing to the other party clearly mentioning the nature of dispute to the Sole Arbitrator appointed by C-DAC. The venue for arbitration shall be specified in the purchase order/agreement. The arbitration proceedings shall be conducting in English and as per the provisions of Indian Arbitration and Conciliation Act, 1996. The decision of the Arbitrator shall be final and binding on both the parties.

## **JURISDICTION AND GOVERNING LAWS**

Any disputes, legal action/matters, arising out of/ resulting from/related or incident to the tender /quotation/purchase order/invoices/delivery/payments shall be subject to exclusive jurisdiction of Hyderabad courts only. Laws of India shall govern this tender as well as any or all transactions /documents/deeds/actions/PO arising out of/ resulting from this tender.

*(END OF SECTION II)*

### ***SECTION III: SPECIAL CONDITIONS OF CONTRACT (SCC)***

#### **1. Prices**

1.1. The price quoted shall be considered firm and no price escalation will be permitted (except Govt. Statutory Levies).

1.2. Bidder must quote in INR only.

1.3. The prices must be quoted exclusive of Taxes and applicable Taxes and Levies must be mentioned in the 'Financial bid format'. The statutory taxes and duties applicable at the time of supply of material shall be applicable.

#### **2. Security Deposit (SD):**

The successful bidder will be required to furnish the Security Deposit in INR equivalent to 5% of the order value within 10 days of receipt of Supply Order. The Security Deposit should be paid through NEFT to CDAC, Hyderabad. The Security Deposit will be returned upon completion of Supply, Erection/Fixing/Installation on submission of Performance Bank Guarantee (PBG).

#### **4. Performance Bank Guarantee (PBG):**

The successful bidder will be required to furnish the Performance Guarantee towards the Works Completed; in the form of a Bank Guarantee in INR equivalent to 5% amount of the Supply Order value, as per the format attached to this document (**Annexure – D**). This bank guarantee should be submitted along with the invoice after successful installation within 15 days. The Bank Guarantee shall remain valid for the period of 14 months from the date of Work Completion. The PBG must be negotiable at a branch of issuing bank in India. In case of no warranty claims towards the items under warranty, the PBG will be returned on completion of warranty period.

#### **5. Completeness Responsibility:**

Notwithstanding the scope of work, engineering, supply and services stated in bid document, any equipment or material, engineering or technical services which might not be even specifically mentioned under the scope of supply of the bidder and which are not expressly excluded there from but which – in view of the bidder - are necessary for the performance of the equipment in accordance with the specifications are treated to be included in the bid and has to be performed by bidder. The items which are over & above the scope of supply specified in the Schedule of Requirements may be marked as “Optional Items”.

#### **6. Installation and Acceptance Criteria**

The installation will include Installation/Commissioning/Fixing of the ordered items and handing over the site after work completion as defined in the Scope of the Contract.

#### **7. Warranty:**

The Supplier warrants that all the Goods are new, unused, and of the most recent or current models, and that they incorporate all recent improvements in design and materials, unless provided otherwise in the Contract. The supplier further warrants that all Goods supplied under this contract shall have no defect arising from design, materials or workmanship (except when the design and/or material is required by the Purchaser's specifications) or from any act or omission of the supplier. The warranty should be comprehensive on site, repair/replacement basis free of cost.

## 8. Payments:

For payments in INR: 95% of the payment will be released on Satisfactory Completion of Works at C-DAC with 30 days Credit. Balance 5% shall be released against submission of PBG, as per clause 4 of Section III given above. PBG must be submitted within 15 days from the date of acceptance report.

## 9. Submission of Documents:

The **Invoices** shall be marked as given below:

**Centre for Development of Advanced Computing (C-DAC)**  
**Plot No. 6 & 7, Hardware park, Srisaïlam Highway,**  
**Hyderabad - 501510**

## 10. Penalty for delayed Delivery /Services

C-DAC reserves the right to levy penalty @ of 0.5 % of order value per week of delay beyond the scheduled deliveries / execution of the order successfully, subject to maximum of 5 % of the order value.

C-DAC reserves the right to cancel the order in case the delay is more than 10 weeks.

The delay in delivery and/or installation not attributed to supplier viz. delay in site preparation, delay in submission of required documents (by C-DAC) etc. and the conditions arising out of Force Majeure will not be considered for the purpose of calculating penalties.

## 11. Jurisdiction:

The disputes, legal matters, court matters, if any shall be subject to Hyderabad jurisdiction only.

## 12. Force Majeure:

C-DAC may consider relaxing the penalty and delivery requirements, as specified in this document, if and to the extent that, the delay in performance or other failure to perform its obligations under the contract is the result of an Force Majeure. Force Majeure is defined as an event of effect that cannot reasonably be anticipated such as acts of God (like earthquakes, floods, storms etc.), acts of states / state agencies, the direct and indirect consequences of wars (declared or undeclared), hostilities, national emergencies, civil commotion and strikes at successful Bidder's premises or any other act beyond control of the bidder.

## 13. Arbitration:

All disputes/claims of any kind arising out of supply, commissioning, acceptance, warranty maintenance etc under this Contract, shall be referred by either party (C-DAC or the bidder) after issuance of 30 days notice in writing to the other party clearly mentioning the nature of dispute to the Sole Arbitrator appointed by C-DAC. The venue for arbitration shall be specified in the purchase order/agreement. The arbitration proceedings shall be conducting in English and as per the provisions of Indian Arbitration and Conciliation Act, 1996. The decision of the Arbitrator shall be final and binding on both the parties.

## 14. Risk and Ownership:

Upon 90% of payment, C-DAC shall become owners of goods ordered but all risks, responsibilities; liabilities thereof in all goods shall remain with selected bidder till delivery of all goods to all end users. Part deliveries shall not be treated as deliveries. Only full deliveries of all items ordered will be considered as delivery.

## 15. Indemnity:

Selected bidder shall save, indemnify and hold harmless C-DAC from any third party Govt. Claims, losses penalties, if any, arising in connection with this Contract.

**16. Assignment:**

Selected bidder/ Party shall not assign, delegate or otherwise deal with any of its rights or obligation under this Contract without prior written permission of C-DAC.

**17. Severability:**

If any provision of this Contract is determined to be invalid or unenforceable, it will be deemed to be modified to the minimum extent necessary to be valid and enforceable. If it cannot be so modified, it will be deleted and the deletion will not affect the validity or enforceability of any other provision.

**18. Extra Items**

The following procedure shall be meticulously adopted in case of any extra item.

- Project Manager shall issue a contemplated change order in the format enclosed
- For the purpose of cost analysis the following procedure applies

**(A) O.H. and profit of main Civil Contractor's work shall not exceed 15% (inclusive of tools & plants, scaffolding, handling, shifting & storing materials, ESI/ PF, Supervision &/ or other miscellaneous expenses).**

**(B) The Contractor shall furnish if & when required by the Project Manager original Invoices/ vouchers in support of any rates and/or to prove that the materials procured are as per specifications. However, in case it is found that the documents/ rates have been manipulated / doctored, or the materials can be procured by the Project Manager at rates lower than claimed by the Contractor, the lower of the two shall be referred to for deriving the rate of the item.**

19. The coefficient of labour, material and wastage shall be adopted as / CPWD norms or adopted from standard analysis of Rate manuals available in the market.

20. The decision of the Project Manager shall be final in deciding which manual to be referred to.

21. Safety Measures: It shall be the sole responsibility of the Contractor to ensure all safety measures giving proper prior notices etc. and obtaining prior permission from concerned local authorities as per bye-laws or directions issued by them all at his own cost. No claim of the Contractor in this regard shall be entertained

22. Site Order Book: The Contractor shall maintain a site order book at site of the work. Any special orders and instructions to be issued to the Contractor at site will be recorded in this book which will be numbered and initialed by the Project Manager. The Contractor will however sign all the orders as a token of information received by him and take action accordingly.

23. Water Supply & Electricity: The Contractor shall make his own arrangements for appropriate quality and quantity of water required for construction, drinking, storage etc. Laying of water lines for construction purpose shall be done by the Contractor at no extra cost. Electrical power for construction purposes shall be arranged and provided by the Contractor. It is to be noted that the power from State Electricity Board may not be continuous and there may be possibilities of disruption of power. Therefore, it is the Contractor's responsibility to install a generator of adequate capacity right from the start of the work. The supply installation and maintenance

including cost of consumables like diesel etc. will be Contractors responsibilities. All the expenses of the generator and the electrical connection to be borne by the Contractor only. Non-availability of electricity cannot be a cause for extension of time or increase in cost.

24. Land for Labour Hutment: No labor will be allowed to stay on site. Contractor to make all arrangements for the labor to stay & transportation to and from site of work. The Contractor has to keep the Site Office, Godowns and Labor Hutment etc in proper hygienic conditions at all times. The necessary Labor License has to be obtained from the statutory authority by the Contractor at his own cost.

25. **Limitation of Liability:** Neither Party shall be liable to the other Party for any loss of profit or revenue (whether direct or indirect), loss of opportunity or loss of goodwill, and/or any indirect, special or consequential loss of any kind arising out of or in connection with this Agreement, whether in Contract, tort (including negligence), equity, under statute or otherwise, notwithstanding that it had been informed or had notice (whether actual or constructive), or had contemplated or foreseen the possibility, of such loss or such loss results from supervening events or circumstances after the signing date. Any liability of a Party under or arising from this Agreement shall be reduced proportionately to the extent that any act or omission of the other Party or its employees, agents or representatives contributed to such liability. The maximum liability arising out of this Agreement on contractor shall not exceed the total contract value.

*(END OF SECTION III)*

*Section – IV: Schedule of Requirements*

Sl No.	Work Description	Item Description	UOM	Qty
<b>FURNITURE AND INTERIORS</b>				
1	Insulation Works	<b>UNDER DECK INSULATION:</b> Providing and Fixing under deck insulation using 19mm XLPE Foam with chemical Adhesive including cost and conveyance of all materials to site, tools and plants, labour charges, leads, lifts, scaffolding, curing and all other incidental and operational charges etc.,complete for finished item of work.	Sft	2500
2	Interior Works	<b>SOLID PARTITION:</b> Providing and fixing of SOLID PARTITIONS of 68mm : Made out of 2"x1" aluminium anodised section( ISI reputed brands) frame 2'-0" c/c both ways, covered with 09 mm thick interior grade plain Medium Density Fibre Board. All provisions to be made for all electrical, networking boxes onto partition framework at required heights/levels with necessary additional supports as directed.	Sft	250
3	Interior Works	<b>POLYSTER WOOL:</b> Providing and fixing Polyester Wool Insulation composed of Poly fibers, thermally bonded(no Chemical is used) with following specifications, Density UPTO 500 Gsm/sq.m, thermal conductivity at 25 Deg C 1000 Gsm 50mm thk-0.023W/Mk 1S3346-1980 mean temperature, fire retardancy test 0(ZER) Guidelines of ASTM D 635, Fungi Resistance(do not promote fungi growth), noise Reduction Coefficient: 0.65 NRC, Standard Compliance : ASTM D635, IS3346-1980.	Sft	250
4	Interior Works	<b>ALUMINIUM SKIRTING:</b> Providing & fixing of 50mm high aluminium skirting as per sample approved including necessary wastage, hardware, fixtures, base completed as per details given in drawing/Architect instruction. The profile has a 20 micron (average) anodized finish & the entire surface is supplied with a polyethylene film to protect against abrasion & stains, the film is removed at the time of handover.	Rmt	50
5	Interior Works	<b>GLASS PARTITION:</b> Providing and Fixing 12 mm thick glass full height glass .The works includes fixing of glass with Top & Bottom surfaces with proper support/frame. Including silicon sealant filling between glass joints. Glass Make : Saint Gobain/Taiton/Bottomline/Equivalent as approved by Architect	Sft	300
6	Interior Works	<b>TOUGHEN GLASS DOOR :</b> Providing & fixing 12 mm thick toughened glass Doors with reputed make floor spring,Parch fitting, S.S. Handle 12" long, Door Lock, Door stopper, and all fittings, hardware(Dorma/Ozone/Godrej) etc. complete in all respect.	No's	6

7	Interior Works	WALL/COLUMN PANELLING: Fabricating and fixing wall/column paneling to consist Aluminum Sections at spacing not exceeding 600mm bothways (horizontal and vertical). Paneling framework to be secured to wall surface/column surface. Paneling framework to be clad on one side with 12mm thick commercial ply finished with 1.0mm thk laminate including skirting of 100mm high & 12mm x 12mm groove at skirting level.	Sft	380
8	Interior Works	WINDOW PANELLING: Fabricating and fixing wall/column paneling to Metal Sections at spacing not exceeding 600mm bothways (horizontal and vertical). Paneling framework to be secured to wall surface. Paneling framework to be clad on one side with 12mm thick cement board/ calciup silicate boards, finished with painting.	Sft	280
9	Interior Works	<p>ACOUSTIC WALL PANELLING: The wall panels shall be made of high-grade PVC, ensuring durability, lightweight construction, and resistance to moisture, corrosion, and impact. The material shall be suitable for installation in high-humidity areas such as bathrooms, kitchens, and commercial interiors. The panels shall be fire-retardant and environmentally responsible, providing a sustainable solution for modern interiors.</p> <p>The panels shall feature 3D louvers or fluted designs that provide an elegant, contemporary appearance while adding depth and texture to interior walls. The finish shall be scratch-resistant, fade-resistant, and easy to maintain, ensuring longevity in high-traffic areas. The panels shall offer excellent acoustic performance with a Noise Reduction Coefficient (NRC) of 0.9, making them suitable for offices, hotels, restaurants, and residential spaces requiring enhanced sound absorption and improved acoustic comfort.</p> <p>The installation shall be lightweight, hassle-free, and suitable for screw mounting on prepared wall surfaces. Panels shall be easy to cut and customize to fit various layouts without specialized tools. The smooth, non-porous surface shall be stain-resistant and easily cleaned with a damp cloth.</p> <p>The installed system as per manufacturer's specification as per direction of Engineer-in-Charge. ( Make: Anutone, Earcons Acoustic, Top Akoustic, Plantex)</p>	Sft	1250

10	Interior Works	<p><b>BAFFLE CEILING SYSTEM:</b> Providing Baffle Ceiling System (100x25mm) To Supply vertical Linear Baffle Ceiling system , exhibiting space-delineating characteristics. The system comprises baffles 25mm wide &amp; 100mm Deep, installed at 150mm C/C distance with 0.5 mm thick made of G I sheet having galvanizing of 100 gms/sqm (both sides inclusive) and electro statically polyester powder coated of thickness 60 microns (minimum),including factory painted after bend. with Jotun Anti-microbial 60-micron powder coating activity using Test Based on MOD ISO 22196:2011. Powder coating test result should pass, Pencil hardness ASTM D3363-05, Scratch resistance ISO 1518-1/ SIS 83 91 17, Impact resistance ASTM D2794, Resistance to neutral salt spray ASTM B117, Resistance to humid atmospheres ISO 6270-2, Adhesion ISO 2409, Expected durability of the antimicrobial effect: 25+ years according to an accelerated test. The carrier rails run perpendicular to the baffles. Individual baffle lengths between 300 and 2400 mm can be selected. Baffle ceiling are supplied with the end cap matching the similar finish of baffle. Substructure Vertical baffle system consisting of L shaped galvanized slotted carriers installed perpendicular to baffles hanging carrier at maximum 1200mm centers using cross connectors. The primary profiles must be connected to one another with longitudinal splice connectors. The entire ceiling module shall be suspended with 6mm diameter galvanized steel threaded rods from the true ceiling officially approved anchor fasteners maximum at 1200mm Centres a. RAL Finish Powder Coated (NSAMET/SEPA/LINDER)</p>	Sft	200
----	----------------	--	-----	-----

11	Interior Works	<p>GYPSUM CEILING -Providing and fixing at all height false ceiling of 12.5 mm thick tapered edge gypsum board conforming to IS: 2095 including providing and fixing of frame work made of special sections power pressed from M.S. sheet and galvanized in accordance with zinc coating 600 as per IS: 277 and consisting of angle cleats of size 25 mm wide X 15 mm thick with flanges of 22 mm and 37 mm at 1200 mm centre to centre one flange fixed to the ceiling with dash fastner 12.5 mm dia X 40 mm long with 6 mm dia. Bolts to the angle hangers of 25 X 25 X 5 mm of required length, and other end of angle hanger being fixed with nuts and bolts to 6.1 channels 45 mm X 15 mm X 0.9 mm running at the rate of 1200 mm centre to centre to which the ceiling section 0.5 mm thick bottom wedge of 80 mm with tapered flanges of 26 mm each having clips of 10.5 mm at 450 mm centre to centre shall be fixed in a direction perpendicular to 6.1 channel with connecting clips made out of 2.64 mm dia. X 230 mm long 6.1 mm wire at every junction including fixing the gypsum board with ceiling section and perimeter channels 0.5 mm thick 27 mm high having flanges of 20 mm and 30 mm long, the perimeter of ceiling fixed to wall/partition with the help of rawl plugs at 450 mm centre to centre with 25 mm long drive – all screws @ 230 mm interval including joining and fixing to a flush finish of tapered and square edges of the gypsum board with recommended filler, paper tapes, finished and two coats of primer suitable for gypsum board as per manufacturers specification and also including the cost of making openings for light fittings, grills, diffusers, cut outs made with frame of perimeter channels suitably fixed finishing of all joints neatly to proper line &amp; level including providing of additional framework for electricals fixtures.including giving trap doors where ever required. Diffusers,cutouts for fire sprinklers etc. as per the specifications approved by architects Including necessary scaffolding supports, suspenders etc. All complete as per drawing.</p>	Sft	450
----	----------------	--	-----	-----

12	Interior Works	<p><b>GRID FALSE CEILING(METAL TILES):</b> Providing and fixing tiled false ceiling of GI Metal Ceiling Lay in perforated Tegular edge global white color tiles of size 595x595 mm and 0.5 mm thick with 8 mm drop(Armstrong/Saint Gobin India Gypsum/USB Boral/Hunter Douglass/Pre Approved Brand); made of GI sheet having galvanizing of 100 gms/sqm (both sides inclusive) and 20% perforation area with 1.8 mm dia holes and having NRC (Noise Reduction Coefficient ) of 0.5, electro statically polyester powder coated of thickness 60 microns (minimum), including factory painted after bending and perforation, and backed with a black Glass fiber acoustical fleece, suspended on inter locking metal grid of hot dipped galvanized steel sections ( galvanized @ 120 grams/ sqm, both side inclusive) consisting of main “T” runner with suitably spaced joints to get required length and of size 24x38 mm made from 0.30 mm thick (minimum) sheet, spaced at 1200 mm center to center and cross “T” of size 24x25 mm made of 0.30 mm thick (minimum) sheet, 1200 mm long spaced between main “T” at 600 mm center to center to form a grid of 1200x600 mm and secondary cross “T” of length 600 mm and size 24x25 mm made of 0.30 mm thick (minimum) sheet to be interlocked at middle of the 1200x600 mm panel to form grids of 600x600 mm and wall angle of size 24x24x0.3 mm and laying false ceiling tiles of approved texture in the grid including, required cutting/making, opening for services like diffusers, grills, light fittings, fixtures, smoke detectors etc. Main “T” runners to be suspended from ceiling using GI slotted cleats of size 27 x 37 x 25 x1.6 mm fixed to ceiling with 12.5 mm dia and 50 mm long dash fasteners, 4 mm GI adjustable rods with galvanised butterfly level clips of size 85 x 30 x 0.8 mm spaced at 1200 mm center to center along main T, bottom exposed width of 24 mm of all T-sections shall be pre-painted with polyester paint, all complete for all heights as per specifications, drawings and as directed by Engineer-in-charge.</p>	Sft	2500
13	Interior Works	<p><b>FRAME &amp; SHUTTER STORAGE:</b> Providing and fixing storage shutter on existing RCC storage. Made with 19 mm thick MR grade commercial ply finished both side with 1 mm thick laminate including hardware ie hinges, handle, lock etc. complete with require frame for shutter. Make:- Greenply/Archid/Kitply or equivalent</p>	Sft	480
14	Interior Works	<p><b>PLASTIC EMULSION PAINT:</b> Providing and applying plastic emulsion paint for finish to walls, blocked partitions, and plasterboard, ceiling, etc of approved shade, texture. No cornices grooves pattas shall be measures separately. Only plane surface shall be considered for measurement . All works to be carried out as per manufacturers specification and guide lines.The surface of wall or ceiling to be painted shall be prepared to the satisfaction of the Architect, and shall be applied with two coats of primer, two coats of putty and touch up putty if required to achieve smooth finish. The surface shall be painted with two coats of Plastic emulsion paint . All rates</p>	Sft	6500

		inclusive of scaffolding and tools and tackles required for the same.		
15	AC - High Side	Supply of Inverter type Cassette AC of 2.0 TR Capacity and 3 Star BEE Rated, 5 in 1 convertible, Anti Corrossive Blue Fins, 5 Years PCB Warranty and 10 Years Compressor Warranty. Make: LG/ Daikin/ Blue Star/ O General	No's	6
16	AC - High Side	Supply of Inverter type Split AC of 2.0 TR Capacity and 3 Star BEE Rated, 5 in 1 convertible, Anti Corrossive Blue Fins, 5 Years PCB Warranty and 10 Years Compressor Warranty. Make: LG/ Daikin/ Blue Star/ O General	No's	2
17	Low Side	Installation, Testing and Commissioning of AC Unit	No's	8
18	Low Side	Supplying & Laying extra suitable PVC Drain piping with all required material.	Mtrs	90
19	Low Side	Supplying & Laying extra suitable Copper refrigerant piping with all required material.	Mtrs	90
20	Low Side	Supplying & Fixing suitable MS Stand for outdoor unit	No's	8
21	Low Side	Electrical wiring between outdoor and indoor	Mtrs	90

22	Furniture	<p><b>SUPPLY AND INSTALLATION OF PENTAGON MODULAR WORK STATIONS:</b> The modular workstation shall be of size (1500 mm (W)+1350 mm(return) × 600 mm (D) × 750 mm (H) and shall consist of a sturdy CRCA steel frame with ergonomically designed work surface. The tabletop shall be made of 25 mm thick pre-laminated particle board of E2 grade conforming to IS 12823:1990, finished with 2 mm thick PVC edge banding (Rehau or equivalent) on all exposed edges.</p> <p>The supporting structure shall be fabricated from CRCA steel tubular sections comprising 60 × 40 × 1.2 mm thick horizontal members and 50 × 50 × 1.0 mm thick vertical members conforming to IS 1239:2004. All metal components shall be manufactured from 0.8 mm to 1.5 mm thick CRCA steel sheets conforming to IS 513:2008. The complete metal framework shall be treated and finished with electrostatic polyester powder coating of 60–70 microns thickness in approved shades such as Munsell Grey, Graphite Grey, or White.</p> <p>The workstation shall be provided with front and side privacy screen panels made of upholstered fabric-finished panels securely fixed to the structure. An integrated cable management system shall be provided below the worktop, comprising vertical cable ducts, horizontal cable trays/raceways, and a 2-way operable metal access flap (flip-up box) fabricated from 1.2 mm thick CRCA sheet mounted on the tabletop for convenient access to electrical and data points.</p> <p>The workstation shall also include adjustable nylon/PVC glides with height adjustment up to 15 mm to accommodate uneven flooring conditions. The complete workstation system shall be modular, sturdy, durable, aesthetically finished, and suitable for institutional/office use, complete in all respects.</p> <p>Approved Makes: Nilkamal / Featherlite / Godrej / Geeken.</p>	No's	24
----	-----------	--	------	----

23	Furniture	<p><b>SUPPLY AND INSTALLATION OF LINEAR MODULAR WORK STATIONS:</b> The modular workstation shall be of size 1200 mm (W) × 600 mm (D) × 750 mm (H) and shall consist of a sturdy CRCA steel frame with ergonomically designed work surface. The tabletop shall be made of 25 mm thick pre-laminated particle board of E2 grade conforming to IS 12823:1990, finished with 2 mm thick PVC edge banding (Rehau or equivalent) on all exposed edges.</p> <p>The supporting structure shall be fabricated from CRCA steel tubular sections comprising 60 × 40 × 1.2 mm thick horizontal members and 50 × 50 × 1.0 mm thick vertical members conforming to IS 1239:2004. All metal components shall be manufactured from 0.8 mm to 1.5 mm thick CRCA steel sheets conforming to IS 513:2008. The complete metal framework shall be treated and finished with electrostatic polyester powder coating of 60–70 microns thickness in approved shades such as Munsell Grey, Graphite Grey, or White.</p> <p>The workstation shall be provided with front and side privacy screen panels made of upholstered fabric-finished panels securely fixed to the structure. An integrated cable management system shall be provided below the worktop, comprising vertical cable ducts, horizontal cable trays/raceways, and a 2-way operable metal access flap (flip-up box) fabricated from 1.2 mm thick CRCA sheet mounted on the tabletop for convenient access to electrical and data points.</p> <p>The workstation shall also include adjustable nylon/PVC glides with height adjustment up to 15 mm to accommodate uneven flooring conditions. The complete workstation system shall be modular, sturdy, durable, aesthetically finished, and suitable for institutional/office use, complete in all respects.</p> <p>Approved Makes: Nilkamal / Featherlite / Godrej / Geeken.</p>	No's	72
24	Furniture	<p>Providing and Fixing Conference Table of Size L 2400 X W 900 mm Made up of 25mm PLPB Top with powder coated M S Understructure with electrical and networking provisions.</p>	No's	1
25	Furniture	<p>Providing and Fixing Conference Table of Size L 1800 X W 900 mm Made up of 25mm PLPB Top with powder coated M S Understructure with electrical and networking provisions.</p>	No's	1

26	Chairs	<b>MID BACK OFFICE CHAIR:</b> Supply and installation of mid-back ergonomic office chairs with a centre tilt synchro mechanism enabling smooth reclining and upright positioning for enhanced comfort during extended working hours. The chair shall feature a breathable mesh backrest for proper ventilation and 3D adjustable armrests with PU padding, allowing flexible positioning as per user requirements. The seating system shall be equipped with a 100 mm gas lift mechanism for precise height adjustment. The base shall be made of high-strength nylon in a five-star configuration to ensure durability and stability, fitted with 50 mm twin wheel nylon castors for smooth and scratch-free mobility. The overall chair dimensions shall be approximately 720 mm (W) × 720 mm (D) × 1090 mm (H), with a seating height of up to 560 mm. The chair shall conform to relevant BIFMA standards and be supplied in approved colour and finish. Approved makes shall include Godrej Interio, Nilkamal, Featherlite, or Geeken, or equivalent.	No's	108
<b>ELECTRIFICATION AND NETWORKING</b>				
27	Point Wiring	Providing wiring ( supply, fixing, testing and comm. etc) for light point / Exhaust fan point / Call bell point/6A Switch point etc with 2x1.5+1X1.5 sq mm FRLS PVC insulated copper conductor single core multi stranded wire and 1.5 sqmm PVC insulated copper earth wire with 25sqmm conduit.	No's	<b>35</b>
28	Point Wiring	Providing and fixing Secondray light point (Maximum three points to be looped from primary) With 25sqmm conduit.	No's	<b>25</b>
29	Raw Power Points	Providing wiring ( supply, fixing, testing and comm. etc) for 6A Switch-Socket Point etc with 2x1.5+1X1.5 sq mm FRLS PVC insulated copper conductor single core multi stranded wire and 1.5 sqmm PVC insulated copper earth wire with 25sqmm conduit.Make-ANCHOR ROMA /RR (MAT FINISH)	No's	<b>12</b>
30	Raw Power Points	Supply, fixing, testing and commissioning of 1 No 16 A switch & 1 No. six pin 6/16 Amp. Multi Socket ( Modular Type ) with cover plate , sheet steel box etc on surface / concealed manner I/c electrical wiring with 2 X2.5 sqmm + 1 X 2.5 sqmm FRLS PVC insulated copper conductor with 25sqmm pvc conduit.Make-ANCHOR ROMA /RR (MAT FINISH)	No's	<b>10</b>
31	AC Power Points	Supply, Installation, Testing and commissioning of the surface / recess mounting distribution board with 32A SWITCH And Socket ncl. wiring with 2 X 4.0 sq mm + 1 X 2.5sqmm PVC insulated copper conductor with 25mm pvc conduit. Make-ANCHOR ROMA /RR (MAT FINISH)	No's	<b>8</b>
32	Circuit Wiring	Supply and laying of copper flexible wire 2x2.5+1X2.5 sq mm FRLS PVC insulated copper conductor single core multi stranded wire.	Rmt	<b>380</b>
33	Circuit Wiring	Supply and laying of copper flexible wire 2x4+1X2.5 sq mm FRLS PVC insulated copper conductor single core multi stranded wire.	Rmt	<b>160</b>

34	Distribution Boards	Supply, Installation, Testing and commissioning of the surface / recess mounting following way ETPN MCB Single phase distribution board for Three phase outgoing with IP 42 protection , direct on wall incl. the followings accessories. Make-LEGRAND / SCHINDLER / SIEMENS	No's	2
		INCOMER		
		63A TPN MCB- 1 NO. C Curve		
		OUTGOINGS		
		32A TPN MCB 2 NO.		
		40A DP MCB 2 NO.		
		SET AS ABOVE		
35	Distribution Boards	POWER DISTRIBUTION BOARD	No's	2
		Supply, Installation, Testing and commissioning of the surface / recess mounting following way TPN MCB three phase distribution board for single phase outgoing with IP 42 protection , direct on wall incl. the followings accessories. Make-LEGRAND / SCHINDLER / SIEMENS		
		INCOMER		
		32A TPN MCB 1 NO. C Curve		
		OUTGOINGS		
		6A SPMCB 9 NO.		
		16A SPMCB 9 NO		
		SET AS ABOVE		
36	Distribution Boards	U.P.S. DISTRIBUTION BOARD	No's	2
		Supply, Installation, Testing and commissioning of the surface / recess mounting following way Double door MCB D.B.- Single phase distribution board ( Consumer unit ) for single phase out going with IP 42 protection incl. the followings accessories – incl. Electrical connection ,earthing, making good all the damages, painting, cleaning the site, etc complete as per site requirement and as directed. Make-LEGRAND / SCHINDLER / SIEMENS		
		INCOMER		
		40A DP MCB 1 NO.		
		OUTGOINGS		
		16/25A SPMCB 10 NO.		
		SET AS ABOVE		
37	UPS Power Point	SPECIAL POINTS: ( UPS)	No's	2
		Supply, fixing, testing and commissioning of following Modular type switch socket with cover plate , sheet steel box etc on surface / concealed manner I/c electrical wiring with 2 X 2.5 sq mm + 1 X 2.5 sq mm FRLS PVC insulated copper conductor single core multi stranded wire in rigid 25MM PVC conduit		
		2 Nos. 16 A Switch + 3 Nos. 6 A, 5 pin Socket.		
38	Data Points	COMPUTER POINT : I / O's :	No's	115

		Single outlet with shutter modular type I / O's Outlets ( RJ – 45 ) with suitable size PVC modular boxes complete as required. Make-D-LINK		
39	Telephone Points	TELEPHONE POINT :	No's	10
		Single outlet with shutter modular type Telephone Outlets ( RJ – 11 ) with suitable size PVC modular boxes complete as required. Make-D-LINK		
40	Data Works	Providing & Laying of Cat - 6A+ for Data / Voice wire through Alu. Channel / PVC Pipe - D Link Make	Rmt	2900
41	Data Works	Supply and Installation of following factory fabricated patch cords ( UTP-CAT 6 ) complete with connectors and boots on both sides- Two Meter length	No's	110
42	Data Works	Supply and Installation of 24-Port Cat6 Unshielded Wallmount or Rackmount Patch Panel,	No's	6
43	Data Works	Supply and Installation of Patch cord cat6 1 metre B/Y Color	No's	110
44	Data Works	Supply and Installation of 22 U rack with exhaust fan	No's	1
45	Attendance Device	Cloud-Based Biometric Attendance Device   Fingerprint + Card + Wi-Fi + Battery Backup   Office Attendance Machine	No's	2
46	Main Cabling	L.T.CABLES :		
		Supply,laying ,testing and commissioning of the following 1100 volt grade pvc insulated Al / Cu. Conductor armored cable inner and outer sheathed , along with the two run of G.I.earth wire i/c termination with brass gland and Al. lugs etc. complete as required.		
		3.5CX 25 SQMM Aluminium armoured cable	Rmt	100
		3CX 6 SQMM Copper Flexible cable	Rmt	100
47	Light Fixtures	<b>LED FIXTURES:</b> 40 W, 2 X 2 Light Fixture - Philips, Crompton, Havells or Wipro	No's	35
48	Light Fixtures	<b>LED FIXTURES:</b> 20 W, Minimum 80 lumens/ Watt LED ROUND DOWN LIGHTER - Philips, Crompton, Havells or Wipro	No's	10
49	Light Fixtures	<b>LED BATTEN:</b> 1 x 20W LED tube fixtures with integrated driver unit. Complete assembly with 3 years unconditional replacement warranty.	No's	10
50	Wall Fans	<b>WALL BRACKET FAN:</b> Supply and fixing of the following fans Wall bracket fan white- 400 mm - Crompton/ Havells/ Bajaj	No's	5
51	Exhaust Fans	<b>EXHAUST FAN:</b> Supply and fixing of the following single phase 300 dia Exhaust fans - Crompton/ Havells/ Bajaj	No's	5
52	PVC Trench	Providing & Fixing of 2" x 2" PVC Cassing Patti. ( 60 x 45 mm Pvc Trench )	Rmt	150
53	CCTV System	2 MP Full HD IR Dome Day & Night vision indoor Camera, Hikvision / CP plus / Sony/ MI make	No's	12
54	CCTV System	Standalone 32 Channel 4K NVR, 2 TB x 2 surveillance hard disk,CIF Real-Time, 2 SATA interface, LAN, VGA	No's	1
55	CCTV System	Hard Disk - 4TB	No's	1
56	CCTV System	RJ 45 Connector	No's	24

57	CCTV System	8 port Network POE Switch	No's	<b>1</b>
58	CCTV System	Monitor P& F Monitor Screen 19.5"	No's	<b>1</b>

## TECHNICAL SPECIFICATIONS FOR INTERIOR WORKS

Note: Product with ISI stamp shall have to be provided where available. In case of non-availability of such stamping for a particular product, Architects / Employer's decision as per list of material or otherwise shall be final & binding.

### 1. **WOOD WORK** (All wood should be S Q Treated)

- i. **Teak Wood:** Teak wood shall be of the best quality available in India. It should be well seasoned and free from sap, knots, warps, cracks and other defects. All wood work shall be planed neatly and truly finished to the exact dimension. All joints shall be neat and strong, truly and accurately fitted and glued before being fitted together.
- ii. **Veneers and Plywood:** The veneers and the ply wood shall conform to the IS : 851 and IS:303 respectively. It shall be resin bonded suitable for intended use. The Contractor shall submit approved samples at the Architect / Owner site office.
- iii. **Phenol Bonded Block Board:** Commercial ply wood, decorative ply wood conforming to IS:303/1975 bonded with phenol formaldehyde synthetic resin of B.W.P. type as specified in IS:848/1974 of approved make should be used.
- iv. **Phenol Bonded Block Board:** Commercial block board conforming of IS:1659/1979 bonded with phenol formaldehyde synthetic resin of IS:840/1974 of approved make should be used.
- v. **Phenol Bonded Teak Particle Board:** Commercial particle board conforming to IS: 3097-1980 exterior grade bonded with BWP type phenol formaldehyde synthetic resin. All edges of the particle board to be painted with one coat of chlorinated paint of approved shade, make and quality. The particle board should be of approved make.
- vi. **Phenol Bonded Prelaminated Particle Board:** Prelaminated particle board should be 3 layered melamine faced conforming to IS:12823 of latest edition. This should also conforms to DIN:68765 NEMA LD-3 and BIS License IS-3087 for plain particle board. All edges of the board to be painted with one coat of chlorinated paint of approved shade, make and quality. The prelaminated particle board should be approved make with ISI mark.
- vii. **Decorative Laminates:** Laminate sheets shall be 1 mm or 1.5 mm (as per design requirements) or as specified in the respective items) thick with  $\pm 0.127$  mm tolerance and obtained from any of the following approved manufacturers e.g. Formica, Decolam, Merino and Greenlam & samples should have approval of the Architect / Employer.
- viii. **Wooden Flush Shutters(Solid Core Type):** Solid core flush shutters shall be commercial or teak veneered type as specified in the item of approved manufacturer registered with ISI and shutter shall bear ISI mark. An approved sample shall be deposited in the office of the Owner / Architect at site for reference. The shutter will be provided with lipping. Finished thickness of the shutter shall be as mentioned in the item. Shutter should be hot pressed and phenol formaldehyde should be used as glue.
- ix. **Hardware Fittings:** All hardware fittings for doors shall be either Stainless Steel, brass, anodized aluminium as specified in the schedule of quantities. These hardware fitting shall be obtained from approved manufacturers and shall bear ISI mark wherever available. The samples for the fitting shall submitted to the Owner / Architect for their approval. Hardware fittings for door shutter shall be paid in door shutter item or separately as given in schedule of quantities. No separate payment shall be made for hardware fittings if not mentioned otherwise in the

schedule of quantities. The rate for hardware fittings shall include for supplying, fitting and fixing the fittings with necessary provided with keys in duplicate and rate shall include for the same.

***Approved samples of hardware fittings shall be deposited with Owner / Architect for reference.***

#### Workmanship

- a) The workmanship shall be first class and to the approval of the Owner /Architects. Scantlings and board shall be accurately sawn and shall be of required width and thickness. All carpenter's work shall be wrought except where otherwise described. The workmanship and joinery shall be accurately set out in strict conformity according to the drawings and shall be framed together and securely fixed in approved manner and with properly tanned shouldered, wedged, pinned, braced etc. and properly glued with approved quality glue to the satisfaction of the Owner / Architect.
- b) Screw : Unless otherwise specified all screws to be used in woodwork and journey shall be of Stainless Steel and of approved quality. The size (diameter and length) should conform to those specified in hardware schedule.
- c) Tolerance : 1.5mm (1/16") will be allowed for each wrought face of sizes specified except where described as finished in which case they shall hold to the full dimensions
- d) Protection : All edges of timber frames etc. shall be protected from being damaged during construction by providing rough timber casing securely fixed and other adequate protective measures.
- e) If it is decided by the Owner to provide antitermite treatment, the building Contractor shall co-ordinate his work suitably as directed by the Owner / Architects.
- f) Door / Window frames shall have cut rebate. Planted rebates shall not be permitted.
- g) Where door frames are fixed flush with plaster to wall, teak wood cover Mould 40 x 12 mm as per drawings shall be provided all round and shall be painted or polish finished to match with finished shutters. This will be paid as a separate item as described in Schedule of Quantities.

#### Rates to Include :

Apart from other factors mentioned elsewhere in this contract the rate for item of wood work and journey shall include for the following –

##### A. Items of scantling :

- i) All labour, materials and equipments for fixing frame work as per drawing excluding the cost of holdfasts, Rawl Plugs or other fasteners etc.

##### B. Items of shutters :

- i) All labour, materials, hardware fittings and equipments for carrying out the work as per drawing.
- ii) Labour for fixing the shutters in position (excluding cost of fittings) as per drawing.

#### Mode of Measurement

All measurements shall be as per relevant section of I.S. 1200 of latest edition.

- i) Scantling shall be measured in cum. The sectional area shall be the area of the least square, or rectangles from which the scantling may be cut. The length shall be actual length of timber required for the purpose including the extra portion required for jointing.
- ii) Shutting shall be measured in square metre for closed door shutters area i.e. rebate to rebate without extra measurement for rebates and/or splayed meeting styles of door.

## 2. PLASTIC EMULSION PAINT

**Material :** Wall painting with premium acrylic emulsion paint of interior grade, having VOC (Volatile Organic Compound) content less than 50 gms/ L of approved brand and manufacture, including applying additional coats where ever required.

**Scaffolding:** This shall be double or single as required and directed. If ladders are used, pieces of gunny bags or cloth bags shall be tied on their tops to avoid damage or scratches to the plastered surfaces etc. proper stage scaffolding shall be erected when painting the ceiling.

**Preparation of the surface:** The surface to be painted shall be cleaned and all cracks, holes and surface defects shall be repaired with plaster of paris for spot filling, and with filler prepared with whiting, water and a little quantity paint for filling and leveling the wider areas.

**Priming Coat:** The priming coat with primer of approved brand and manufacture having low VOC (Volatile Organic Compound) content.

**Application of Emulsion Paint:** The recommendation of approved paint manufacturer whose product it used, shall be followed regarding the preparation of the surface and the application of the priming and finishing coats. The contractor shall arrange for technical assistance and supervision from the paint manufacturer, during the execution of the painting work. After the priming coat has been applied and perfectly dried, all holes, scratches, if any, shall be repaired as mentioned in 'preparation of surface' and then the second coat of approved shade and manufacturer shall be evenly applied and allowed to dry. The third coat shall be carefully applied to achieve smooth and even surface after the previous coat has dried up. Minimum 3 coats of paint shall be applied inclusive of primer coat. If a proper and even surface is not obtained to the satisfaction of the Owner / Architects in 3 coats, Contractor shall carry out additional coats of painting to approval at contractor's expenses. Care shall be taken that dust or other foreign materials do not settle or disfigure the various coats.

### Rates to include

Apart from other factors mentioned elsewhere in this contract, the rates for the item plastic emulsion paint shall include for the following :-

- i) All labour, materials and equipment necessary to carry out the work.
- ii) Supplying the approved emulsion paint for priming and finishing coats.
- iii) Preparing the surface for receiving the primer and finishing coats.
- iv) Scaffolding including its erections and dismantling.
- v) Application of one primer coat and minimum two coats of finishing. If a proper and even surface is not obtained to the satisfaction of Owner / Architect in 3 coats mentioned above, the contractor shall carry out additional coats of painting to approval at contractor's expense.

- vi) Protection to painted surface till dried and handed over.
- vii) Expense, if any, for supervision and technical assistance supplied by the approved paint manufacturers.

### **Mode of Measurement**

The measurement shall be in square metre. The mode of measurement shall be as per relevant section of I.S.:1200 of latest edition.

### **3. MELAMINE COATING**

The materials shall be of approved brand for wood finish. The application has to be made using sprayer and as per manufacturer's specification.

The surface to be used shall be sand papered using Emery Paper No. 180 or any suitable grade along the grains. After brushing the surface free of loose dust, wood filler shall be applied. Excess filler shall be removed immediately. Allow a gap of 1 hr. if second coat is required. On drying of the filler, after 8 hrs. the surface is to be sand papered again with Emery paper no. 180/220 and the surface is brushed free of loose dust. Sealer coat as per manufacturers specification is then applied in two coats & then sand papered with emery paper no.240 & finally emery paper no.400 & clean thoroughly. Final finish coat is then applied on the finished surface after mixing the base and hardner in a container and allowing the mix to stand for 30 minutes filtered and then applied.

#### **Rates to Include**

- i) Similar to that of painting including cost for applying by spray machine.

#### **i. N.C. LACQUER**

N.C. lacquer should be of approved brand & quality, approval of Architects is obligatory.

Before application of N.C. lacquer, the surface is to be polished using white lac only. The surface should be highly polished as per desired shade. Filler used during polish should be N.C. putty only. N.C. lacquer shall be applied under spraying machines using 1:1 (N.C. lacquer to N.C. thinner ) on dust free surface and shall be allowed to dry for minimum 12 hours in fair weather condition. The drying time may have to be increased in moist atmospheric condition. After drying, the lacquered surface should be rubbed with muslim cloth. No other treatment on the lacquered surface should be made once it is completed.

- i) Rates to Include: Similar to that of painting.
- ii) Mode of Measurement: Similar to that of painting.

#### **ii. GLASS**

Glass used shall be clean and/or tinted float or toughened as mentioned in the Schedule of Quantities and of the best quality approved by Architect / Employer without any scratches, bubbles, specks, waviness, undulations or any other defects, unless otherwise specified, all glass shall be as shown on the drawings. The glass used be toughened glass with beveled edges, etchings etc. including accessories such as SS patch fittings, SS handles, lock etc as per requirement and indicated in the drawings and BOQ and is to be got approved by Architect / Employer. Glass shall be well protected from any damage during transportation, storage and progress of work. Any glass which in the opinion of Architect / Employer is

not suitable for work shall be rejected and the contractor shall replace the glass with an approved one.

### iii. LOOSE FURNITURE

The contractor shall make one sample of each furniture item as per drawing and specification provided by the Architect for the final approval of the Architect / Employer. The bulk production can be taken in hand as soon as the sample is approved and finalized. No extra charges shall be payable for any alternation / modification done in the sample furniture item and also for rejected samples. All upholstery work is to be done in the best workmanship manner to the entire satisfaction of the Employer / Architects. The decision taken by the Architects for the approval of the sample shall be final and binding on the contractor. Brass or aluminium cushion vents to be installed at the back seat or underside of seat cushion as per direction of the Employer / Architects and contractors' quoted rates should include the same.

### iv. CHAIRS

All cantilevered chairs have slightly reinforced tubular structure to resist static and impact loads inflicted on the same in day to day use. The tubular frame work is to be made strong and resilient to ensure that the same does not loss its shape after prolonged use as it often happens in case of cheaper chairs of others make. The above is to be achieved by using 25 mm steel tubing of 1.6mm thickness. Additional tubes of slightly lower diameter and the same thickness are used as inserts for providing reinforcement at all 4 bends of the chair. Wooden seats, backs, armrests, plastic canes and cushions, 100% inspection of wood components should be arranged to ensure that the quality of the wood used is as per the specifications.

### v. FALSE CEILING

#### Grid Ceiling

Sillhouette Tee Grid suspended ceiling system with 14 x 35x 0.30, 3000mm long Main Tee galvanized steel ' T ' Section frame work of hot dipped galvanized steel precoated, which includes flush fitting, 14 x 35 x 0.30, 1200mm long cross tees to be interlocked between main runners at 600mm centres to form 1200 x 600 modules. Cut cross tees longer than 600mm to be supported independently. 600 x 600 modules to be formed by fitting 14 x 35 0.30, 600mm long flush fitting cross tees centrally between the 1200mm cross tees to lay in 15mm thick Sky Fissured/Star Pin/Sand Texture Microlook Edge ceiling tiles. (Make: Aerostone, Armstrong)

OR

24 mm Tee grid suspended ceiling system with 24 x 38 x 0.30, 3000mm long Main Tee galvanized steel ' T ' section frame work of hot dipped galvanized steel precoated, which includes flush fitting, 24 x 26 x 0.30, 1200mm long cross tees to be interlocked between main runners at 600mm centres to form 1200 x 600 modules. Cut cross tees longer than 600mm to be supported independently. 600 x 600 modules to be formed by fitting 24 x 26 x 0.30, 600mm long flush fitting cross tees centrally between the 1200mm cross tees to lay in 15mm thick ceiling tiles Sky Fissured, Star Pin Texture-square Edge & Tegular Edge as per requirement. (Make: Aerostone, Armstrong)

OR

15 mm Tee grid suspended ceiling system with 15 x 33 x 0.30, 3000mm long Main Tee galvanized steel ' T ' section frame work of hot dipped galvanized steel precoated, which includes flush fitting, 15 x 33 x 0.30, 1200mm long cross tees to be interlocked between

main runners at 600mm centres to form 1200 x 600 modules. Cut cross tees longer than 600mm to be supported independently. 600 x 600 modules to be formed by fitting 15 x 33 x 0.30, 600mm long flush fitting cross tees centrally between the 1200mm cross tees to lay in 15mm thick ceiling tiles Sky Fissured, Star Pin Texture-square Edge & Tegular Edge as per requirement. (Make: Aerostone, Armstrong)

#### 4. Gypsum Board Ceiling

Suspended Gypsum Board ceiling which includes G.I. Perimeter channels of size 0.50mm thick having one flange of 20mm and another flange of 30mm and a web of 27mm along with perimeter of ceiling, screw fixed to brick wall / partition with the help of nylon sleeves and screws, at 610mm centers. Then suspending G.I intermediate channels of size 45mm, 0.9mm thick with two flanges of 15mm each from the soffit at 1220mm centers with ceiling angle of width 25mm x 10mm x .50mm thick fixed to soffit with G.I cleat and dash fasteners. Ceiling section of 0.50mm are then fixed to the intermediate channel with the help of connecting clip and in direction perpendicular to the intermediate channel at 457mm center. 12.5mm tapered edge Plaster Gypsum GRG (Glass Fiber Reinforced Gypsum) is then fixed to ceiling section with 25mm drywall screws. Finally the boards are to be jointed and finished so as to have a flush look which includes filling and finishing the tapered and square edges of the boards with jointing compound, Joint Fiber tape and a coat of drywall top coat. (Framework and Board make: Aerostone, Gypsum India)

#### G.R.G. Ceiling

**Composition:** The GRG range of ceiling tiles are manufactured from glass reinforced gypsum and comprise non-combustible gypsum casting plaster reinforced with a glass fiber membrane resulting in a light weight, strong and prestressed panel.

**Surface Finish :** The plaster should have silky smooth or textured moulded finish.

**Dimensions:** All designer tiles are to be designed for installation on a standard 600 x 600mm moulded 24mm table exposed metal grid and are precision made to within plus or minus 0.25 mm.

#### Fire Performance

**Non combustibility :** GRG tiles are rated non-combustible as defined in BS 476 : Part – 4:1970.

**Surface Spread of Flame :** GRG tiles are rated Class I for surface spread of flame to BS 476 : Part – 7:1987.

**Fire propagation :** Test results to BS 476 : Part 6 : 1989 indicate a Class 0 surface.

**Smoke and toxic fume emission :** The tiles are zero rated for smoke emission. No toxic fumes are given off.

**Humidity Resistance :** The tiles have excellent moisture resistance and can be used in areas of high humidity including covered external areas, kitchens and bathrooms. Tested in an atmosphere of 95% R.H. at 21 Degree C for 14 days, the tiles did not sag or distort and showed only a minimal increase in weight.

Unlike most other ceiling materials, this important attribute can often be used to speed up the building program by installing the ceiling before the building is full weathertight.

Biological : GRG tiles will not support the growth of bacteria or other micro – organisms.

Lifespan: Under normal conditions GRG tiles will not deteriorate and can be expected to last the lifetime of the building.

Suspension system is standard 24mm table exposed metal grid. GRG exposed metal grid systems are designed for maximum strength. The grid features main runners and cross tees performed from galvanized steel to RS 7989 7 – 18 zinc coating min tensile strength 270 Mps. Grid systems are designed to satisfy ASTM C635 loading and deflection criteria. The main and cross runners are provided with beyonet couplings for brick installation. The runners are pre-slotted to variety of layouts. Main and cross runners are provided with a coil coated steel capping on the exposed table in off-white colour. Cappings in other colours are available on request.

Grid system features main and cross tees 38 mm high. The grid is suspended from the roof with GI wire roads of quick adjustment suspension hangers at maximum 1200 mm along the main runners.

GRG tiles are designed for lay-in mounting from below into standard grid.

Tiles grid suspension systems are made in association with Chicago Metallic, Belgium.

### **Site Work**

#### **a)Transport, Handling and Storage**

GRG tiles are supplied packed in cardboard carton. Cartons should be transported and stacked in the vertical position only, never flat. The stack should be a maximum of three cartons high. Similarly, tiles should be stacked vertically when awaiting fixing.

#### **a) Installation**

Main tees should normally be fixed at 1200 mm centers with hangers every 1200 mm along the length of the tee. The tees would be infilled with 1200 mm and 600mm criss tees. The grid manufacturer's recommendations should be followed at all times. Hangers to be fixed to roof by expansion fasteners.

For light fittings, grills diffusers and cutouts etc. have to be provided additional members of frame works as per direction of Architects / Employer.

Mode of Measurements : The measurement shall be square metres for the finished exposed area.

Rate to include : Apart from other factors mentioned elsewhere in this contract, the rate for items of false ceiling work shall include - all labour, materials, equipments, scaffolding, hardware fittings, etc. for carrying out the works as per drawing.

### **STANDARD SPECIFICATIONS**

Unless otherwise specified elsewhere in this contract, all work under this contract shall be carried out in accordance with the technical specification and the latest issue of the Indian

Standard Specification applicable to the particular class of work. If Indian Standard are not formulated for any particular material of work, the relevant British Standard Specification shall apply. Relevant issue of I.S. specifications applicable to the particular work have been described along with the specification for the respective works. In case of any confusion or dispute regarding the meaning and interpretation of any specification for the respective works, the decision of the Owner / Architects shall be final and binding on the contractor.

## 5. PARTITIONS

### Frame Work

Framework to be made in 50 x 50 mm wooden frame of Mirandi/chap/Kail/Malasian Sal, Vertical frame to horizontal members and placed at a maximum of 600mm c/c both ways. The frames shall be securely fix to walls, floor, ceiling complete in all respect including making provisions for electrical conduits etc. and two coats of approved primer and fire retardant paint. As per drawing and specifications and direction of architect / C-DAC including Providing and fixing framing both side with 6 mm thick BWR grade ply board finished with 1 mm thick decorative laminate of approved shade and make as per design with moulding on edges. Rubber wood edging and molding as per design & sizes complete in all respect including polishing of wooden surface in natural shade with melamine.

OR

Modular Partitions will have a thickness of 40mm and the width and height will be as per drawing & specifications. The vertical members will be made from 40 x 40 x 1.2mm M.S. pipes and the horizontal members from 40x20x1.52 mm M.S. pipes.

Low height partitions will be free standing and self-supporting. In full height partitions the vertical members will be jacked under tension to the main ceiling / beam bottom (as the case may be). Both, low height and full height partitions will be provided with leveling systems to adjust the partitions to unevenness and differences in floor ceiling levels.

### Skirting

Low Height Partitions will be provided with a box type skirting raceway for wire management, either along the base and/or at table height as per drawing. The skirting will have a height of 20 swg M.S. sheet. There will be an openable cover on one side for easy access to carry out electrical installations and maintenance.

In full height partitions, the skirting cover will have a height of 120mm and a thickness of 40mm. The skirting will be approachable from both sides and will have channels for adjustment for floors. Box type raceway can be provided at table height.

OR

Oak Veneer MDF skirting size 120 mm x 15 mm is available in length of 1800 mm and 2400 mm. These skirting are ready finish and fixed to wooden partition with proper adhesive medium and nails.

### Doors

Flush doors are in ply fixed together by adhesive and nails with cutout and design as per drawing. Necessary fitting like hinges, door lock, handles, door stopper, tower bolt, etc to be provided as per detail and finishes in approved laminate or veneer with melamine polish.

### Finishes

Partitions and Doors are available within fill panels in the following finishes:

- a) P.F. bonded exterior grade Pre-laminated board of 8mm thickness (on both sides)
- b) Fabric clad softboard of 12mm thickness (on both sides)
- c) Glass of 6mm thickness in clear or tinted, as specified.
- d) Wood veneer of 3.5mm thickness, as specified.

Various combination of the above finishes on all the sides can be provided as specified by the Architects / Employer.

All the in-fill panels in doors and partitions are fitted by using aluminium profiles and PVC extrusions are used as trimmings. Phenol formadehyde bonded exterior grade prelaminated boards shall be of any shade as per drawing and direction.

All metal sections, fabricated M.S. components and aluminium profiles are finished in epoxy powder coating of a thickness 50 microns. The standard shades are Grey, Black and Brown or as specified by Architect / Employer.

### **Table and Work surfaces**

Table will be comprised of:

- a) Table Top : Fabricated out of 18mm particle board finished with 1.5mm laminate on top. The top shall be supported by a frame fabricated out of 25 x 025 x 1.2 mm M.S. pipe and 25 x 25 x 1.2 mm M.S. angle for additional strength. The frame will have the necessary provisions for suspending drawer units and fixing of sides.
- b) Modesty Panel (Apron) will be fabricated out of 18mm P.F. bonded exterior grade. prelaminated particle board duly lipped with necessary knock-down fittings to fix the two sides.
- c) Board side will be fabricated out of 18mm P.F. bonded exterior grade prelaminated particle board duly lipped with necessary hardware for fixing.
- d) Metal side will be fabricated out of 25x25x1.2 mm M.S. pipe with necessary hardware for fixing the same.

All board component tops, sides etc. are finished with laminate of approved shade, quality & thickness. All the edges are to be chamfered at 45 degree.

The distribution of components in various tables / work surface is as follows :

- a) Board Side Table : will consist of a top, two board sides and a modesty panel.
- b) Metal Side Table : will consist of a top, 2 metal sides and a modesty panel.
- c) Table Board / Metal Side : will consist a top, 1 board side, 1 metal side and a modesty panel.
- d) Table with 1 Board / Metal Side will consist of a top, 1 metal/board side and the other side will be anchored to the partition.
- e) Work Surface : Only the top will be anchored on both sides to the partition. It will also be provided with end metal at board side as per Architect / Employer's requirement.
- f) Corner Work Surface will be attached to the frame of work surfaces / tables. It will consist of a top and metal / board side in the case of an independent work surface.

### **Drawer Units**

- a) **Suspended Drawer Unit** : The drawer facia is to be fabricated out of 18mm P.F. bonded exterior grade prelaminated particle board. The sides are fabricated out of 18mm thick P.F. bonded exterior grade prelaminated particle board. The top, bottom and back are fabricated out of 8mm P.F. bonded exterior grade prelaminated particle board.

The drawers are to be fabricated out of M.S. sheets and assembled with drawer runners for smooth operation. A single central locking system is to be provided. The drawers are available in two types viz. 2D and 3D. All metal components will be finished in black epoxy coating.

- b) **Mobile Drawer Unit** : The facia, top and sides will be fabricated out of 18mm thick P.F. bonded exterior grade prelaminated particle board. The back will be of 8mm thick P.F. bonded exterior grade prelaminated particle board. These will be fitted to the frame fabricated out of 25 x 25 x 1.2 mm pipe fitted with lockable castors. The drawers will be similar to suspended drawer units. All Metal Components will be finished in black epoxy powder coating and are. Available in three types viz. 2D, 3D and 4D.
- c) **Pencil Drawer** : will fabricated out of M.S. sheets and the facia will be made of P.F. bonded exterior grade prelaminated particle board of 18mm thickness. The smooth movement will be ensured by drawer runner (The pencil drawer will not have a lock and handle) and all metal components will be finished with black epoxy powder coating.
- d) **Key Board Drawer** : will be fabricated entirely out of M.S. sheet. It has an ergonomical tilting and table mounting adjustment. The key board drawer moves drawer runners for smooth operation and is not provided with a lock. Finishing will be in black epoxy coating.

### **Vertical Storage Unit**

All components – top, bottom, sides, shutters and shelves are fabricated out of 18mm thick P.F. bonded exterior grade prelaminated particle board and the back of 8mm thick P.F. bonded exterior grade prelaminated particle board. Will be mounted on a 150mm box stand fabricated out of M.S. sheet with a system for leveling and the necessary knock down fittings, lock and stoppers will be provided.

All board components edges are finished in laminates and chamfered at 45 degree.

The top is finished with laminate. The top, bottom and sides are to be fabricated out of 18mm thick P.F. bonded exterior grade pre-laminated particle board with necessary knock down hardware fittings.

The Shutter is fabricated out of 12mm thick P.F. bonded exterior grade prelaminated particle board with necessary wheels for easy sliding of the shutters.

The back is fabricated out of 8mm thick P.F. bonded exterior grade prelaminated board.

It is mounted on a 150 mm box stand fabricated out of M.S. sheet with a system for leveling.

LIST OF APPROVED MAKE

LIST OF APPROVED MAKES OF MATERIALS		
S. No.	Material	Approved make
<b>A</b>	<b><u>Interiors</u></b>	-
1	Wood	Teak wood/Steam beech wood/ Salwood/ Red merandi or equivalent
2	Ceramic tile	Nitco/Kajaria/Asian/ HR Jhonson or equivalent
3	Vitrified tile	Nitco/Kajaria//Asian/ HR jhonson or equivalent
4	Gypsum Board	India Gypsum Ltd / Saint Gobain or equivalent
5	Grid ceiling	Armstrong/USG/AMF or equivalent
6	Laminate	Merino / Greenlam / National/ Green / Timex or equivalent
7	Plywood	Greenply-Ecotec / National / Samrat/Kitply/CENTURY-SAINIK or equivalent
8	Door closers	Ozone /Enox / Doorline/ Godrej or equivalent
9	Floor spring/Patch fittings	Ozone / Enox / Door line/Godrej or equivalent
10	Melamine Coat	Asian ,ICI , ICOS or equivalent
11	Paints	Asian paints (Royale)/ ICI Dulux / Berger or equivalent
12	Adhesive	Fevicol SH, Araldite or equivalent
13	Mortise locks	Godrej /Dorset / Enox or equivalent
14	Hardware fittings such as Knobs,Hinges,Tower bolts,Castors etc.	Dorset /Enox /Ozone / Doorline / Godrej or equivalent
15	Lighting & fitting	Wipro philps bajaj syska
16	Vertical Blinds	Vista / Mac /Jhonson or equivalent
17	Roller blinds	Vista / Mac /Jhonson or equivalent
18	Vinyl flooring	Armstrong/ Responsive or equivalent
19	Carpet	Interex /C.C.Carpet / Shawmark / Standard or equivalent
20	Plain/Tinted glass	Saint Gobain/Modi guard or equivalent
21	Mirror	Modiguard / Saint Gobain or equivalent
22	Chairs/Modular furniture	Methodex or equivalent
23	TV-Display	Samsung / Sony
24	Sink	Nirali or equivalent
25	PLUMBING	JAQUAR, HINDWARE, ROCA / PARRYWARE, RAK CERAMICS
<b>B</b>	<b><u>Modular Furniture</u></b>	<b><u>Godrej/Methodex/Nilkamal/Featherlite/Geeken - makes for modular product</u></b>
1	Prelaminated MDF Board	Action-Tesa
2	Prelaminated Particle Board	Action-Tesa
3	MDF Board	Action-Tesa
4	Particle Board	Action-Tesa
5	Laminate	Marino
6	Edge Band	Rehau
7	Fabric for notice board	Response
8	Aluminium Frame and panels	Hindalco
9	Powder Caoting	40 to 50 micron
10	CRCA Frame, sheet and panels	Jindal, Tata

11	Hardware and Accessories like, D-Bracket, Handles, Hinges, Sliding channel, lock. etc	Ebco
12	Pop up box	Legrand
13	Flip Cover	Ebco
<b>C</b>	<b><u>Electrical Work :List of Approved Makes</u></b>	
1	M.C.B / M.C.C.B / E.L.M.C.B	Legrand ( M.D.S / Merlin Gerin) ,L&T, Siemens, / Havells or equivalent
2	Wires ( FRLS )	Polycab / Finolex / Havells or equivalent
3	Cables	Polycab / Finolex / Havells or equivalent
4	Conduit ( PVC )	Precision, Polycab, AKG or equivalent
5	Conduit ( MS )	AKG / BEC or equivalent
6	Switches and Sockets	Anchor ,Roma,Havells , Legrand or equivalent
7	Wall Mounted & Ceiling Fans	Crompton ,Havells, Usha, Polycab or equivalent
8	Telephone wires & Cables	Polycab / Delton or equivalent
9	Tube / Bulbs / Pl Tubes	Philips / Bajaj or equivalent
10	Flexible Wire for Speaker	Polycab / Finolex or equivalent
11	Switchgear Equipment	L & T / Siemens / Havells or equivalent
12	Aluminium Trunking Pipe / junction boxes	Jindal/ Hindalco/ Tata or equivalent
13	P. A System	Philips / Sony or equivalent
14	Emergency Lighting System	Panasonic / Orpat / Bajaj or equivalent
15	Lighting Fittings	Wipro / Philips /Bajaj / Syska / Orient or equivalent
16	Distribution Board	Legrand / Havells / L & T / Hager / ABB or equivalent
17	Main Panel / Sub Main Panel	Locally Fabricated
18	On Load Change Over Switches	Havells/ L & T/Siemens/ ABB or equivalent
19	Thimbles and Lugs	Dowells/Asian or equivalent
20	Cable Glands	COMET / MMI or equivalent
21	Motor Starter	L & T or equivalent
22	CCTV/Fire alarm	CP Plus/Hikvision/Mi/Methodex
<b>D</b>	<b><u>ELECTRICAL &amp; ALLIED WORKS</u></b>	
	<b>CABLES &amp; ACCESSORIES</b>	
1	CABLES	POLYCAB/KEI
2	CABLE LUGS/GLANDS	DOWELL/JAINSON/SEIMENS
3	CABLE TRAYS	PROFAB/ASIAN/UNIVERSAL/ PRE-APPROVED
	<b>WIRES &amp; ACCESSORIES</b>	
1	SINGLE CORE WIRES	POLYCAB/KEI
2	THREE CORE FLEXIBLE WIRES (BLACK & WHITE)	POLYCAB/KEI
3	CONDUIT PIPES & FITTINGS (PVC)	AKG/BEC/PRECISION/ DIAMOND
4	SWITCHES/SOCKETS	ANCHOR ROMA/NORTH WEST VENA/HAGAR/GREATWHITE/PREAPPROVED

5	METAL CLAD SOCKETS/IEC TYPE PLUG-SOCKETS	NEPTUNE BALLS/CROMPTON/MDS/HAGER/CLIPSAL
	<b>LIGHT FITINGS/FIXTURES</b>	
1	LED FITTINGS	WIPRO/LEGERERO/HAVELLS
2	LED SPOT LIGHTS	WIPRO/LEGERERO/HAVELLS
3	DECORATIVE LIGHTS	WIPRO/LEGERERO/PRE APPROVED
4	FANS(CEILING/EXHAUST)	CROMPTON/ORIENT/RALLIS/KHAITAN/NEWTEC/ GEC
	<b>DB &amp; MCB</b>	
1	MCCB, MCB, DB, RCBO, ELCB	ABB, L&T, EGRAND,
2	LT PANELS	PRE APPROVED
	<b>Fire Alarm System</b>	
1	Conventional Fire Alarm System	Ravells/ ( UL Listed) / Agni
2	Fire Extinguisher	SAFEX /KANEX/SAFEPRO
	<b>UPS SYSTEM</b>	
1	UPS SYSTEM	EMERSON
	<b>NETWORKING SYSTEM</b>	
1	CAT 6 CABLE & ACCESSORIES	Comscope Systemex/DLINK
	<b>PA SYSTEM</b>	
1	Analogue PA SYSTEM	Bosch/Ahuja
	<b>FIRE FIGHTING SYSTEM</b>	
1	Fire Extinguisher	SAFEX /KANEX/SAFEPRO
2	MS PIPE	TATA/JINDAL/SAIL
3	SPRINKLER	HD FIRE/TYCO
4	HOSE PIPE	HD FIRE/TYCO
5	VALVES	AUDCO/ADVANCE/ZOLOTO

## SECTION- V: PRICE BID

NUMBER #	TEXT #	TEXT #	NUMBER #	TEXT #	TEXT #	NUMBER #
Sl. No.	Item Description	Item Code / Make	Quantity	Units	Quoted Currency in INR / Other Currency	TOTAL AMOUNT including taxes Rs. P
1	2	3	4	5	12	12
0	<b>Interior Works -Setting Up of Student Training Facility</b>					
1	Dismantling of brick work in cement mortar, (half brick) with plaster on both sides stacking of serviceable material and disposal of unserviceable material to dumping area as directed	Dismantling Of Existing Brick Work	900.00	Sqft.	INR	0.00
2	Dismantling of existing all types of flooring/ subbase and stacking the removed material in proper way or dumping the same as directed Project Manager including disposal of the same out of site premises.	Dismantling Of Existing Flooring	1150.00	Sqft.	INR	0.00
3	Dismantling of existing all types Plumbing accessories/ plumbing lines and stacking the removed material in proper way or dumping the same as directed Project Manager including disposal of the same out of site premises.	Dismantling Of Existing Plumbing Accessories	1.00	LS	INR	0.00
4	Dismantling of existing Partitions/ Ceiling, etc and stacking the removed material in proper way or dumping the same as directed Project Manager including disposal of the same out of site premises.	Dismantling Of Existing Partition	1200.00	Sqft.	INR	0.00
5	Wall Chipping and Floor Chipping for electrical Raceway Provisions and Finishing the same with matching tile/ paint finish.	Dismantling Of Existing Wall and Floor	280.00	Rmt	INR	0.00
6	<b>REPAIRS OF PLASTER/ SEAPAGE:</b> Plaster of thickness 12 mm to 20 mm in patches of any area and under, including cutting the patch in proper shape, raking out joints and preparing and plastering the surface of the walls complete.	Repair of Plaster	400.00	Sqft.	INR	0.00
7	<b>BRICK WALL CONSTRUCTION:</b> Providing and constructing brick masonry of thickness in foundation and super structure for any shapes, fins, projections, in shafts using selected quality burnt clay FPS bricks of class designation 75 laid in cement mortar, joints finished, flush/ raked to 6mm depth including scaffolding, curing complete as per specification and drawing or as directed by Project Manager. The Brick work with FPS (non modular) bricks of class designation 75 in super structure above plinth level upto floor V level in all shapes and sizes in : Cement mortar 1:6 (1 cement : 6 coarse sand)	Wall Construction	490.00	Cr.	INR	0.00
8	<b>PLASTERING:</b> Plastering in cement Mortar including cost and conveyance of all materials to site, tools and plants, labour charges, leads, lifts, scaffolding, curing and all other incidental and operational charges etc. complete for finished item of work. 12 mm cement plaster of mix in CM 1:4 (1 cement: 4 fine sand)	Plastering	58.00	Sqft.	INR	0.00
9	<b>TOILET CUBICLES:</b> Providing and Fixing of Toilet Partitions Thickness of Compact Laminate: 12mm Colour of HPL Boards: Single Colour Size of Cubicle: 1000mm(W) x 1550mm(D) x 2003mm(H) Door Size: 1750mm(H) x 610mm(W) Overall Height of Cubicle: 2003mm (Including bottom Gap of 150 mm) Accessories: Standard - Merino make or Equivalent Aluminium, Nylon Polyamide 6 accessories Aluminium "U" Channel Aluminium "F" Channel Aluminium Door Stopper Channel Aluminium Top Rail Nylon Coat Hook Nylon Privacy Thumb turn c/w Occupancy Indicator Nylon Door Knob Nylon Hings - Gravity to close Nylon Adjustable Foot Rubber Door Stopper Lining S.S.Screws 304 G & P.V.C. Wall Plugs	Toilet Partitions	5.00	No's	INR	0.00

10	<b>BRICKBAT WATERPROOF COBA</b> - Providing waterproofing treatment through specialized agencies as per their specifications to the flooring of Terrace Slab, water closets, bathrooms, kitchen, nahanies, washing places, sanitary blocks etc. by giving INJECTIONS with cement solution with water proofing compound into the floor slab so as to make it consistent, homogeneous and impervious against leakage seepage etc. The sunk portion and terrace slab shall then be covered with brickbat waterproof coba in 1:5 c.s. of required thickness with necessary gradient for easy flow of water. Finally the floor shall be covered with joint less waterproof cement plaster in 1:3 c.s. 12 mm to 15 mm thick finished rough for receiving tiles. The average thickness of complete treatment shall not be less than 100 mm. The soil pan area will not be deducted. (After completion of work leakage test shall be carried out after impounding the water for 7 days without any extra cost. The actual treated area will be measured and paid for).	Water Proofing Treatment Terrace	400.00	Sqft.	INR	0.00
11	<b>WATER PROOFING:</b> Providing and laying composite built up waterproofing in the <b>toilets/ kitchen/ pantry</b> etc. comprising of three coats of Tapcrete or equivalent polymer, each coat admixed with cement in the proportion 1:2 (one part tapcrete and two parts cement) over a primer coat of neat cement sturry admixed with impermeable chemical CH-9. After the second coat of tapcrete, all corners, edges, joints of pipes with concrete / masonry should be sealed with epoxy putty. The waterproofing treatment is to be laid underneath all sanitary pipes on the base and taken up onto the verticals upto a level of minimum 300mm above the finished tile floor level including providing and fixing of PVC spout, 10mm thick protective plaster 1:4 (1 cement : 4 coarse sand) over treated surface etc complete. (Quoted rate to include grouting of RCC surface for any cracks/ fissures)	Water Proofing Toilets	400.00	Sqft.	INR	0.00
12	<b>WASH AREA PLATFORM:</b> Providing and fixing polished and half round moulded edge 18 mm thick (Zet Black) Granite slab (Basic rate Rs.200/- sqft) on the existing pantry platform complete with cleaning of joints and curing.	Wash Area Platform	17.00	Rft.	INR	0.00
13	Providing & laying M25 grade RCC Slab of 75-150mm thk for Toilets/Pantry/Ramp etc. with 12mm reinforcement @ 20cm c/c both ways. The rates of concrete to include the cost of shuttering.	RCC Slab for Toilets	20.00	Cft.	INR	0.00
14	<b>CERAMIC TILES</b> - (Pantry/Toilet): Providing and laying ceramic floor tiles 300x300mm conforming to IS 15622 of minimum thickness 5 mm of approved make & colours laid on cement mortar 1:4 (1 cement:4 coarse sand) including pointing the joints with white cement and matching pigment etc. with untide adhesive after cleaning scrubbing, washing etc. complete as direct by Architect in charge. (Basic Rate RS.45/sqft)	Laying of Ceramic Tiles	650.00	Sqft.	INR	0.00
15	<b>VITRIFIED TILES:</b> Providing and laying of 600x600.8-10mm thick vitrified tiles of approved make & colours laid on cement mortar (1 cement:4 coarse sand) including pointing of the joints with white cement and matching pigment complete as direct by Architect in charge. (Basic Rate RS.60/sqft)	Laying of Vitrified Tiles	4900.00	Sqft.	INR	0.00
16	<b>VITRIFIED TILES (FOR SKIRTING):</b> Providing and laying of 600x600.8-10mm thick vitrified tiles in 4" to 6" skirting of approved make & colours laid on cement mortar (1 cement:4 coarse sand) including pointing of the joints with white cement and matching pigment complete. (Basic Rate RS.60/sqft)	Laying of Vitrified Tiles Skirting	390.00	R.ft	INR	0.00
17	<b>DISPOSAL OF DEBRIS:</b> Disposal of debris - from 4th floor to dump yard (no lift provision provided)	Disposal of Debris	7.00	Loads	INR	0.00
18	<b>CLEANING:</b> Housekeeping works, including carting away of construction debris on daily basis and periodic vacuuming of the site. The quote includes cost of complete dust free hand over of site.	Clearing and Cleaning of Debris	45.00	MD	INR	0.00
19	<b>WATER CLOSET (ENGLISH TYPE)</b> : Providing and fixing first quality European water closet of approved make EWC Constellation in approved colour including providing and fixing cistern height 80cm, width 36 cm with necessary porcelain, P/S trap heavy duty plastic seats of approved manufacturer such as commander in approved colour, CP brass hinges, buffers etc. all complete including fixing in position with necessary holes, providing and fixing CP brass screws and connecting the outlet to the soil stack including testing the joints all complete as per specifications and as approved by the Engineer-in-charge.	Water Closet	5.00	Nos	INR	0.00
20	<b>URINAL WITH FLUSH VALVE</b> : Providing and fixing wall hang urinal of approved make flat back large in white colour and size of (H x W x P): 59 cm x 39 cm x 37.5 cm white in colour fixed with the help of angle brackets including providing water spreader, domb, and providing and fixing urinal valve (Jaguar), make cat No 077 of urinal valve auto closing system with Built in control cock finished with C.P and providing and fixing bottle trap (Jaguar) all complete as per the directions of the Engineer-in-charge.	Urinal with Flush Valve	6.00	Nos	INR	0.00

21	<b>URINAL PARTITION:</b> Providing and fixing urinal partition made out of natural stone 20 mm thick granite finished with both side mirror polished in suitable size and shape. The partition to be fixed with the wall by cutting the wall with the help of machine, grouting the partition with suitable bracket / cement. The exposed edges of the partition to be mirror polished / Moulded edges.	Urinal Partition	6.00	Sqft.	INR	0.00
22	<b>WASH BASIN:</b> Providing and fixing counter top wash basin units in oval shape (concealed type wash basin as approved model and size) in approved colour	Wash Basin	5.00	Nos	INR	0.00
23	<b>BIB COCK (TWO IN ONE):</b> Providing and fixing heavy duty 15 mm dia C.P. brass two in one bib cock of approved with wall flange all complete as per standard specifications and as directed by the Engineer-in-Charge.	Bib Cock	5.00	Nos	INR	0.00
24	<b>STOPCOCK / ANGLE COCK:</b> Providing and fixing heavy duty stopcock manufactured in chromium plated with adjustable flange all complete as per standard specifications and as directed by the Engineer-in-charge.	Stopcock	5.00	Nos	INR	0.00
25	<b>PILLAR COCK:</b> Providing and fixing heavy duty Pillar cock of approved make all complete as per standard specifications and as directed by the Engineer-in-Charge including heavy duty C.P. Water connectors. (15 mm dia.)	Pillar Cock	5.00	Nos	INR	0.00
26	<b>JET SPRAY :</b> Providing and fixing hand type Jet Spray with adjustable nozzle and push type valve and inlet flexible water connection in the toilet.	Jet Spray	5.00	Nos	INR	0.00
27	<b>NAHANI TRAP:</b> Providing and fixing 100 mm. dia heavy quality approved make C.I. Nahani trap with 75 mm. dia outlet, embedding the trap in cement concrete using 1 : 3 : 6 mix with 20 mm. B.G. metal forming flow sump upto floor level over the trap, conveying the materials to all the floors, cutting masonry or concrete surface, restoring the same to their original conditions etc. providing and fixing 125 mm dia. brass chromium plated grating etc. all complete, as directed by the Engineer-in-Charge.	Nahani Trap	8.00	Nos	INR	0.00
28	<b>PLUMBING WORKS:</b> Supplying, installing laying cutting, jointing, fixing and testing of supply and drain lines Including pipes, proper pipe support, hangers, brackets with necessary grip bolts, all complete, as directed by the Engineer-in-Charge.	Drain Lines	1.00	LS	INR	0.00
29	<b>MIRRORS FOR WASH ROOMS:</b> Providing and Fixing of Looking 6MM thk Mirror on 12 mm thk ply panelling. Rate shall include 12 mm thk marine ply, Edge molding, fixing, all wastage, melamine polish etc. complete as per details provided.	Mirror	32.00	Sqft.	INR	0.00
30	<b>UNDER DECK INSULATION:</b> Providing and Fixing under deck insulation using 19mm XLE Foam with chemical Adhesive including cost and conveyance of all materials to site, to oils and plants, labour charges, leads, lifts, scaffolding, curing and all other incidental and operational charges etc. complete for finished item of work.	Insulation Works	2300.00	Sqft.	INR	0.00
31	<b>SOLID PARTITION:</b> Providing and fixing of SOLID PARTITIONS of 68mm : Made out of 2"x1" aluminium anodised section (ISI reputed brands) frame 2'-0" c/c both ways, covered with 09 mm thick interior grade plain Medium Density Fibre Board. All provisions to be made for all electrical, networking boxes onto partition framework at required heights/levels with necessary additional supports as directed.	Solid Partition	1170	Sqft.	INR	0.00
32	<b>GLASS PARTITION:</b> Providing and Fixing 12 mm thick glass full height glass. The works includes fixing of glass with Top & Bottom surfaces with proper support/frame. Including silicon sealant filling between glass joints. Glass Make : Saint Gobain/Taiton/Bottomline/Equivalent as approved by Architect	Glass Partition	368	Sqft.	INR	0.00
33	<b>TOUGHEN GLASS DOOR:</b> Providing & fixing 12 mm thick toughened glass Doors with reputed make floor spring, Parch fitting, S.S. Handle 12" long, Door Lock, Door stopper, and all fittings, hardware (Dorma/Ozone/Godrej) etc. complete in all respect.	Toughen Glass D	10	No.s	INR	0.00
34	<b>Flush Door:</b> Providing and fixing single leaf solid core flush door 35mm thick factory made-, finished on both sides with 1.0mm thick laminate of approved shade as indicated in drawing. Shutter to be lipped on all sides with 12mm thick teak wood beading. Applicable hardwares to be considered for following doors according to requirement as per detailed drawings including below mentioned hardware-Door closer, SS Ball bearing Hinges, SS foot operated Door stopper, SS Mortise Latch Lock / concealed dead lock, SS Mortise Handle.	Flush Door	4	No's	INR	0.00
35	<b>WALL/COLUMN PANELLING:</b> Fabricating and fixing wall/column panelling to consist Aluminum Sections at spacing not exceeding 600mm both ways (horizontal and vertical). Panelling framework to be secured to wall surface/column surface. Panelling framework to be clad on one side with 12mm thick commercial ply finished with 1.0mm thk laminate including skirting of 100mm high & 12mm x 12mm groove at skirting level.	Wall Panelling	550	Sqft.	INR	0.00
36	<b>WINDOW PANELLING:</b> Fabricating and fixing wall/column panelling to Metal Sections at spacing not exceeding 600mm both ways (horizontal and vertical). Panelling framework to be secured to wall surface. Panelling framework to be clad on one side with 12mm thick cement board/ calcuip silicate boards, finished with painting.	Window Panelling	450	Sqft.	INR	0.00

37	<p><b>ACOUSTIC WALL PANELLING:</b> The wall panels shall be made of high-grade PVC, ensuring durability, lightweight construction, and resistance to moisture, corrosion, and impact. The material shall be suitable for installation in high-humidity areas such as bathrooms, kitchens, and commercial interiors. The panels shall be fire-retardant and environmentally responsible, providing a sustainable solution for modern interiors.</p> <p>The panels shall feature 3D louvers or fluted designs that provide an elegant, contemporary appearance while adding depth and texture to interior walls. The finish shall be scratch-resistant, fade-resistant, and easy to maintain, ensuring longevity in high-traffic areas. The panels shall offer excellent acoustic performance with a Noise Reduction Coefficient (NRC) of 0.9, making them suitable for offices, hotels, restaurants, and residential spaces requiring enhanced sound absorption and improved acoustic comfort.</p> <p>The installation shall be lightweight, hassle-free, and suitable for screw mounting on prepared wall surfaces. Panels shall be easy to cut and customize to fit various layouts without specialized tools. The smooth, non-porous surface shall be stain-resistant and easily cleaned with a damp cloth.</p> <p>The installed system as per manufacturer's specification as per direction of Engineer-in-Charge. ( Make: Anutone, Earcons Acoustic, Top Akoustic, Plantex)</p>	Acoustic Wall Pa	1256	Sqft.	INR	0.00
38	<p><b>BAFFLE CEILING SYSTEM:</b> Providing same Ceiling system (100x25mm) To Supply vertical Linear Baffle Ceiling system , exhibiting space-delineating characteristics. The system comprises baffles 25mm wide &amp; 100mm Deep ,installed at 150mm C/C distance with 0.5 mm thick made of G I sheet having galvanizing of 100 gms/sqm (both sides inclusive) and electro statically polyester powder coated of thickness 60 microns (minimum),including factory painted after bend, with Jotun Anti-microbial 60-micron powder coating activity using Test Based on MOD ISO 22196:2011. Powder coating test result should pass, Pencil hardness ASTM D3363-05, Scratch resistance ISO 1518-1/ SIS 83 91 17, Impact resistance ASTM D2794, Resistance to neutral salt spray ASTM B117, Resistance to humid atmospheres: ISO 6270-2, Adhesion ISO 2409, Expected durability of the antimicrobial effect: 25+ years according to an accelerated test. The carrier rails run perpendicular to the baffles. Individual baffle lengths between 300 and 2400 mm can be selected. Baffle ceiling are supplied with the end cap matching the similar finish of baffle. Substructure Vertical baffle system consisting of L shaped galvanized slotted carriers installed perpendicularly to baffles hanging carrier at maximum 1200mm centers using cross connectors. The primary profiles must be connected to one another with longitudinal splice connectors. The entire ceiling module shall be suspended with 6mm diameter galvanized steel threaded rods from the true ceiling officially approved anchor fasteners maximum at</p>	Baffle Ceiling Sys	350	Sqft.	INR	0.00
39	<p><b>GYPSUM CEILING - Providing an ironing an ironing raise ceiling of 12.5 mm thick tapered edge gypsum board conforming to IS: 2095 including providing and fixing of frame work made of special sections power pressed from M.S. sheet and galvanized in accordance with zinc coating 600 as per IS: 277 and consisting of angle cleats of size 25 mm wide X 15 mm thick with flanges of 22 mm and 37 mm at 1200 mm centre to centre one flange fixed to the ceiling with dash fastner 12.5 mm dia X 40 mm long with 6 mm dia. Bolts to the angle hangers of 25 X 25 X 5 mm of required length, and other end of angle hanger being fixed with nuts and bolts to 6.1 channels 45 mm X 15 mm X 0.9 mm running at the rate of 1200 mm centre to centre to which the ceiling section 0.5 mm thick bottom wedge of 80 mm with tapered flanges of 26 mm each having clips of 10.5 mm at 450 mm centre to centre shall be fixed in a direction perpendicular to 6.1 channel with connecting clips made out of 2.64 mm dia. X 230 mm long 6.1 mm wire at every junction including fixing the gypsum board with ceiling section and perimeter channels: 0.5 mm thick 27 mm high having flanges of 20 mm and 30 mm long, the perimeter of ceiling fixed to wall/partition with the help of rawlplugs at 450 mm centre to centre with 25 mm long drive - all screws @ 230 mm interval including joining and fixing to a flush finish of tapered and square edges of the gypsum board with recommended filler, paper tapes, finished and two coats of primer suitable for gypsum board as per manufacturers specification and also including the cost of making openings for light fixtures with diameter as per standard with frame of</b></p>	Gypsum Ceiling	300.00	Sqft.	INR	0.00
40	<p><b>POLYSTER WOOL:</b> Providing and fixing Polyester Wool Insulation composed of Poly fibers, thermally bonded (no Chemical is used) with following specifications, Density UP TO 500 Gsm/sqm, thermal conductivity at 25 Deg C 1000 Gsm 50mm thk-0.023W /Mk IS3 346-1980 mean temperature, fire retardancy test 0(ZER) Guidelines of ASTM D 635, Fungi Resistance (do not promote fungi growth), noise Reduction Coefficient: 0.65 NRC. Standard Compliance : ASTM D635, IS3 346-1980.</p>	Polyster Wool	1250	Sqft.	INR	0.00

41	<p><b>GRID FALSE CEILING(METAL TILES):</b> Providing and fixing tiled false ceiling of GI Metal Ceiling Lay in perforated Tegular edge global white color tiles of size 595x595 mm and 0.5 mm thick with 8 mm drop(Armstrong/Saint Gobin India Gypsum/USB Boral/Hunter Douglass/Pre Approved Brand); made of GI sheet having galvanizing of 100 gms/sqm (both sides inclusive) and 20% perforation area with 1.8 mm dia holes and having NRC (Noise Reduction Coefficient) of 0.5, electro statically polyester powder coated of thickness 60 microns (minimum), including factory painted after bending and perforation, and backed with a black Glass fiber acoustical fleece, suspended on inter locking metal grid of hot dipped galvanized steel sections (galvanized @ 120 grams/ sqm, both side inclusive) consisting of main "T" runner with suitably spaced joints to get required length and of size 24x38 mm made from 0.30 mm thick (minimum) sheet, spaced at 1200 mm center to center and cross "T" of size 24x25 mm made of 0.30 mm thick (minimum) sheet, 1200 mm long spaced between main "T" at 600 mm center to center to form a grid of 1200x600 mm and secondary cross "T" of length 600 mm and size 24x25 mm made of 0.30 mm thick (minimum) sheet to be interlocked at middle of the 1200x600 mm panel to form grids of 600x600 mm and wall angle of size 24x24x0.3 mm and laying false ceiling tiles of approved texture in the grid including, required cutting/making, opening for services like diffusers, grills, light fittings, fixtures, smoke detectors etc. Main "T" runners to be</p>	Grid False Ceiling	2300.00	Sqft.	INR	0.00
42	<p><b>MINERAL FIBRE GRID FALSE CEILING - 15mm (600x600 mm):</b> Providing and fixing 15mm thick of approved texture with required groove approved by architect false ceiling tiles of Armstrong/Saint Gobin India Gypsum/USB Boral/Hunter Douglass/Pre Approved Brand of specified materials of size 595x595 mm in true horizontal level, suspended on inter locking metal grid of hot dipped galvanized steel sections(galvanized @120 grams/sqm, both side inclusive)consisting of Main "T" runner with suitably spaced joints to get required length and of size 24x32mm made from 0.30mm thick(minimum) sheet, spaced at 1200 mm center to center and cross "T" of size 24x26mm made of 0.30 mm thick(minimum) sheet, 1200 mm long spaced between main "T" at 600 mm center to center to form a grid of 1200 x600 mm and secondary cross "T" of length 600 mm and size 24x26 mm made of 0.30 mm thick minimum sheet to be interlocked at middle of the 1200x600mm panel to form grids of 600x600mm and wall angle of size 24x24x0.40 mm and laying false ceiling tiles of approved texture &amp; Specifications in the grid including, required cutting/making, opening for services like diffusers, grills, light fittings, fixtures, smoke detectors etc.</p>	Mineral Fibre Gr	2300.00	Sqft.	INR	0.00
43	<p><b>ALUMINIUM SKIRTING:</b> Providing &amp; fixing of 75mm high aluminium skirting as per sample approved including necessary wastage, hardware, fixtures, base completed as per details given in drawing/Architect instruction. The profile has a 20 micron (average) anodized finish &amp; the entire surface is supplied with a polyethylene film to protect against abrasion &amp; stains, the film is removed at the time of handover.</p>	Aluminium Skirt	150	Rmt	INR	0.00
44	<p><b>FRAME &amp; SHUTTER STORAGE:</b> Providing and fixing storage shutter on existing RCC storage. Made with 19 mm thick MR grade commercial ply finished both side with 1 mm thick laminate including hardware ie hinges, handle, lock etc. complete with require frame for shutter. Make:- Greenply/Archid/Kitply or equivalent</p>	Frame and Shutt	550	Sqft.	INR	0.00
45	<p><b>PLASTIC EMULSION PAINT:</b> Providing and applying plastic emulsion paint for finish to walls, blocked partitions, and plasterboard, ceiling, etc of approved shade, texture. No cornices grooves pattas shall be measures separately. Only plane surface shall be considered for measurement . All works to be carried out as per manufacturers specification and guide lines.The surface of wall or ceiling to be painted shall be prepared to the satisfaction of the Architect, and shall be applied with two coats of primer, two coats of putty and touch up putty if required to achieve smooth finish. The surface shall be painted with two coats of Plastic emulsion paint . All rates inclusive of scaffolding and tools and tackles required for the same.</p>	Plastic Emulsing	8000	Sqft.	INR	0.00
46	<p><b>MODULAR WORK STATION:</b> Supply and Installation of L shape Work stations as per approved shades - The size of the each work station considered is L(1500 W + 1350) X W600 W X H750 mm and height of modular aluminium partition considered is 1200mm and 56mm thick, and provided with raceway provisions for electrical and networking cables. The table top is made of 25mm thick PLPB of approved shade and supported with 25mm thick Gable Ends. Considered 3 Draw PLPB Pedestals. BIFMA Standard(Make: Godrej/ Nilkamal/ Featherlite/Geeken).</p>	Modular Workst	6	No's	INR	0.00
47	<p><b>MODULAR WORK STATION:</b> Supply and Installation of Linear Work stations as per approved shades - The size of the each work station considered is L1200 X W 600 X H750 mm and height of modular aluminium partition considered is 1200mm and 56mm thick, and provided with raceway provisions for electrical and networking cables. The table top is made of 25mm thick PLPB of approved shade and supported with 25mm thick Gable Ends. Considered 3 Draw PLPB Pedestals. BIFMA Standard(Make: Godrej/ Nilkamal/ Featherlite/Geeken).</p>	Modular Linear	18	No's	INR	0.00

48	<b>CABIN FURNITURE:</b> Supply and installation of HOD Table (L:1500 X D:750 X H:750mm) with Modesty, Side table(L:900 X D:420 X H:750mm), Pedestal, Ebco make Cpu Trolley & Keyboard tray Freestanding table, top 25mm PLPB, metal legs in 40x30 CRCA tube with metal perforated and PLPB modesty of 600mm height.(1500x750x750) Freestanding side table, top 25mm PLPB, metal legs in 40x30 CRCA tube and metal perforated/ PLPB modesty of 600mm height. L 900x 420 D x 750 H 3 drawer PLPB pedestal in 18mm PLPB of size 400x450x80. BIFMA Standard(Make: Godrej/ Nilkamal/ Featherlite/Geeken).	Cabin Furniture	2	Set	INR	0.00
49	<b>CLASS ROOM TABLE:</b> Supply and installation of class room table made of MS powder coated under structure/ support structure. cable management systems (Race Ways) provided for electrification and fixed with 25mm Prelaminated Particle Board Top and Perforated Metal Modesty, factory finished - of approved shade and grain as suggested by the Engineer In charge. All exposed surfaces to be finished 2mm thick PVC edge Banding. The vendor shall follow specific instructions for creating the necessary groove pattern as directed by the Engineer In charge. The Legs shall be made of powder coated MS tube of minimum 1.2mm thick. Front modesty covered with Perforated Metal Modesty. All material should be used of relevant IS specification. Necessary drawing to be prepared and approval to be taken from the Engineer-inb Charge prior to production. Size of Each Table Considered is 2400 L X 450 D X 750 H (mm)	Class Room Table	40	No's	INR	0.00
50	<b>CABIN CHAIRS:</b> Supply and Installation of Revolving High Back Chair with Moulded Foam Seat upholstered with fabric, Mesh back on Nylon frame, CTS Mechanism, Adjustable PU Pad Armrest. Overall Dimension: 730 W x 700 D x 1150/1250 H, Mechanism Type: Center Tilt Synchro Mechanism, Lumbar support Adjustment: Height Adjustable, Arms Adjustment: Height Adjustable 1D with PU padded top, Seat Cushion /Foam density & thickness: Density 45 Kg/cu.m , 50mm thk, Base Type: Nylon matt Black, BIFMA Standard(Make: Godrej/ Nilkamal/ Featherlite/Geeken).	Cabin Chairs	2	No's	INR	0.00
51	<b>STAFF CHAIRS:</b> Supply and Installation of Revolving High Back Chair with Moulded Foam Seat upholstered with fabric, Mesh back on Nylon frame, CTS Mechanism, Adjustable PU Pad Armrest. Overall Dimension: 730 W x 700 D x 995/1090 H, Mechanism Type: Center Tilt Synchro Mechanism, Lumbar support Adjustment: Height Adjustable, Arms Adjustment: Height Adjustable 1D with PU padded top, Seat Cushion /Foam density & thickness: Density 45 Kg/cu.m , 50mm thk, Base Type: Nylon matt Black, BIFMA Standard(Make: Godrej/ Nilkamal/ Featherlite/Geeken).	Staff Chairs	24	No's	INR	0.00
52	<b>VISITOR CHAIRS:</b> Supply and Installation VISITOR Chair(Mid Back) with Moulded Foam Seat upholstered with fabric, Mesh back on Nylon frame, Fixed PP Armrest, PC Cantilever Frame, Overall Dimension: 620 W x 610 D x 1015 H. Base type: PC Cantilever Frame Dia 25.4 x 2.5 mm Thk, Seat Cushion /Foam density & thickness: Density 45 Kg/cu.m, 25 Hardness, 50mm thk, BIFMA Standards.(Make: Godrej/ Nilkamal/ Featherlite/Geeken)	Visitor Chairs	4	No's	INR	0.00
53	<b>TRAINING CHAIRS:</b> Revolving (Mid Back) - Nylon Moulded Backrest with Mesh Fabric - Moulded Seat foam with upholstered fabric, Adjustable PU Pad Armrest. Overall dimensions: 710 W x 685 D x 1015/1105 H, Mechanism type : Center Tilt Synchro Mechanism, Seat Base : 12 mm Thk Hot pressed Moulded Ply wood, Seat Cushion /Foam density & thickness: Density 55 Kg/cu.m, 90 mm thk, Hardness 10Kgf, Mechanism Type: Center Tilt Synchro Mechanism, Certification: BIFMA STANDARDS (Make: Godrej/ Nilkamal/ Featherlite/Geeken)	Training Chairs	160	No's	INR	0.00
54	Supply of Inverter type Split AC of 2.0 TR Capacity and 3 Star BEE Rated, 5 in 1 convertible, Anti Corrosive Blue Fins, 5 Years PCB Warranty and 10 Years Compressor Warranty, Make: LG/ Daikin/ Blue Star/ O General	HiWall AC - 2.0 TR	9.00	No's	INR	0.00
55	Supply of Inverter type Split AC of 1.5 TR Capacity and 3 Star BEE Rated, 5 in 1 convertible, Anti Corrosive Blue Fins, 5 Years PCB Warranty and 10 Years Compressor Warranty, Make: LG/ Daikin/ Blue Star/ O General	HiWall AC - 1.5 TR	4.00	No's	INR	0.00
56	Supply of Inverter type Split AC of 1.0 TR Capacity and 3 Star BEE Rated, 5 in 1 convertible, Anti Corrosive Blue Fins, 5 Years PCB Warranty and 10 Years Compressor Warranty, Make: LG/ Daikin/ Blue Star/ O General	HiWall AC - 1.0 TR	3.00	No's	INR	0.00
57	Installation, Testing and Commissioning of AC Unit	Installation of AC unit	9.00	No's	INR	0.00
58	Supplying & Laying extra suitable PVC Drain piping with all required material.	Laying of Drain Pipe	45.00	Mtrs	INR	0.00
59	Supplying & Laying extra suitable Copper refrigerant piping with all required material.	Laying of Copper Pipe	45.00	Mtrs	INR	0.00
60	Supplying & Fixing suitable MS Stand for outdoor unit	Fixing of Outdoor Unit	45.00	Nos	INR	0.00
61	Electrical wiring between outdoor and indoor	Electrical Wiring	45.00	Mtrs	INR	0.00
<b>Total in Figures</b>						<b>0.00</b>

ALL THE COMMERCIAL TERMS OF THE SUPPLY SHOULD BE MENTIONED.

PRICES SHOULD NOT BE MENTIONED IN THE TECHNICAL BID

## ANNEXURE A – COVERING LETTER

Date:

To:

Centre for Development of Advanced Computing (C-DAC)  
Plot No 6 & 7, Hardware Park,  
Srisaillam Highway,  
Hyderabad - 501510

Subject: Submission of bid for INTERIOR WORKS – SETTING UP OF EMPLOYEE WORKSTATION AT HARDWARE PARK CAMPUS.

Dear Sir,

We, the undersigned, offer INTERIOR WORKS – SETTING UP OF EMPLOYEE WORKSTATIONS AT HARDWARE PARK CAMPUS, in response to your tender no. CDACH/PUR/26/INTERIOR-HWP dated 14.05.2026, We are hereby submitting our proposal for same, which includes Technical bid and the Financial Bid on [www.eprocure.gov.in](http://www.eprocure.gov.in)

We hereby declare that all the information and statements made in this bid are true and we accept that any misinterpretation contained in it, may lead to our disqualification.

We undertake, if our proposal is accepted, to submit a Security Deposit of 5 % of the contract /order value, as per terms stipulated in the bid.

We hereby certify that my/ our firm has not been disqualified and / or blacklisted by any Office/ Department/ Undertaking of the State Government / Central Govt. of India, PSU/ Autonomous Body of Government of India, at the time of submission of this bid.

We agree to abide by all the terms and conditions of the bid document, including corrigenda.

We would hold the terms of our bid valid for 120 days as stipulated in the bid document.

We understand you are not bound to accept any Proposal you receive.

The undersigned is authorized to sign this bid document. The authority letter to this effect is enclosed.

Yours sincerely,

Authorized Signatory:

Name and Title of Signatory: e-mail:

Mobile No:

## ANNEXURE B – AUTHORITY LETTER

Reference: Tender no. CDACH/PUR/26/INTERIOR-HWP

Date:

To:

Centre for Development of Advanced Computing (C-DAC)  
Plot No. 6 & 7, Hardware Park,  
Srisaïlam Highway,  
Hyderabad - 501510

Subject: Authority Letter

Dear Sir,

We, M/s (Name of the bidder) having registered office at (Address of the bidder) herewith submit our bid against the said bid document. Mr./Ms. (Name and designation of the signatory) , whose signature is appended below, is authorized to sign and submit the bid documents on our behalf against said RFP.

Specimen Signature:

The undersigned is authorised to issue such authorisation on behalf of us.

For M/s (Name of the bidder)

Signature and company seal

Name

Designation

Email

Mobile No.

**ANNEXURE C – Undertaking by Principal Manufacturer(s)**

(To be submitted in Original on Letterhead)

Date:

**Director,  
Centre for Development of Advanced Computing  
Plot No. 6 & 7, Hardware Park, Srisaïlam Highway  
Hyderabad - 501510**

Subject: Undertaking by Principal Manufacturer against tender no. CDACH/PUR/26/INTERIOR-HWP for INTERIOR WORKS – SETTING UP OF EMPLOYEE WORKSTATIONS AT HARDWARE PARK CAMPUS at C-DAC, Hyderabad

Dear Sir,

We, M/s \_\_\_\_\_ (*Name of the manufacturer*) having registered office at \_\_\_\_\_ (*address of the manufacturer*) by virtue of being manufacturer for \_\_\_\_\_ (*Name of the product/s*), hereby authorise M/s \_\_\_\_\_ (*Name of the bidder*) having their office at \_\_\_\_\_ (*Address of bidder*) to submit quote, supply, install and provide after sales support for our range of products quoted by them to meet the above mentioned tender requirements.

M/s \_\_\_\_\_ (*Name of the manufacturer*) within the scope of requirement as per the tender mentioned above undertake to provide technical & other support towards fulfilling the requirements of installation, commissioning, erection, acceptance criteria and product warranty services of \_\_\_\_\_ to be supplied and installed at C-DAC, Hyderabad by our authorised representative M/s. (*Name of bidder*) against said tender.

The undersigned is authorised to issue such authorisation on behalf of M/s \_\_\_\_\_ (*Name of the manufacturer*).

For M/s \_\_\_\_\_ (*Name of the manufacturer*)

Signature & company seal

Name

Designation

Email

Mobile No.

**ANNEXURE D – PROFORMA OF BANK GUARANTEE**  
(on non-judicial paper of appropriate value)

To,

**Centre for Development of Advanced Computing**  
**Plot No. 6 & 7, Hardware Park,**  
**Srisailem Highway,**  
**Hyderabad – 501510**

BANKS GUARANTEE NO:

DATE:

Dear Sir(S)

This has reference to the Purchase Order No. \_\_\_\_\_ Dated \_\_\_\_\_ been placed by Centre for Development of Advanced Computing(C-DAC), Hyderabad on M/s \_\_\_\_\_ (Name

& Address of vendor) for supply, installation, commissioning, testing and warranty of

\_\_\_\_\_ (description of items) at client's site.

The conditions of this order provide that the vendor shall,

1. Arrange to deliver the items listed in the said order to the consignee, as per details given in said order, and
2. Arrange to install and commission the items listed in said order at client's site, to the entire satisfaction of C-DAC and
3. Arrange for the comprehensive warranty service support towards the items supplied by vendor on site as per the warranty clause in said purchase order.

M/s (Name of Vendor) has accepted the said purchase order with the terms and conditions stipulated therein and have agreed to issue the performance bank guarantee on their part, towards promises and assurance of their contractual obligations vide the Supply Order No.

\_\_\_\_\_ M/s. \_\_\_\_\_ (name of vendor) holds an account with us and has approached us and at their request and in consideration of the promises, we hereby furnish such guarantees as mentioned hereinafter.

C-DAC shall be at liberty without reference to the Bank and without affecting the full liability of the Bank hereunder to take any other undertaking of security in respect of the suppliers obligations and / or liabilities under or in connection with the said contract or to vary the terms vis-a – vis the supplier or the said contract or to grant time and or indulgence to the supplier or to reduce or to increase or otherwise vary the prices or the total contract value or to forebear from enforcement of all or any of the obligations of the supplier under the said contract and/or the remedies of C-DAC under any security now, or hereafter held by C-DAC and no such dealing(s) with the supplier or release or forbearance whatsoever shall have the effect of releasing the bank from its full liability of C-DAC hereunder or of prejudicing right of C-DAC against the bank.

This undertaking guarantee shall be a continuing undertaking guarantee and shall remain valid and irrevocable for all claims of C-DAC and liabilities of the supplier arising up to and until \_\_\_\_\_ (date)

This undertaking guarantee shall be in addition to any other undertaking or guarantee or security whatsoever the that C-DAC may now or at any time have in relation to its claims or the

supplier's obligations/liabilities under and / or in connection with the said contract and C-DAC shall have the full authority to take recourse to or enforce this undertaking guarantee in preference to the other undertaking or security (ies) at its sole discretion and no failure on the part of C-DAC in enforcing or requiring enforcement of any other undertaking or security shall have the effect of releasing the bank from its full liability hereunder.

We \_\_\_\_\_ (Name of Bank) hereby agree and irrevocably undertake and promise that if in your (C-DAC's) opinion any default is made by M/s \_\_\_\_\_ (Name of Vendor) in performing any of the terms and /or conditions of the agreement or if in your opinion they commit any breach of the contract or there is any demand by you against M/s \_\_\_\_\_ (Name of Vendor), then on notice to us by you, we shall on demand and without demur and without reference to M/s \_\_\_\_\_ (Name of Vendor), pay you, in any manner in which you may direct, the amount of Rs. \_\_\_\_\_/- (Rupees \_\_\_\_\_ Only ) or such portion thereof as may be demanded by you not exceeding the said sum and as you may from time to time require. Our liability to pay is not dependent or conditional on your proceeding against M/s \_\_\_\_\_ (Name of Vendor) and we shall be liable & obligated to pay the aforesaid amount as and when demanded by you merely on an intimation being given by you and even before any legal proceedings, if any, are taken against M/s \_\_\_\_\_ (Name of Vendor)

The Bank hereby waives all rights at any time inconsistent with the terms of this undertaking guarantee and the obligations of the bank in terms hereof shall not be anywise affected or suspended by reason of any dispute or disputes having been raised by the supplier (whether or not pending before any arbitrator, Tribunal or Court) or any denial of liability by the supplier or any order or any order or communication whatsoever by the supplier stopping or preventing or purporting to stop or prevent payment by the Bank to C-DAC hereunder.

The amount stated in any notice of demand addressed by C-DAC to the Bank as claimed by C-DAC from the supplier or as suffered or incurred by C-DAC on the account of any losses or damages or costs, charges and/or expenses shall as between the Bank and C-DAC be conclusive of the amount so claimed or liable to be paid to C-DAC or suffered or incurred by C-DAC, as the case may be and payable by the Bank to C-DAC in terms hereof.

You (C-DAC's) shall full liberty without reference to us and without affecting this guarantee, postpone for any time or from time to time the exercise of any of the powers and rights conferred on you under the contract with the said M/s \_\_\_\_\_ (Name of Vendor) and to enforce or to forbear from endorsing any power or rights or by reason of time being given to the said M/s \_\_\_\_\_ (name of Vendor) which under law relating to the sureties would but for the provisions have the effect of releasing us.

You will have full liberty without reference to us and without affecting this guarantee, postpone for any time or from time to time the exercise of any of the powers and rights conferred on you under the contract with the said M/s \_\_\_\_\_ (Name of Vendor) and to enforce or to forbear from endorsing any power or rights or by reason of time being given to the said M/s \_\_\_\_\_ (Name of Vendor) which under law relating to the sureties would but for the provisions have the effect of releasing us.

**CENTRE FOR DEVELOPMENT OF ADVANCED COMPUTING,  
Hyderabad**

---

---



Your right to recover the said sum of Rs. \_\_\_\_\_/- (Rupees \_\_\_\_\_ only) from us in manner aforesaid will not be affected/ or suspended by reason of the fact that any dispute or disputes have been raised the said M/s \_\_\_\_\_ (Name of Vendor) and/ or that any dispute or disputes are pending before any officer, tribunal or court or Arbitrator.

The guarantee herein contained shall not be determined or affected by the liquidation or winding up, dissolution or change of constitution or insolvency of the said M/s \_\_\_\_\_ (Name of Vendor) but shall in all respects and for all purposes be binding and operative until payment of all dues to C-DAC in respect of such liability or liabilities.

Our liability under this guarantee is restricted to Rs. \_\_\_\_\_/- (Rupees \_\_\_\_\_ Only). Our guarantee shall remain in force until unless a suit action to enforce a claim under guarantee is filed against us within six months from (which is date of expiry of guarantee) all your rights under the said guarantee shall be forfeited and we shall be relieved and discharged from all liabilities there under.

We have power to issue this guarantee in your favour under Memorandum and Articles of Association of our Bank and the undersigned has full power to do under the power of Attorney dated.

Notwithstanding anything contained herein:

- A. Our liability under this guarantee shall not exceed Rs \_\_\_\_\_ (in words)
- B. This bank guarantee shall be valid up to \_\_\_\_\_ & unless a suit for action to enforce a claim under guarantee is filed against us within six months from the date of expiry of guarantee. All your rights under the said guarantee shall be forfeited and we shall be relieved and discharged from all liabilities there after i.e. after six months from the date of expiry of this Bank guarantee
- C. We are liable to pay the guaranteed amount or any parts thereof under this bank guarantee only and only if you serve upon us a written claim or demand or before \_\_\_\_\_
- D. The Bank guarantee will expire on (Min 37 months from the date of successful installations of the items in the order) \_\_\_\_\_

Granted by the Bank

Yours faithfully,

For (Name of Bank)

SEAL OF THE BANK

Authorised Signatory

**ANNEXURE E – BID ACCEPTANCE LETTER**

(To be submitted on Company Letter Head).

Reference: Tender no. CDACH/PUR/26/INTERIOR-HWP

Date:

To:

Centre for Development of Advanced Computing  
Plot No. 6 & 7, Hardware Park,  
Srisaïlam Highway,  
Hyderabad - 501510

Subject: Bid Acceptance Letter

Dear Sir,

1. I / We have downloaded / obtained the bid document(s) for the above mentioned 'Bid' from the web site(s) namely: [www.cdac.in](http://www.cdac.in) / [www.eprocure.gov.in](http://www.eprocure.gov.in) etc.; as per your NIT, given in the above-mentioned website(s).
2. I / We hereby certify that I / We have read the entire terms and conditions of the bid documents from Page No. (including all documents like annexure(s), schedules(s), etc.), which form part of the contract agreement and I / We shall abide hereby by the terms / conditions/ clauses contained therein.
3. The corrigendum(s) issued from time to time by your department / organization too has also been taken into consideration, while submitting this acceptance letter.
4. I / We hereby unconditionally accept the bid conditions of above-mentioned bid document(s) / corrigendum(s) in its totality / entirety.
5. I / We certify that all information furnished by our Firm is true & correct and, in the event, that the information is found to be incorrect/untrue or found violated, then your department/ organization shall without giving any notice or reason therefore or summarily reject the bid or terminate the contract, without prejudice to any other rights or remedy including the forfeiture of the fully said earnest money deposit absolutely.

Yours Faithfully,

Authorized Signatory.

(Signature of the Bidder, with Official Seal) Email id for correspondence.

ANNEXURE G – TEMPLATE FOR CONFORMITY TO SCHEDULE OF REQUIREMENTS

Sl.No	Work Description	Item Description	UOM	Qty	Conformity Y/N
1	Insulation Works	<b>UNDER DECK INSULATION:</b> Providing and Fixing under deck insulation using 19mm XLPE Foam with chemical Adhesive including cost and conveyance of all materials to site, tools and plants, labour charges, leads, lifts, scaffolding, curing and all other incidental and operational charges etc.,complete for finished item of work.	Sft	2500	
2	Interior Works	<b>SOLID PARTITION:</b> Providing and fixing of SOLID PARTITIONS of 68mm : Made out of 2"x1" aluminium anodised section( ISI reputed brands) frame 2'-0" c/c both ways, covered with 09 mm thick interior grade plain Medium Density Fibre Board. All provisions to be made for all electrical, networking boxes onto partition framework at required heights/levels with necessary additional supports as directed.	Sft	250	
3	Interior Works	<b>POLYSTER WOOL:</b> Providing and fixing Polyester Wool Insulation composed of Poly fibers, thermally bonded(no Chemical is used) with following specifications, Density UPTO 500 Gsm/sq.m, thermal conductivity at 25 Deg C 1000 Gsm 50mm thk-0.023W/Mk 1S3346-1980 mean temperature, fire retardency test 0(ZER) Guidelines of ASTM D 635, Fungi Resistance(do not promote fungi growth), noise Reduction Coefficient: 0.65 NRC, Standard Compliance : ASTM D635, IS3346-1980.	Sft	250	

4	Interior Works	<b>ALUMINIUM SKIRTING:</b> Providing & fixing of 50mm high aluminium skirting as per sample approved including necessary wastage, hardware, fixtures, base completed as per details given in drawing/Architect instruction. The profile has a 20 micron (average) anodized finish & the entire surface is supplied with a polyethylene film to protect against abrasion & stains, the film is removed at the time of handover.	Rmt	50	
5	Interior Works	<b>GLASS PARTITION:</b> Providing and Fixing 12 mm thick glass full height glass .The works includes fixing of glass with Top & Bottom surfaces with proper support/frame. Including silicon sealant filling between glass joints. Glass Make : Saint Gobain/Taiton/Bottomline/Equivalent as approved by Architect	Sft	300	
6	Interior Works	<b>TOUGHEN GLASS DOOR :</b> Providing & fixing 12 mm thick toughened glass Doors with reputed make floor spring,Parch fitting, S.S. Handle 12" long, Door Lock, Door stopper, and all fittings, hardware(Dorma/Ozone/Godrej) etc. complete in all respect.	No's	6	
7	Interior Works	<b>WALL/COLUMN PANELLING:</b> Fabricating and fixing wall/column paneling to consist Aluminum Sections at spacing not exceeding 600mm bothways (horizontal and vertical). Paneling framework to be secured to wall surface/column surface. Paneling framework to be clad on one side with 12mm thick commercial ply finished with 1.0mm thk laminate including skirting of 100mm high & 12mm x 12mm groove at skirting level.	Sft	380	
8	Interior Works	<b>WINDOW PANELLING:</b> Fabricating and fixing wall/column paneling to Metal Sections at spacing not exceeding 600mm bothways (horizontal and vertical). Paneling framework to be secured to wall	Sft	280	

		surface. Paneling framework to be clad on one side with 12mm thick cement board/ calciup silicate boards, finished with painting.			
9	Interior Works	<p><b>ACOUSTIC WALL PANELLING:</b> The wall panels shall be made of high-grade PVC, ensuring durability, lightweight construction, and resistance to moisture, corrosion, and impact. The material shall be suitable for installation in high-humidity areas such as bathrooms, kitchens, and commercial interiors. The panels shall be fire-retardant and environmentally responsible, providing a sustainable solution for modern interiors. The panels shall feature 3D louvers or fluted designs that provide an elegant, contemporary appearance while adding depth and texture to interior walls. The finish shall be scratch-resistant, fade-resistant, and easy to maintain, ensuring longevity in high-traffic areas. The panels shall offer excellent acoustic performance with a Noise Reduction Coefficient (NRC) of 0.9, making them suitable for offices, hotels, restaurants, and residential spaces requiring enhanced sound absorption and improved acoustic comfort.</p> <p>The installation shall be lightweight, hassle-free, and suitable for screw mounting on prepared wall surfaces. Panels shall be easy to cut and customize to fit various layouts without specialized tools. The smooth, non-porous surface shall be stain-resistant and easily cleaned with a damp cloth.</p> <p>The installed system as per manufacturer's specification as per direction of Engineer-in-Charge. ( Make: Anutone, Earcons Acoustic, Top Akoustic, Plantex)</p>	Sft	1250	

10	Interior Works	<p><b>BAFFLE CEILING SYSTEM:</b> Providing Baffle Ceiling System (100x25mm) To Supply vertical Linear Baffle Ceiling system , exhibiting space-delineating characteristics. The system comprises baffles 25mm wide &amp; 100mm Deep, installed at 150mm C/C distance with 0.5 mm thick made of G I sheet having galvanizing of 100 gms/sqm (both sides inclusive) and electro statically polyester powder coated of thickness 60 microns (minimum),including factory painted after bend. with Jotun Anti-microbial 60-micron powder coating activity using Test Based on MOD ISO 22196:2011. Powder coating test result should pass, Pencil hardness ASTM D3363-05, Scratch resistance ISO 1518-1/ SIS 83 91 17, Impact resistance ASTM D2794, Resistance to neutral salt spray ASTM B117, Resistance to humid atmospheres ISO 6270-2, Adhesion ISO 2409, Expected durability of the antimicrobial effect: 25+ years according to an accelerated test. The carrier rails run perpendicular to the baffles. Individual baffle lengths between 300 and 2400 mm can be selected. Baffle ceiling are supplied with the end cap matching the similar finish of baffle. Substructure Vertical baffle system consisting of L shaped galvanized slotted carriers installed perpendicularly to baffles hanging carrier at maximum 1200mm centers using cross connectors. The primary profiles must be connected to one another with longitudinal splice connectors. The entire ceiling module shall be suspended with 6mm diameter galvanized steel threaded rods from the true ceiling officially approved anchor fasteners maximum at 1200mm Centres a. RAL Finish Powder Coated (NSAMET/SEPA/LINDER)</p>	Sft	200
----	----------------	--	-----	-----

11	Interior Works	<p>GYPSUM CEILING -Providing and fixing at all height false ceiling of 12.5 mm thick tapered edge gypsum board conforming to IS: 2095 including providing and fixing of frame work made of special sections power pressed from M.S. sheet and galvanized in accordance with zinc coating 600 as per IS: 277 and consisting of angle cleats of size 25 mm wide X 15 mm thick with flanges of 22 mm and 37 mm at 1200 mm centre to centre one flange fixed to the ceiling with dash fastner 12.5 mm dia X 40 mm long with 6 mm dia. Bolts to the angle hangers of 25 X 25 X 5 mm of required length, and other end of angle hanger being fixed with nuts and bolts to 6.1 channels 45 mm X 15 mm X 0.9 mm running at the rate of 1200 mm centre to centre to which the ceiling section 0.5 mm thick bottom wedge of 80 mm with tapered flanges of 26 mm each having clips of 10.5 mm at 450 mm centre to centre shall be fixed in a direction perpendicular to 6.1 channel with connecting clips made out of 2.64 mm dia. X 230 mm long 6.1 mm wire at every junction including fixing the gypsum board with ceiling section and perimeter channels 0.5 mm thick 27 mm high having flanges of 20 mm and 30 mm long, the perimeter of ceiling fixed to wall/partition with the help of rawl plugs at 450 mm centre to centre with 25 mm long drive – all screws @ 230 mm interval including joining and fixing to a flush finish of tapered and square edges of the gypsum board with recommended filler, paper tapes, finished and two coats of primer suitable for gypsum board as per manufacturers specification and also including the cost of making openings for light fittings, grills, diffusers, cut outs made with frame of perimeter channels suitably fixed finishing of all joints neatly</p>	Sft	450	
----	----------------	--	-----	-----	--

		<p>to proper line &amp; level including providing of additional framework for electricals fixtures.including giving trap doors where ever required. Diffusers,cutouts for fire sprinklers etc. as per the specifications approved by architects Including necessary scaffolding supports, suspenders etc. All complete as per drawing.</p>			
--	--	--	--	--	--

12	Interior Works	<p>GRID FALSE CEILING(METAL TILES): Providing and fixing tiled false ceiling of GI Metal Ceiling Lay in perforated Tegular edge global white color tiles of size 595x595 mm and 0.5 mm thick with 8 mm drop(Armstrong/Saint Gobin India Gypsum/USB Boral/Hunter Douglass/Pre Approved Brand); made of GI sheet having galvanizing of 100 gms/sqm (both sides inclusive) and 20% perforation area with 1.8 mm dia holes and having NRC (Noise Reduction Coefficient ) of 0.5, electro statically polyester powder coated of thickness 60 microns (minimum), including factory painted after bending and perforation, and backed with a black Glass fiber acoustical fleece, suspended on inter locking metal grid of hot dipped galvanized steel sections ( galvanized @ 120 grams/ sqm, both side inclusive) consisting of main “T” runner with suitably spaced joints to get required length and of size 24x38 mm made from 0.30 mm thick (minimum) sheet, spaced at 1200 mm center to center and cross “T” of size 24x25 mm made of 0.30 mm thick (minimum) sheet, 1200 mm long spaced between main “T” at 600 mm center to center to form a grid of 1200x600 mm and secondary cross “T” of length 600 mm and size 24x25 mm made of 0.30 mm thick (minimum) sheet to be interlocked at middle of the 1200x600 mm panel to form grids of 600x600 mm and wall angle of size 24x24x0.3 mm and laying false ceiling tiles of approved texture in the grid including, required cutting/making, opening for services like diffusers, grills, light fittings, fixtures, smoke detectors etc. Main “T” runners to be suspended from ceiling using GI slotted cleats of size 27 x 37 x 25 x1.6 mm fixed to ceiling with 12.5 mm dia and 50 mm long dash</p>	Sft	2500	
----	----------------	--	-----	------	--

		fasteners, 4 mm GI adjustable rods with galvanised butterfly level clips of size 85 x 30 x 0.8 mm spaced at 1200 mm center to center along main T, bottom exposed width of 24 mm of all T-sections shall be pre-painted with polyester paint, all complete for all heights as per specifications, drawings and as directed by Engineer-in-charge.			
13	Interior Works	FRAME & SHUTTER STORAGE: Providing and fixing storage shutter on existing RCC storage. Made with 19 mm thick MR grade commercial ply finished both side with 1 mm thick laminate including hardware ie hinges, handle, lock etc. complete with require frame for shutter. Make:- Greenply/Archid/Kitply or equivalent	Sft	480	

14	Interior Works	<p><b>PLASTIC EMULSION PAINT:</b> Providing and applying plastic emulsion paint for finish to walls, blocked partitions, and plasterboard, ceiling, etc of approved shade, texture. No cornices grooves pattas shall be measures separately. Only plane surface shall be considered for measurement . All works to be carried out as per manufacturers specification and guide lines.The surface of wall or ceiling to be painted shall be prepared to the satisfaction of the Architect, and shall be applied with two coats of primer, two coats of putty and touch up putty if required to achieve smooth finish. The surface shall be painted with two coats of Plastic emulsion paint . All rates inclusive of scaffoldina and tools and tackles required for the same.</p>	Sft	6500	
15	AC - High Side	Supply of Inverter type Cassette AC of 2.0 TR Capacity and 3 Star BEE Rated, 5 in 1 convertible, Anti Corrossive Blue Fins, 5 Years PCB Warranty and 10 Years Compressor Warranty. Make: LG/ Daikin/ Blue Star/ O General	No's	6	
16	AC - High Side	Supply of Inverter type Split AC of 2.0 TR Capacity and 3 Star BEE Rated, 5 in 1 convertible, Anti Corrossive Blue Fins, 5 Years PCB Warranty and 10 Years Compressor Warranty. Make: LG/ Daikin/ Blue Star/ O General	No's	2	
17	Low Side	Installation, Testing and Commissioning of AC Unit	No's	8	
18	Low Side	Supplying & Laying extra suitable PVC Drain piping with all required material.	Mtrs	90	
19	Low Side	Supplying & Laying extra suitable Copper refrigerant piping with all required material.	Mtrs	90	
20	Low Side	Supplying & Fixing suitable MS Stand for outdoor unit	No's	8	
21	Low Side	Electrical wiring between outdoor and indoor	Mtrs	90	

22	Furniture	<p>SUPPLY AND INSTALLATION OF PENTAGON MODULAR WORK STATIONS: The modular workstation shall be of size (1500 mm (W)+1350 mm(return) × 600 mm (D) × 750 mm (H) and shall consist of a sturdy CRCA steel frame with ergonomically designed work surface. The tabletop shall be made of 25 mm thick pre-laminated particle board of E2 grade conforming to IS 12823:1990, finished with 2 mm thick PVC edge banding (Rehau or equivalent) on all exposed edges.</p> <p>The supporting structure shall be fabricated from CRCA steel tubular sections comprising 60 × 40 × 1.2 mm thick horizontal members and 50 × 50 × 1.0 mm thick vertical members conforming to IS 1239:2004. All metal components shall be manufactured from 0.8 mm to 1.5 mm thick CRCA steel sheets conforming to IS 513:2008. The complete metal framework shall be treated and finished with electrostatic polyester powder coating of 60–70 microns thickness in approved shades such as Munsell Grey, Graphite Grey, or White.</p> <p>The workstation shall be provided with front and side privacy screen panels made of upholstered fabric-finished panels securely fixed to the structure. An integrated cable management system shall be provided below the worktop, comprising vertical cable ducts, horizontal cable trays/raceways, and a 2-way operable metal access flap (flip-up box) fabricated from 1.2 mm thick CRCA sheet mounted on the tabletop for convenient access to electrical and data points.</p> <p>The workstation shall also include adjustable nylon/PVC glides with height adjustment up to 15 mm to accommodate</p>	No's	24
----	-----------	--	------	----

		<p>uneven flooring conditions. The complete workstation system shall be modular, sturdy, durable, aesthetically finished, and suitable for institutional/office use, complete in all respects.</p> <p>Approved Makes: Nilkamal / Featherlite / Godrej / Geeken.</p>			
--	--	---	--	--	--

23	Furniture	<p>SUPPLY AND INSTALLATION OF LINEAR MODULAR WORK STATIONS: The modular workstation shall be of size 1200 mm (W) × 600 mm (D) × 750 mm (H) and shall consist of a sturdy CRCA steel frame with ergonomically designed work surface. The tabletop shall be made of 25 mm thick pre-laminated particle board of E2 grade conforming to IS 12823:1990, finished with 2 mm thick PVC edge banding (Rehau or equivalent) on all exposed edges.</p> <p>The supporting structure shall be fabricated from CRCA steel tubular sections comprising 60 × 40 × 1.2 mm thick horizontal members and 50 × 50 × 1.0 mm thick vertical members conforming to IS 1239:2004. All metal components shall be manufactured from 0.8 mm to 1.5 mm thick CRCA steel sheets conforming to IS 513:2008. The complete metal framework shall be treated and finished with electrostatic polyester powder coating of 60–70 microns thickness in approved shades such as Munsell Grey, Graphite Grey, or White.</p> <p>The workstation shall be provided with front and side privacy screen panels made of upholstered fabric-finished panels securely fixed to the structure. An integrated cable management system shall be provided below the worktop, comprising vertical cable ducts, horizontal cable trays/raceways, and a 2-way operable metal access flap (flip-up box) fabricated from 1.2 mm thick CRCA sheet mounted on the tabletop for convenient access to electrical and data points.</p> <p>The workstation shall also include adjustable nylon/PVC glides with height adjustment up to 15 mm to accommodate</p>	No's	72
----	-----------	---	------	----

		<p>uneven flooring conditions. The complete workstation system shall be modular, sturdy, durable, aesthetically finished, and suitable for institutional/office use, complete in all respects.</p> <p>Approved Makes: Nilkamal / Featherlite / Godrej / Geeken.</p>			
24	Furniture	Providing and Fixing Conference Table of Size L 2400 X W 900 mm Made up of 25mm PLPB Top with powder coated M S Understructure with electrical and networking provisions.	No's	1	
25	Furniture	Providing and Fixing Conference Table of Size L 1800 X W 900 mm Made up of 25mm PLPB Top with powder coated M S Understructure with electrical and networking provisions.	No's	1	

26	Chairs	<p><b>MID BACK OFFICE CHAIR:</b> Supply and installation of mid-back ergonomic office chairs with a centre tilt synchro mechanism enabling smooth reclining and upright positioning for enhanced comfort during extended working hours. The chair shall feature a breathable mesh backrest for proper ventilation and 3D adjustable armrests with PU padding, allowing flexible positioning as per user requirements. The seating system shall be equipped with a 100 mm gas lift mechanism for precise height adjustment. The base shall be made of high-strength nylon in a five-star configuration to ensure durability and stability, fitted with 50 mm twin wheel nylon castors for smooth and scratch-free mobility. The overall chair dimensions shall be approximately 720 mm (W) × 720 mm (D) × 1090 mm (H), with a seating height of up to 560 mm. The chair shall conform to relevant BIFMA standards and be supplied in approved colour and finish. Approved makes shall include Godrej Interio, Nilkamal, Featherlite, or Geeken, or equivalent.</p>	No's	108	
<b>ELECTRIFICATION AND NETWORKING</b>					
27	Point Wiring	<p>Providing wiring ( supply, fixing, testing and comm. etc) for light point / Exhaust fan point / Call bell point/6A Switch point etc with 2x1.5+1X1.5 sq mm FRLS PVC insulated copper conductor single core multi stranded wire and 1.5 sqmm PVC insulated copper earth wire with 25sqmm conduit.</p>	No's	35	
28	Point Wiring	<p>Providing and fixing Secondray light point (Maximum three points to be looped from primary) With 25sqmm conduit.</p>	No's	25	
29	Raw Power Points	<p>Providing wiring ( supply, fixing, testing and comm. etc) for 6A Switch-Socket Point etc with 2x1.5+1X1.5 sq mm FRLS PVC insulated copper conductor single core multi stranded wire and 1.5 sqmm</p>	No's	12	

		PVC insulated copper earth wire with 25sqmm conduit.Make-ANCHOR ROMA /RR (MAT FINISH)			
30	Raw Power Points	Supply, fixing, testing and commissioning of 1 No 16 A switch & 1 No. six pin 6/16 Amp. Multi Socket ( Modular Type ) with cover plate , sheet steel box etc on surface / concealed manner I/c electrical wiring with 2 X2.5 sqmm + 1 X 2.5 sqmm FRLS PVC insulated copper conductor with 25sqmm pvc conduit.Make-ANCHOR ROMA /RR (MAT FINISH)	No's	<b>10</b>	
31	AC Power Points	Supply, Installation, Testing and commissioning of the surface / recess mounting distribution board with 32A SWITCH And Socket ncl. wiring with 2 X 4.0 sq mm + 1 X 2.5sqmm PVC insulated copper conductor with 25mm pvc conduit. Make-ANCHOR ROMA /RR (MAT FINISH)	No's	<b>8</b>	
32	Circuit Wiring	Supply and laying of copper flexible wire 2x2.5+1X2.5 sq mm FRLS PVC insulated copper conductor single core multi stranded wire.	Rmt	<b>380</b>	
33	Circuit Wiring	Supply and laying of copper flexible wire 2x4+1X2.5 sq mm FRLS PVC insulated copper conductor single core multi stranded wire.	Rmt	<b>160</b>	
34	Distribution Boards	Supply, Installation, Testing and commissioning of the surface / recess mounting following way ETPN MCB Single phase distribution board for Three phase outgoing with IP 42 protection , direct on wall incl. the followings accessories. Make-LEGRAND / SCHINDLER / SIEMENS	No's	<b>2</b>	
		INCOMER			
		63A TPN MCB- 1 NO. C Curve			
		OUTGOINGS			
		32A TPN MCB 2 NO.			
		40A DP MCB 2 NO.			

		SET AS ABOVE			
35	Distribution Boards	POWER DISTRIBUTION BOARD	No's	<b>2</b>	
		Supply, Installation, Testing and commissioning of the surface / recess mounting following way TPN MCB three phase distribution board for single phase outgoing with IP 42 protection , direct on wall incl. the followings accessories. Make-LEGRAND / SCHINDLER / SIEMENS			
		INCOMER			
		32A TPN MCB 1 NO. C Curve			
		OUTGOINGS			
		6A SPMCB 9 NO.			
		16A SPMCB 9 NO			
		SET AS ABOVE			
36	Distribution Boards	U.P.S. DISTRIBUTION BOARD	No's	<b>2</b>	
		Supply, Installation, Testing and commissioning of the surface / recess mounting following way Double door MCB D.B.- Single phase distribution board ( Consumer unit ) for single phase out going with IP 42 protection incl. the followings accessories – incl. Electrical connection ,earthing, making good all the damages, painting, cleaning the site, etc complete as per site requirement and as directed. Make-LEGRAND / SCHINDLER / SIEMENS			
		INCOMER			
		40A DP MCB 1 NO.			
		OUTGOINGS			
		16/25A SPMCB 10 NO.			
		SET AS ABOVE			
37	UPS Power Point	SPECIAL POINTS: ( UPS)	No's	<b>2</b>	
		Supply, fixing, testing and commissioning of following Modular type switch socket with cover plate , sheet steel box etc on surface / concealed manner I/c electrical			

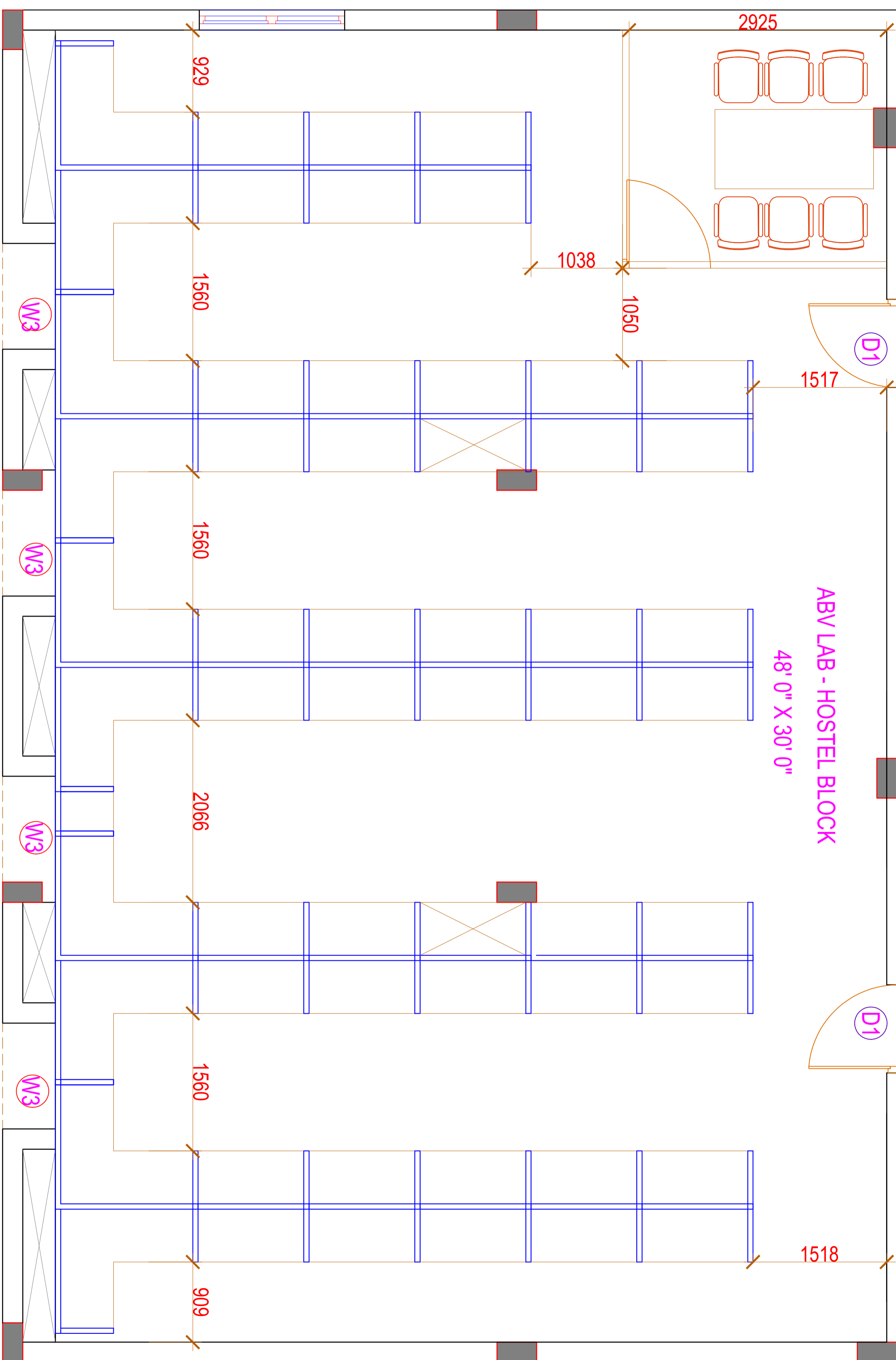
		wiring with 2 X 2.5 sq mm + 1 X 2.5 sq mm FRLS PVC insulated copper conductor single core multi stranded wire in rigid 25MM PVC conduit			
		2 Nos. 16 A Switch + 3 Nos. 6 A, 5 pin Socket.			
38	Data Points	COMPUTER POINT : I / O's :	No's	<b>115</b>	
		Single outlet with shutter modular type I / O's Outlets ( RJ – 45 ) with suitable size PVC modular boxes complete as required. Make-D-LINK			
39	Telephone Points	TELEPHONE POINT :	No's	<b>10</b>	
		Single outlet with shutter modular type Telephone Outlets ( RJ – 11 ) with suitable size PVC modular boxes complete as required. Make-D-LINK			
40	Data Works	Providing & Laying of Cat - 6A+ for Data / Voice wire through Alu. Channel / PVC Pipe - D Link Make	Rmt	<b>2900</b>	
41	Data Works	Supply and Installation of following factory fabricated patch cords ( UTP-CAT 6 ) complete with connectors and boots on both sides- Two Meter length	No's	<b>110</b>	
42	Data Works	Supply and Installation of 24-Port Cat6 Unshielded Wallmount or Rackmount Patch Panel,	No's	<b>6</b>	
43	Data Works	Supply and Installation of Patch cord cat6 1 metre B/Y Color	No's	<b>110</b>	
44	Data Works	Supply and Installation of 22 U rack with exhaust fan	No's	<b>1</b>	
45	Attendance Device	Cloud-Based Biometric Attendance Device   Fingerprint + Card + Wi-Fi + Battery Backup   Office Attendance Machine	No's	<b>2</b>	
46	Main Cabling	L.T.CABLES :			
		Supply, laying ,testing and commissioning of the following 1100 volt grade pvc insulated Al / Cu. Conductor armored cable inner and outer sheathed , along with the two run of G.I.earth wire i/c termination with brass gland and Al. lugs etc. complete as required.			

		3.5CX 25 SQMM Aluminium armoured cable	Rmt	<b>100</b>	
		3CX 6 SQMM Copper Flexible cable	Rmt	<b>100</b>	
47	Light Fixtures	<b>LED FIXTURES:</b> 40 W, 2 X 2 Light Fixture - Philips, Crompton, Havells or Wipro	No's	<b>35</b>	
48	Light Fixtures	<b>LED FIXTURES:</b> 20 W, Minimum 80 lumens/ Watt LED ROUND DOWN LIGHTER - Philips, Crompton, Havells or Wipro	No's	<b>10</b>	
49	Light Fixtures	<b>LED BATTEN:</b> 1 x 20W LED tube fixtures with integrated driver unit. Complete assembly with 3 years unconditional replacement warranty.	No's	<b>10</b>	
50	Wall Fans	<b>WALL BRACKET FAN:</b> Supply and fixing of the following fans Wall bracket fan white- 400 mm - Crompton/ Havells/ Bajaj	No's	<b>5</b>	
51	Exhaust Fans	<b>EXHAUST FAN:</b> Supply and fixing of the following single phase 300 dia Exhaust fans - Crompton/ Havells/ Bajaj	No's	<b>5</b>	
52	PVC Trench	Providing & Fixing of 2" x 2" PVC Cassing Patti. ( 60 x 45 mm Pvc Trench )	Rmt	<b>150</b>	
53	CCTV System	2 MP Full HD IR Dome Day & Night vision indoor Camera, Hikvision / CP plus / Sony/ MI make	No's	<b>12</b>	
54	CCTV System	Standalone 32 Channel 4K NVR, 2 TB x 2 surveillance hard disk,CIF Real-Time, 2 SATA interface, LAN, VGA	No's	<b>1</b>	
55	CCTV System	Hard Disk - 4TB	No's	<b>1</b>	
56	CCTV System	RJ 45 Connector	No's	<b>24</b>	
57	CCTV System	8 port Network POE Switch	No's	<b>1</b>	
58	CCTV System	Monitor P& F Monitor Screen 19.5"	No's	<b>1</b>	

**Annexure H**

**Tender No.: CDACH/PUR/26/INTERIOR-HWP**

<b>Sr. No.</b>	<b>Information heading</b>	<b>Details</b>
1	Name of the Vendor	
2	Name of the person(s) to whom, all references shall be made, regarding this TENDER/PROJECT (Authorized Signatory)	
3	Address of the Contact Person	
4	Designation of the Contact Person	
5	Telephone number(s) of the Contact Person.	
6	Mobile number of the Contact Person	
7	Fax number of the Contact Person	
8	Email ID(s) of the Contact Person	
9	Annual Turnover (in Lakhs): Last two Years (In INR)	1 2
10	Years of Operation (in Years):	
11	PAN Number	
12	GSTIN/SAC Nos.	
13	Make / Models offered	



2925

929

1560

1560

2066

1560

909

1038

1050

1517

1518

ABV LAB - HOSTEL BLOCK  
48' 0" X 30' 0"

W3

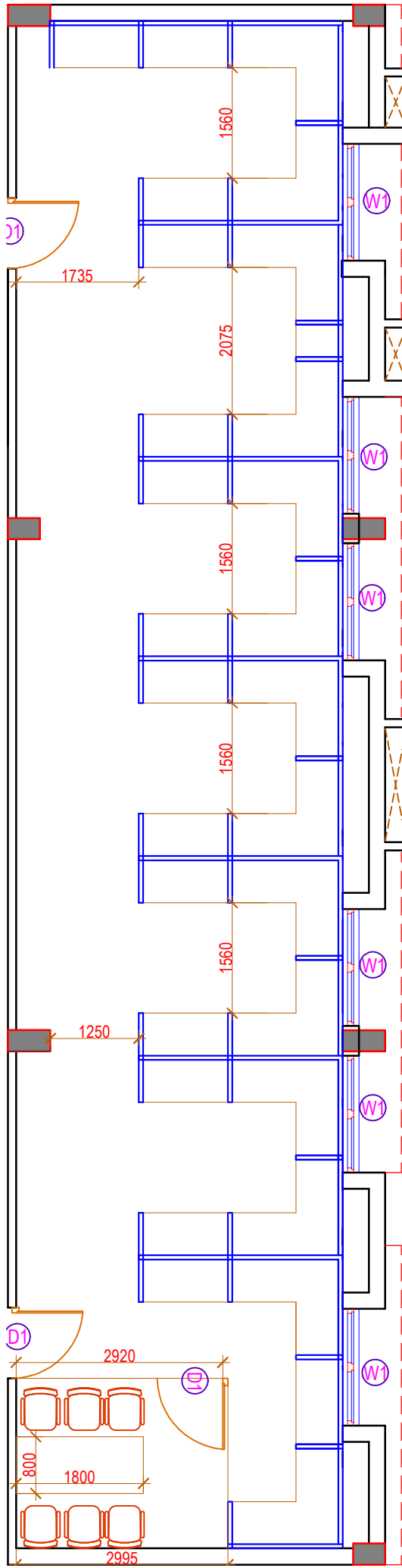
W3

W3

W3

D1

D1



**Annexure – I: Bank Details for NEFT**

**Electro fund transfer system  
To make payments through debit clearing**

1. Name of the Firm:	Centre for Development of Advanced Computing (C-DAC)
2. Name of the Supplier	Centre for Development of Advanced Computing (C-DAC)
3. Particulars of Bank Account	
(a) Bank's Name	Bank of India
(b) Branch Name	Shamshabad, Hyderabad
(c) 9 - digit code number of the bank & branch appearing on the micro cheque issued by the bank	500013041
(d) Account type with code	Savings Account
(e) Ledger No. / Ledger folio No	N/A
(f) Account Number	566310110004393
(g) IFSC Number	BKID0005663
4. Date of effect	January, 2015

I, hereby declare that the particulars given above are correct and complete. If the transaction is delayed or not effected at all for reasons for incomplete or incorrect information, I would not hold the user institution responsible. I have read the option invitation later and agree to discharge the responsibility expected of me as a participant under the scheme.

*Sudhakar*

(SIGNATURE OF THE CUSTOMER)

Certified that the particulars furnished above are correct as per our records.

Bank's Stamp

Date: 13.03.2015

बैंक ऑफ इंडिया/For BANK OF INDIA

*17298*  
सहायक प्रबंधक/Asst. Manager  
शमशाबाद शाखा/Shamshabad Br.

SIGNATURE OF THE AUTHORISED / OFFICE FROM THE BANK

**ANNEXURE J – DOCUMENTS CHECK-LIST**

Sl. No	Document Page Numbers	Yes/No
e-Packet – A		
1	Covering Letter (Annexure-A)	
2	Authority Letter (Annexure-B)	
3	Transaction details towards online payment of EMD	
4	Documents check list (Annexure H)	
5	A self-attested copy of Partnership deed /Memorandum and Articles of Association as applicable.	
6	Self-attested copies of GST registration certificate, as applicable.	
7	A self-attested copy of PAN card, if applicable	
8	Self-certified copy of Balance Sheets/ Certificate from CA towards certification of turnover for last three years.	
9	Undertaking(s) from OEMs/Principal Manufacturers of the various components (Annexure- C)	
10	Bid Acceptance Letter (Annexure – E)	
11	Integrity Pact (Annexure – F)	
12	Copies of purchase orders and installation reports, as per eligibility criteria and any other documents in support of eligibility criteria	
14	Technical Bid, Documents Brochures, Catalogs, data sheets, tables etc. on the solution offered.	
16	Duly filled compliance statements and BoM Tables	
17	Benchmark Results and Tables	
18	Copy of Un-priced commercial bid along with commercial terms and conditions	
19	Conformity to Schedule of Requirements (Annexure – G)	
20	Commercial bid along with commercial terms and conditions	

**(END OF DOCUMENT)**