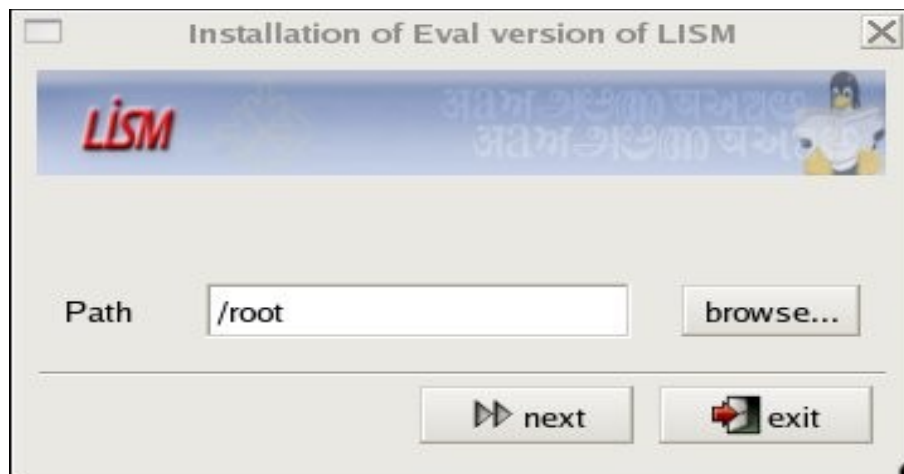


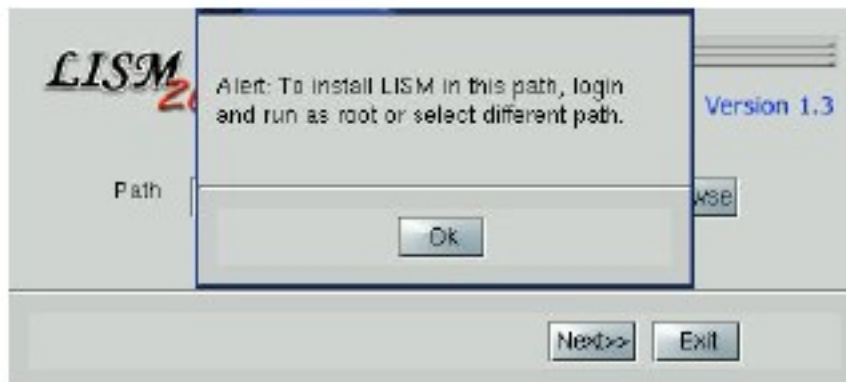
INSTALLATION INSTRUCTIONS:

- * Insert the LISM CD in CDROM.(Or Download DebianLism.tar.gz or RedHatLism.tar.gz from www.cdac.in
- * If Nautilus does not open, open Nautilus or the terminal and go to location /mnt/cdrom/.(Or Open the terminal emulator, untar & unzip the downloaded file, you will get "Lism" directory).
- * Double click on "InstallerLism" in Nautilus. (Or make "Lism" as current working directory and give the command `./InstallerLism` at shell prompt in terminal).
- * The LISM Installer will run and main window of the Installer will appear on the screen. By Default it takes your home directory to install LISM.



- * The LISM Installer will ask for the path where lism to be installed. The default path is your home directory. After selecting the path press "Next" button.
- * If you are not logged as root the installer will ask for root password for installing Indian fonts.

8. The following screen will be shown if you try to install LISM as normal user in the path that requires root privilege for creating new files. Example the path selected is /usr/bin/



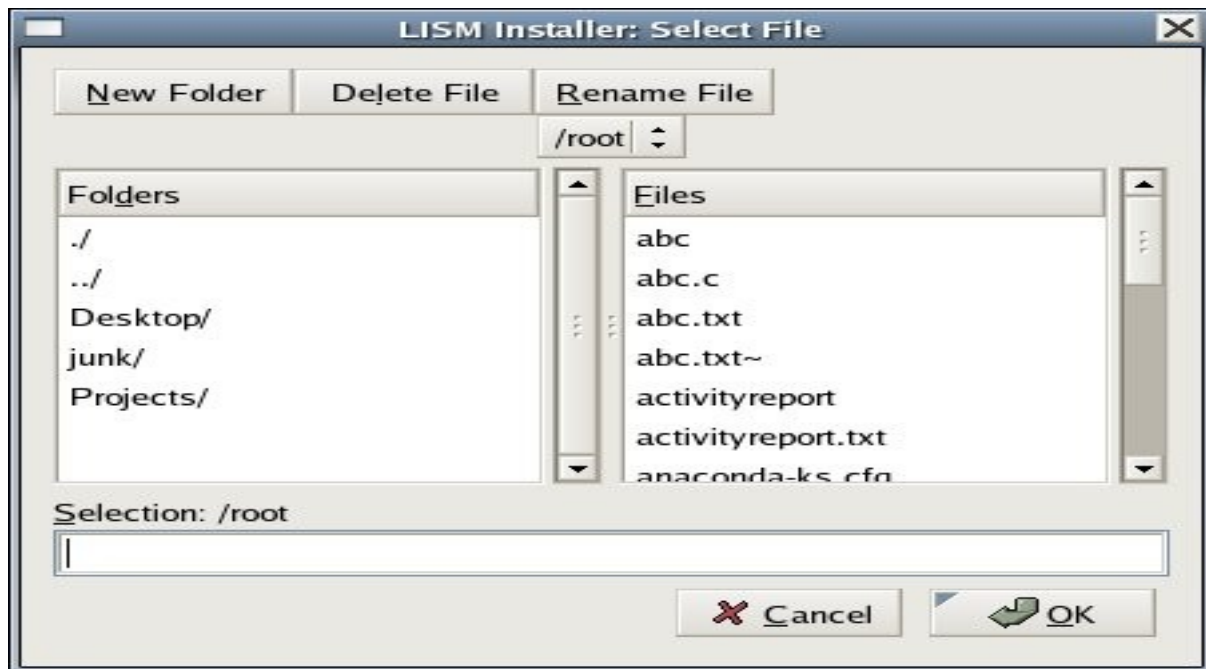
9. If you are not logged as root, the installer will ask for root password for installing Indian fonts.



10. If the password is wrong, it will prompt you to enter the root password again.



- * The installer tells the path where lism is going to be installed. Press "Next" again for installing LISM.



- * On successful installation, "Installation is complete." message will come on the installer window. Now press "Exit" to close the installer.



After installation you will get "LISM" directory in the above specified path. In the "LISM" directory you will find "Doc" directory, "lism" binary file, "UnInstallLism" binary file and "UnInstall.sh" shell script. Also, you will get desktop shortcut for lism on your desktop.

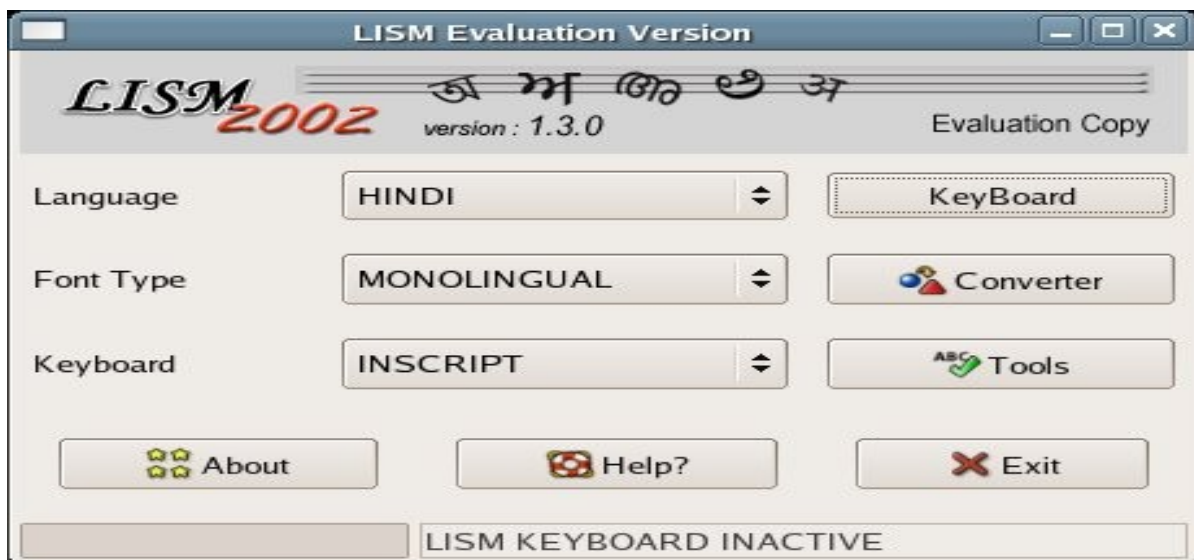
Note: If this Installer is not working properly than , Login as a root and Run that shell script manually (LismInstaller.sh). It install the LISM on “ / “ directory but there is no creation of desktop shortcuts. So, you have to open folder /LISM and run “lism” from there.

UNINSTALLATION:

- * Open Nautilus or the terminal.
- * Go to the location where "lism" is installed.
- * Double click on "UnInstallLism" in Nautilus or give the command `"/UnInstallLism` at shell prompt in terminal.
- * The Lism Uninstaller will run and it's main window will appear on the screen.
- * Click "Next" to uninstall LISM.
- * If you are not logged as root, the uninstaller will ask for root password for uninstalling fonts.
- * On successful uninstallation of LISM, "LISM is Uninstalled." message will come on the uninstaller window. Now press "Exit" to close the uninstaller.

QUICK STEP TO USE LISM:

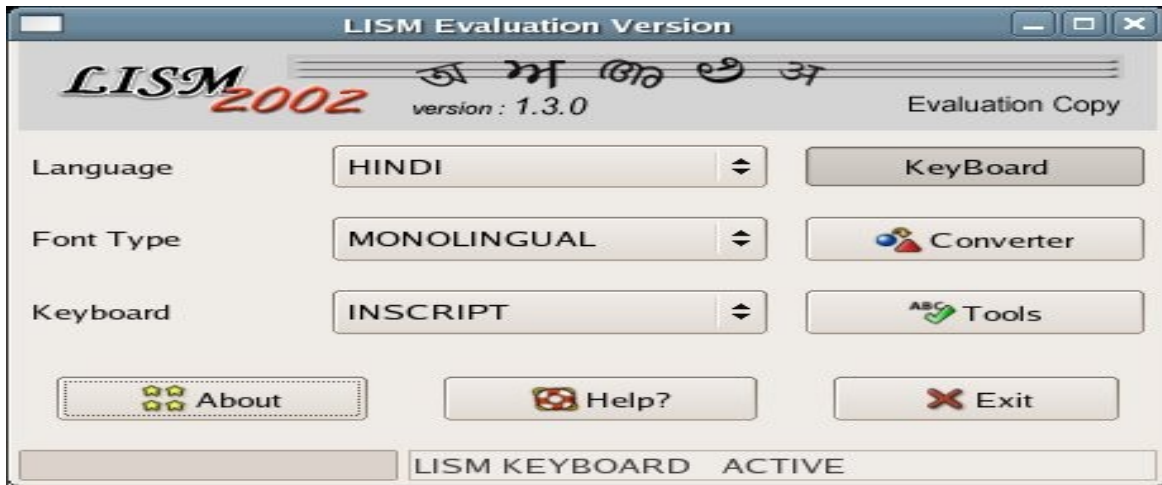
- * After installing LISM you will get "lism" in the LISM directory.
(Its recommended to run "lism" as a user rather than as a root)
- * Start the LISM by typing ./lism at the location where LISM is installed.
Or double click on the "LISM" icon on desktop.



- * Select the Language from the LISM combo box.
- * Select the Font Type from the LISM Font Type Combobox.
- * Select the keyboard layout from the LISM key board Layout Combobox.
- * Click on the Keyboard Button to start LISM keyboard.

Note: KeyBoard button is a push button.

Both start and stop operation is done by the same keyboard button.



- This is a Evaluation version . So after 20 seconds there is a Pop Up Window comes up and stop the working of lism, if you close that pop-up window it again starts the keyboard. If you want to continue your work after 20 seconds you have to close that pop up window every time it pops up.

